

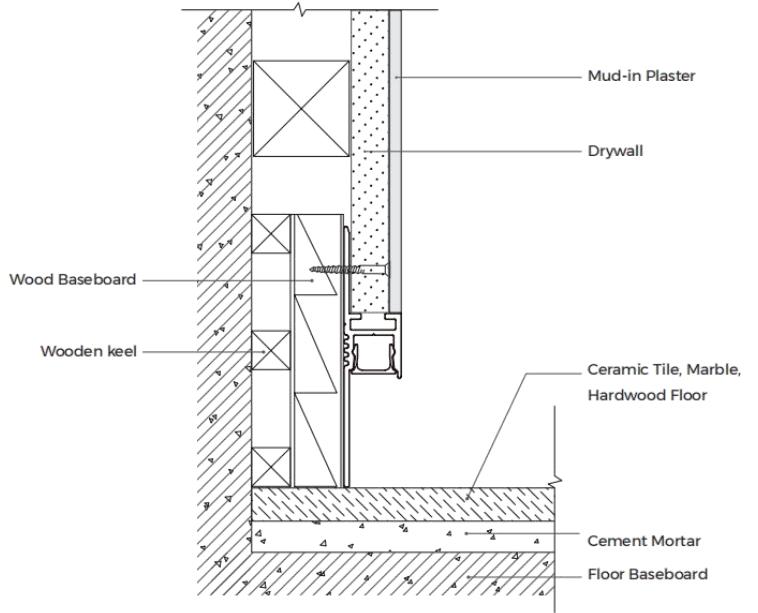
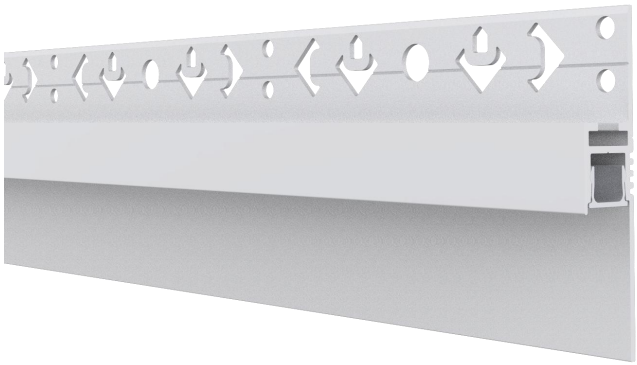
Specification

Architecture lighting integration series

SK6013(B)

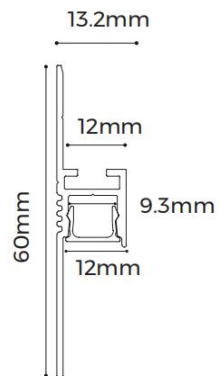


SK6013(B)





Features


- Apply to skirting board , integrated into architecture.
- Indirect lighting design integrates architectural and lighting effects.
- AL6063-T5 aluminum profile with high-quality surface treatment.



Standard Configuration

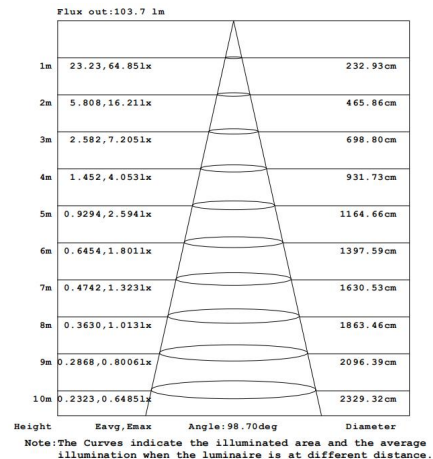
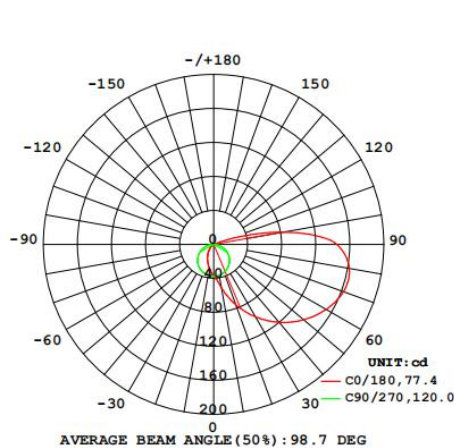
Picture	Item	Parameter
	Profile	Profile weight : 0.8kg/2.5m Size : L2500*W13.2*H60mm Material : AL6063-T5 Surface processing : Spraying RAL9003
	cover	Type: Frosted diffuser Material : PC Light transmittance : 80% Size : L2500*W10.3*H6.8mm PC Feature : The diffuser will extend (shrink) 0.8mm/m when the temperature rises (drops) 10°C.

Optional Accessories

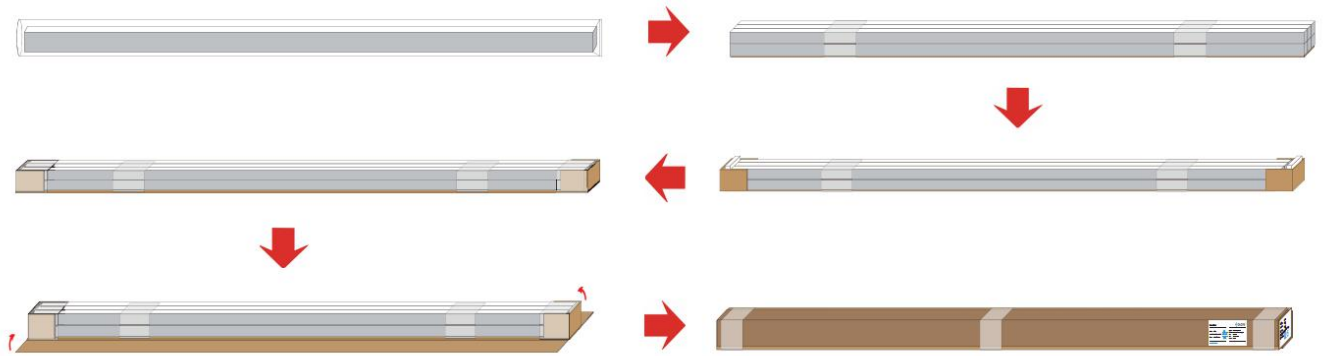
Picture	Item	Parameter
	Flexible strip D6140-24V-8mm	Material : FPC,CCT : 2700/3000/4000/6000K ; CRI > 90 ; Voltage : 24V ;Power :6.6W/m ;Lumen :710Lm/m ;Width :8mm ;Minimum cutting unit : 7LEDs/50mm ;

Optical Parameter

(D6140-24V-8mm light source, frosted diffuser)



Package



Item	Type	Size(mm)	NW(kg)	GW(kg)	Content
Profile	Packing box	2600*210*150mm	28.3	30.5	36pcs/box

