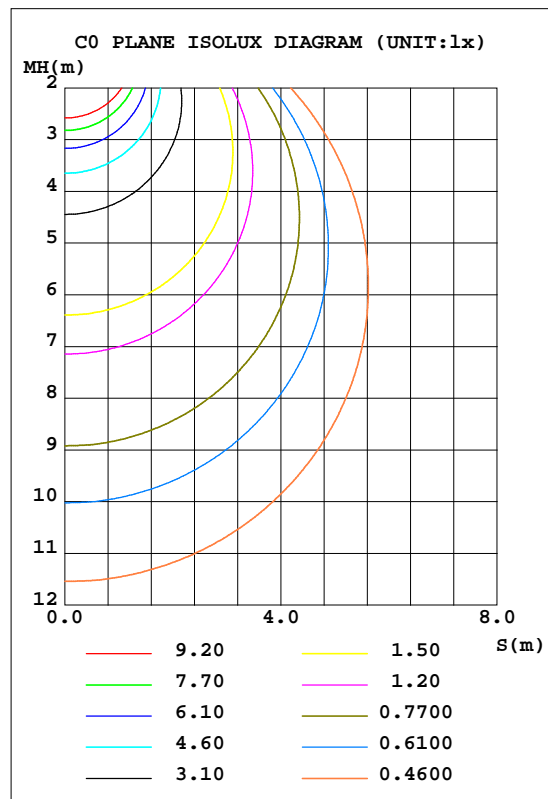
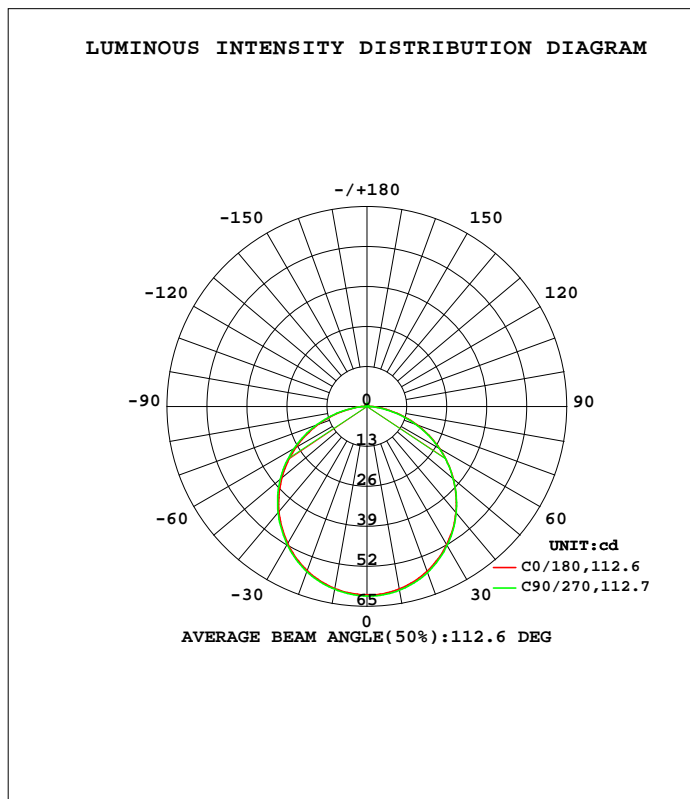


LUMINAIRE PHOTOMETRIC TEST REPORT

Test:U:24.00V I:0.7355A P:17.65W PF:1.000 Freq:0Hz Lamp Flux:181.703x1 lm		
NAME: NMT2015-NP	TYPE:	WEIGHT:
SPEC.:NMT2015-0B24CSS050CC0100-NP	DIM.: 1000*20*15mm	SERIAL No.:
MFR.: COLORS	SUR.:1000*15mm	Shielding Angle:

DATA OF LAMP		PHOTOMETRIC DATA				Eff: 10.29 lm/W
MODEL	NMT2015-NP	I _{max} (cd)	61.82	S/MH(C0/180)		1.26
NOMINAL POWER(W)	14	LOR(%)	100.0	S/MH(C90/270)		1.25
RATED VOLTAGE(V)	24	TOTAL FLUX(lm)	181.70	h UP, DN(C0-180)		1.2,48.9
NOMINAL FLUX(lm)	181.703	CIE CLASS	DIRECT	h UP, DN(C180-360)		1.2,48.7
LAMPS INSIDE	1	h up(%)	2.4	CIBSE SHR NOM		1.25
TEST VOLTAGE(V)	24	h down(%)	97.6	CIBSE SHR MAX		1.35



C Range: 0 - 360DEG
 C Interval: 45.0DEG
 Test Speed: HIGH
 Temperature:25.3DEG
 Operators:JYH
 Test Date:2021-04-15

Range: 0 - 180DEG
 Interval: 1.0DEG
 Test System:EVERFINE GO-2000A_V1 SYSTEM V2.0.362
 Humidity:65.0%
 Test Distance:10.950m [K=1.0000]
 Remarks:

ZONAL FLUX DIAGRAM

ZONAL FLUX DIAGRAM:

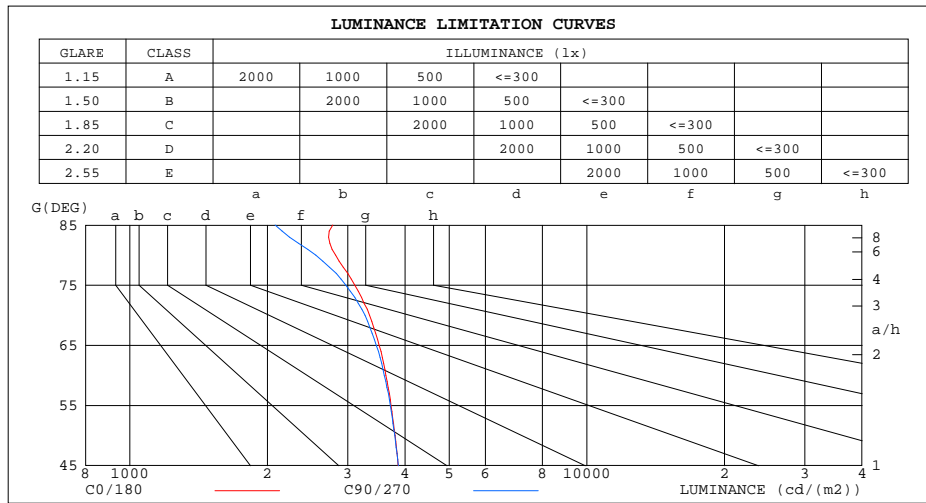
g	C0	C45	C90	C135	C180	C225	C270	C315	g	F zone	F total	%lum,lamp
10	60.27	60.65	60.68	60.72	60.10	60.23	60.40	60.60	0- 10	5.824	5.824	3.21,3.21
20	57.07	57.74	57.52	57.52	56.79	56.85	57.19	57.35	10- 20	16.68	22.51	12.4,12.4
30	51.87	52.67	52.16	52.35	51.54	51.65	51.94	52.19	20- 30	25.29	47.80	26.3,26.3
40	45.02	45.71	45.17	45.28	44.53	44.94	44.98	45.43	30- 40	30.51	78.30	43.1,43.1
50	36.69	37.35	36.62	36.82	36.13	36.58	36.85	37.23	40- 50	31.71	110.0	60.5,60.5
60	27.26	27.91	27.05	27.25	26.72	27.15	27.42	27.81	50- 60	28.75	138.8	76.4,76.4
70	17.17	17.63	16.78	16.85	16.64	16.87	17.31	17.54	60- 70	22.02	160.8	88.5,88.5
80	7.348	7.447	6.651	6.737	6.891	6.921	7.191	7.467	70- 80	12.63	173.4	95.4,95.4
90	1.444	1.348	1.023	1.166	1.344	1.270	0.9200	1.309	80- 90	3.876	177.3	97.6,97.6
100	0.6546	0.8015	0.4335	0.7813	0.6679	0.8683	0.4461	0.6947	90-100	0.9200	178.2	98.1,98.1
110	0.6746	0.7947	0.2662	0.7281	0.6813	0.8416	0.2808	0.7147	100-110	0.6575	178.9	98.4,98.4
120	0.7281	0.6553	0.4008	0.7080	0.6950	0.5950	0.4145	0.7147	110-120	0.6269	179.5	98.8,98.8
130	0.7281	0.6480	0.5277	0.6281	0.7215	0.5544	0.5277	0.5611	120-130	0.5584	180.1	99.1,99.1
140	0.7879	0.7017	0.6212	0.7214	0.7483	0.6866	0.5946	0.6276	130-140	0.5004	180.6	99.4,99.4
150	0.8550	0.7482	0.7214	0.8151	0.7748	0.7347	0.6813	0.6479	140-150	0.4523	181.0	99.6,99.6
160	0.9082	0.7883	0.8349	0.9017	0.8284	0.8283	0.8418	0.6479	150-160	0.3610	181.4	99.8,99.8
170	0.9552	0.9353	0.9552	0.9819	0.8483	0.9486	1.002	0.8349	160-170	0.2467	181.6	99.9,99.9
180	0.8884	1.062	1.062	1.069	0.8617	1.055	1.062	1.049	170-180	0.0921	181.7	100,100
DEG	LUMINOUS INTENSITY:cd									UNIT:lm		

C Range: 0 - 360DEG
 C Interval: 45.0DEG
 Test Speed: HIGH
 Temperature:25.3DEG
 Operators:JYH
 Test Date:2021-04-15

g Range: 0 - 180DEG
 Interval: 1.0DEG
 Test System:EVERFINE GO-2000A_V1 SYSTEM V2.0.362
 Humidity:65.0%
 Test Distance:10.950m [K=1.0000]
 Remarks:

LUMINANCE LIMITATION CURVES

Test:U:24.00V I:0.7355A P:17.65W PF:1.000 Freq:0Hz Lamp Flux:181.703x1 lm		
NAME: NMT2015-NP	TYPE:	WEIGHT:
SPEC.:NMT2015-0B24CSS050CC0100-NP	DIM.: 1000*20*15mm	SERIAL No.:
MFR.: COLORS	SUR.:1000*15mm	Shielding Angle:



LUMINANCE cd/(m2)		
G(DEG)	C0/180	C90/270
85	2779	2079
80	2821	2553
75	3109	2970
70	3348	3271
65	3513	3462
60	3635	3607
55	3731	3717
50	3805	3798
45	3866	3870

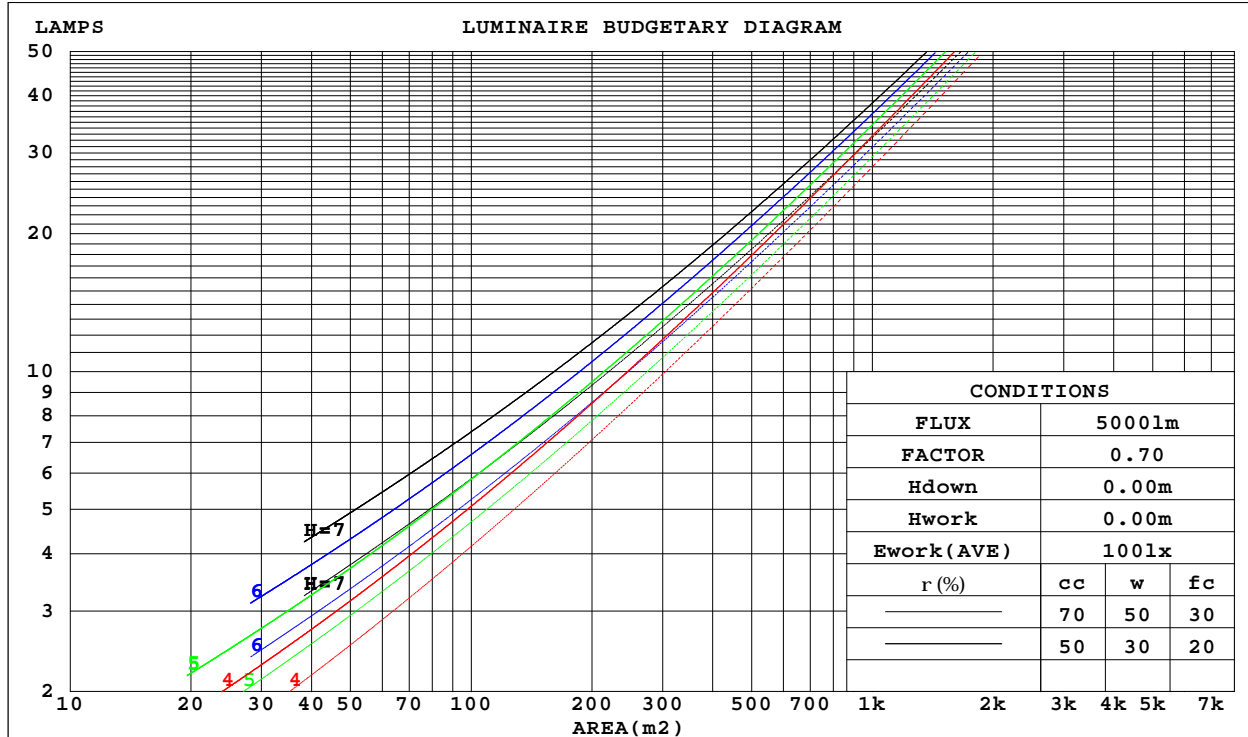
C Range: 0 - 360DEG
 C Interval: 45.0DEG
 Test Speed: HIGH
 Temperature:25.3DEG
 Operators:JYH
 Test Date:2021-04-15

G Range: 0 - 180DEG
 G Interval: 1.0DEG
 Test System:EVERFINE GO-2000A_V1 SYSTEM V2.0.362
 Humidity:65.0%
 Test Distance:10.950m [K=1.0000]
 Remarks:

CU AND LUMINAIRE BUDGETARY ESTIMATE DIAGRAM

Test:U:24.00V I:0.7355A P:17.65W PF:1.000 Freq:0Hz Lamp Flux:181.703x1 lm		
NAME: NMT2015-NP	TYPE:	WEIGHT:
SPEC.:NMT2015-0B24CSS050CC0100-NP	DIM.: 1000*20*15mm	SERIAL No.:
MFR.: COLORS	SUR.:1000*15mm	Shielding Angle:

r _{cc}	80%			70%			50%			30%			10%			0
r _w	50%	30%	10%	50%	30%	10%	50%	30%	10%	50%	30%	10%	50%	30%	10%	0
r _{fc}	20%			20%			20%			20%			20%			0
RCR	RCR:Room Cavity Ratio Coefficients of Utilization(CU)															
0.0	1.18	1.18	1.18	1.15	1.15	1.15	1.10	1.10	1.10	1.05	1.05	1.05	.00	.00	.00	.98
1.0	1.03	.99	.95	1.01	.97	.93	.96	.93	.90	.92	.89	.87	.88	.86	.84	.81
2.0	.90	.83	.77	.88	.81	.76	.84	.78	.74	.80	.76	.72	.77	.73	.70	.67
3.0	.79	.70	.64	.77	.69	.63	.74	.67	.62	.70	.65	.60	.68	.63	.59	.57
4.0	.70	.61	.54	.68	.60	.54	.65	.58	.52	.63	.57	.52	.60	.55	.51	.48
5.0	.62	.53	.46	.61	.52	.46	.58	.51	.45	.56	.50	.45	.54	.48	.44	.42
6.0	.56	.47	.40	.55	.46	.40	.53	.45	.40	.51	.44	.39	.49	.43	.39	.36
7.0	.51	.42	.36	.50	.41	.35	.48	.40	.35	.46	.40	.35	.45	.39	.34	.32
8.0	.46	.38	.32	.45	.37	.32	.44	.36	.31	.42	.36	.31	.41	.35	.31	.29
9.0	.42	.34	.29	.42	.34	.28	.40	.33	.28	.39	.33	.28	.38	.32	.28	.26
10.0	.39	.31	.26	.38	.31	.26	.37	.30	.26	.36	.30	.25	.35	.29	.25	.23



C Range: 0 - 360DEG
 C Interval: 45.0DEG
 Test Speed: HIGH
 Temperature:25.3DEG
 Operators:JYH
 Test Date:2021-04-15

Range: 0 - 180DEG
 Interval: 1.0DEG
 Test System:EVERFINE GO-2000A_V1 SYSTEM V2.0.362
 Humidity:65.0%
 Test Distance:10.950m [K=1.0000]
 Remarks:

WEC AND CCEC

Test:U:24.00V I:0.7355A P:17.65W PF:1.000 Freq:0Hz Lamp Flux:181.703x1 lm		
NAME: NMT2015-NP	TYPE:	WEIGHT:
SPEC.:NMT2015-0B24CSS050CC0100-NP	DIM.: 1000*20*15mm	SERIAL No.:
MFR.: COLORS	SUR.:1000*15mm	Shielding Angle:

rcc	80%			70%			50%			30%			10%			0
rw	50%	30%	10%	50%	30%	10%	50%	30%	10%	50%	30%	10%	50%	30%	10%	0
rfc	20%			20%			20%			20%			20%			0
RCR	RCR:Room Cavity Ratio						Wall Exitance Coefficients(WEC)									
0.0																
1.0	.313	.178	.056	.305	.174	.055	.290	.166	.053	.277	.160	.051	.264	.153	.049	
2.0	.293	.160	.049	.286	.157	.049	.273	.152	.047	.261	.146	.046	.250	.141	.045	
3.0	.270	.144	.043	.264	.142	.043	.253	.137	.042	.242	.133	.041	.232	.129	.040	
4.0	.249	.130	.038	.244	.128	.038	.234	.124	.037	.224	.120	.036	.215	.117	.036	
5.0	.230	.117	.034	.225	.116	.034	.216	.113	.033	.208	.110	.033	.200	.107	.032	
6.0	.214	.107	.031	.209	.106	.030	.201	.103	.030	.193	.100	.030	.186	.098	.029	
7.0	.199	.098	.028	.195	.097	.028	.187	.095	.027	.180	.093	.027	.174	.090	.027	
8.0	.185	.091	.025	.182	.090	.025	.175	.088	.025	.169	.086	.025	.163	.084	.024	
9.0	.174	.084	.023	.171	.083	.023	.165	.081	.023	.159	.080	.023	.154	.078	.023	
10.0	.163	.078	.022	.160	.078	.022	.155	.076	.021	.150	.074	.021	.145	.073	.021	

rcc	80%			70%			50%			30%			10%			0
rw	50%	30%	10%	50%	30%	10%	50%	30%	10%	50%	30%	10%	50%	30%	10%	0
rfc	20%			20%			20%			20%			20%			0
RCR	RCR:Room Cavity Ratio						Ceiling Cavity Exitance Coefficients(CCEC)									
0.0	.209	.209	.209	.179	.179	.179	.122	.122	.122	.070	.070	.070	.022	.022	.022	
1.0	.199	.175	.153	.170	.150	.132	.117	.103	.091	.067	.060	.053	.021	.019	.017	
2.0	.191	.151	.117	.164	.130	.101	.112	.090	.070	.065	.052	.041	.021	.017	.013	
3.0	.183	.133	.093	.157	.115	.081	.108	.080	.057	.062	.047	.033	.020	.015	.011	
4.0	.176	.120	.077	.151	.104	.067	.104	.072	.047	.060	.042	.028	.019	.014	.009	
5.0	.168	.110	.066	.145	.095	.058	.100	.066	.041	.058	.039	.024	.019	.013	.008	
6.0	.161	.101	.058	.139	.088	.051	.096	.061	.036	.055	.036	.021	.018	.012	.007	
7.0	.154	.094	.052	.133	.082	.046	.092	.057	.032	.053	.034	.019	.017	.011	.006	
8.0	.148	.089	.048	.127	.077	.042	.088	.054	.030	.051	.032	.018	.017	.010	.006	
9.0	.142	.084	.044	.122	.073	.039	.085	.051	.028	.049	.030	.016	.016	.010	.005	
10.0	.136	.079	.042	.117	.069	.036	.082	.049	.026	.048	.029	.015	.015	.009	.005	

C Range: 0 - 360DEG
 C Interval: 45.0DEG
 Test Speed: HIGH
 Temperature:25.3DEG
 Operators:JYH
 Test Date:2021-04-15

g Range: 0 - 180DEG
 g Interval: 1.0DEG
 Test System:EVERFINE GO-2000A_V1 SYSTEM V2.0.362
 Humidity:65.0%
 Test Distance:10.950m [K=1.0000]
 Remarks:

UGR(Unified Glare Rating) Table

Test:U:24.00V I:0.7355A P:17.65W PF:1.000 Freq:0Hz Lamp Flux:181.703x1 lm										
NAME: NMT2015-NP					TYPE:			WEIGHT:		
SPEC.:NMT2015-0B24CSS050CC0100-NP					DIM.: 1000*20*15mm			SERIAL No.:		
MFR.: COLORS					SUR.:1000*15mm			Shielding Angle:		
ceiling/cavity	0.7	0.7	0.5	0.5	0.3	0.7	0.7	0.5	0.5	0.3
walls	0.5	0.3	0.5	0.3	0.3	0.5	0.3	0.5	0.3	0.3
working plane	0.2	0.2	0.2	0.2	0.2	0.2	0.2	0.2	0.2	0.2
Room dimensions	Viewed crosswise					Viewed endwise				
x = 2H y = 2H	23.3	24.8	23.6	25.0	25.3	23.3	24.8	23.6	25.0	25.3
3H	24.8	26.2	25.2	26.5	26.8	24.8	26.2	25.1	26.4	26.7
4H	25.4	26.8	25.8	27.0	27.4	25.4	26.7	25.7	27.0	27.3
6H	25.9	27.1	26.2	27.4	27.8	25.7	27.0	26.1	27.3	27.6
8H	26.0	27.2	26.4	27.5	27.9	25.8	27.0	26.2	27.4	27.7
12H	26.1	27.3	26.5	27.6	28.0	25.9	27.0	26.3	27.4	27.7
4H 2H	23.9	25.2	24.3	25.5	25.8	23.9	25.2	24.3	25.5	25.8
3H	25.6	26.8	26.0	27.1	27.5	25.6	26.7	26.0	27.1	27.4
4H	26.4	27.4	26.8	27.8	28.2	26.3	27.3	26.7	27.7	28.1
6H	26.9	27.9	27.4	28.3	28.7	26.8	27.7	27.2	28.1	28.5
8H	27.1	28.0	27.6	28.4	28.9	27.0	27.8	27.4	28.2	28.7
12H	27.3	28.1	27.8	28.5	29.0	27.1	27.8	27.5	28.3	28.7
8H 4H	26.6	27.5	27.1	27.9	28.4	26.6	27.4	27.0	27.9	28.3
6H	27.4	28.1	27.8	28.5	29.0	27.2	27.9	27.7	28.4	28.9
8H	27.6	28.3	28.1	28.7	29.3	27.5	28.1	28.0	28.6	29.1
12H	27.9	28.4	28.4	28.9	29.5	27.6	28.2	28.1	28.7	29.2
12H 4H	26.7	27.4	27.1	27.9	28.3	26.6	27.4	27.1	27.8	28.3
6H	27.4	28.0	27.9	28.5	29.0	27.3	27.9	27.8	28.4	28.9
8H	27.7	28.3	28.3	28.8	29.3	27.6	28.1	28.1	28.6	29.1
Variations with the observer position at spacings:										
S = 1.0H	+ 0.2 / - 0.2					+ 0.2 / - 0.2				
1.5H	+ 0.2 / - 0.3					+ 0.2 / - 0.3				
2.0H	+ 0.2 / - 0.3					+ 0.2 / - 0.3				

CIE Pub.117, 181.7 lm Total Lamp Luminous Flux Correct (8log(F/F0) = -5.9)

C Range: 0 - 360DEG
 C Interval: 45.0DEG
 Test Speed: HIGH
 Temperature:25.3DEG
 Operators:JYH
 Test Date:2021-04-15

g Range: 0 - 180DEG
 g Interval: 1.0DEG
 Test System:EVERFINE GO-2000A_V1 SYSTEM V2.0.362
 Humidity:65.0%
 Test Distance:10.950m [K=1.0000]
 Remarks:

UTILIZATION FACTORS TABLE

Test:U:24.00V I:0.7355A P:17.65W PF:1.000 Freq:0Hz Lamp Flux:181.703x1 lm		
NAME: NMT2015-NP	TYPE:	WEIGHT:
SPEC.:NMT2015-0B24CSS050CC0100-NP	DIM.: 1000*20*15mm	SERIAL No.:
MFR.: COLORS	SUR.:1000*15mm	Shielding Angle:

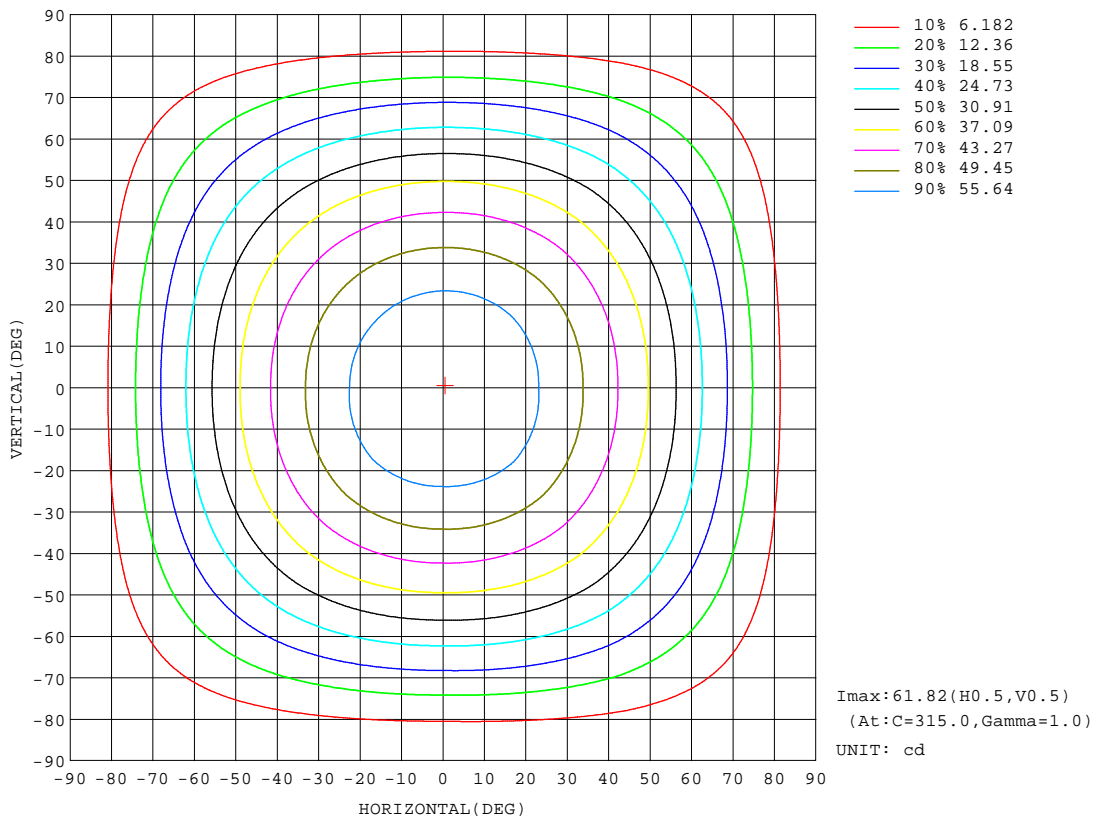
REFLECTANCE										
Ceiling	0.8	0.8	0.8	0.7	0.7	0.7	0.5	0.5	0.5	0
Walls	0.7	0.5	0.3	0.7	0.5	0.3	0.7	0.5	0.3	0
Working plane	0.2	0.2	0.2	0.2	0.2	0.2	0.2	0.2	0.2	0
ROOM INDEX	UTILIZATION FACTORS(PERCENT) k(RI) x RCR = 5									
k = 0.60	57	45	38	56	45	38	54	44	38	31
0.80	67	55	47	65	54	47	63	53	47	40
1.00	75	64	56	74	63	56	71	64	55	48
1.25	82	71	64	80	71	64	78	69	63	55
1.50	87	77	70	85	76	69	82	74	68	60
2.00	94	85	79	92	84	78	88	81	76	68
2.50	98	90	84	96	88	83	91	85	81	72
3.00	101	94	89	99	93	87	95	89	85	76
4.00	105	99	95	103	98	93	98	94	90	81
5.00	108	103	99	105	101	97	100	97	93	84
ROOM INDEX	UF(total)									Direct
According to DIN EN 13032-2 2004			Suspended				SHRNOM = 1.25			

C Range: 0 - 360DEG
 C Interval: 45.0DEG
 Test Speed: HIGH
 Temperature:25.3DEG
 Operators:JYH
 Test Date:2021-04-15

g Range: 0 - 180DEG
 g Interval: 1.0DEG
 Test System:EVERFINE GO-2000A_V1 SYSTEM V2.0.362
 Humidity:65.0%
 Test Distance:10.950m [K=1.0000]
 Remarks:

ISOCANDELA DIAGRAM

Test:U:24.00V I:0.7355A P:17.65W PF:1.000 Freq:0Hz Lamp Flux:181.703x1 lm		
NAME: NMT2015-NP	TYPE:	WEIGHT:
SPEC.:NMT2015-0B24CSS050CC0100-NP	DIM.: 1000*20*15mm	SERIAL No.:
MFR.: COLORS	SUR.:1000*15mm	Shielding Angle:



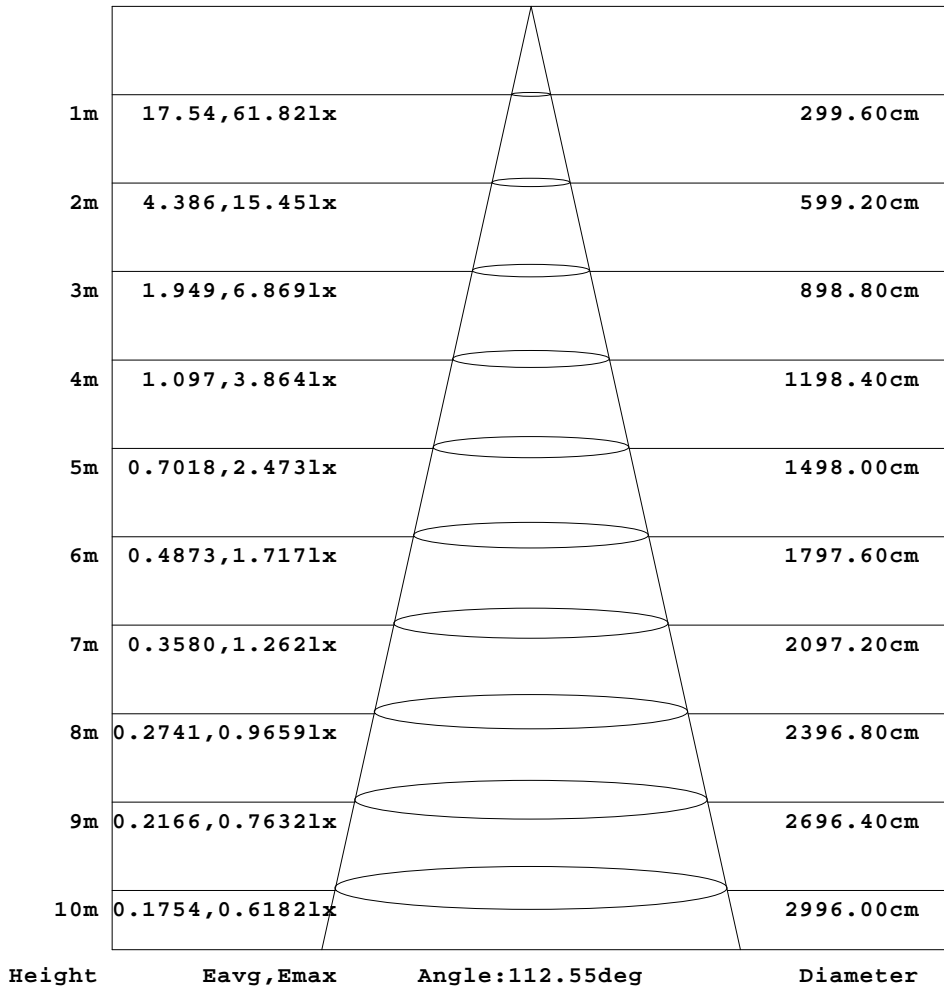
C Range: 0 - 360DEG
 C Interval: 45.0DEG
 Test Speed: HIGH
 Temperature: 25.3DEG
 Operators: JYH
 Test Date: 2021-04-15

Range: 0 - 180DEG
 Interval: 1.0DEG
 Test System: EVERFINE GO-2000A_V1 SYSTEM V2.0.362
 Humidity: 65.0%
 Test Distance: 10.950m [K=1.0000]
 Remarks:

AAI Figure

Test:U:24.00V I:0.7355A P:17.65W PF:1.000 Freq:0Hz Lamp Flux:181.703x1 lm		
NAME: NMT2015-NP	TYPE:	WEIGHT:
SPEC.:NMT2015-0B24CSS050CC0100-NP	DIM.: 1000*20*15mm	SERIAL No.:
MFR.: COLORS	SUR.:1000*15mm	Shielding Angle:

Flux out:130.7 lm



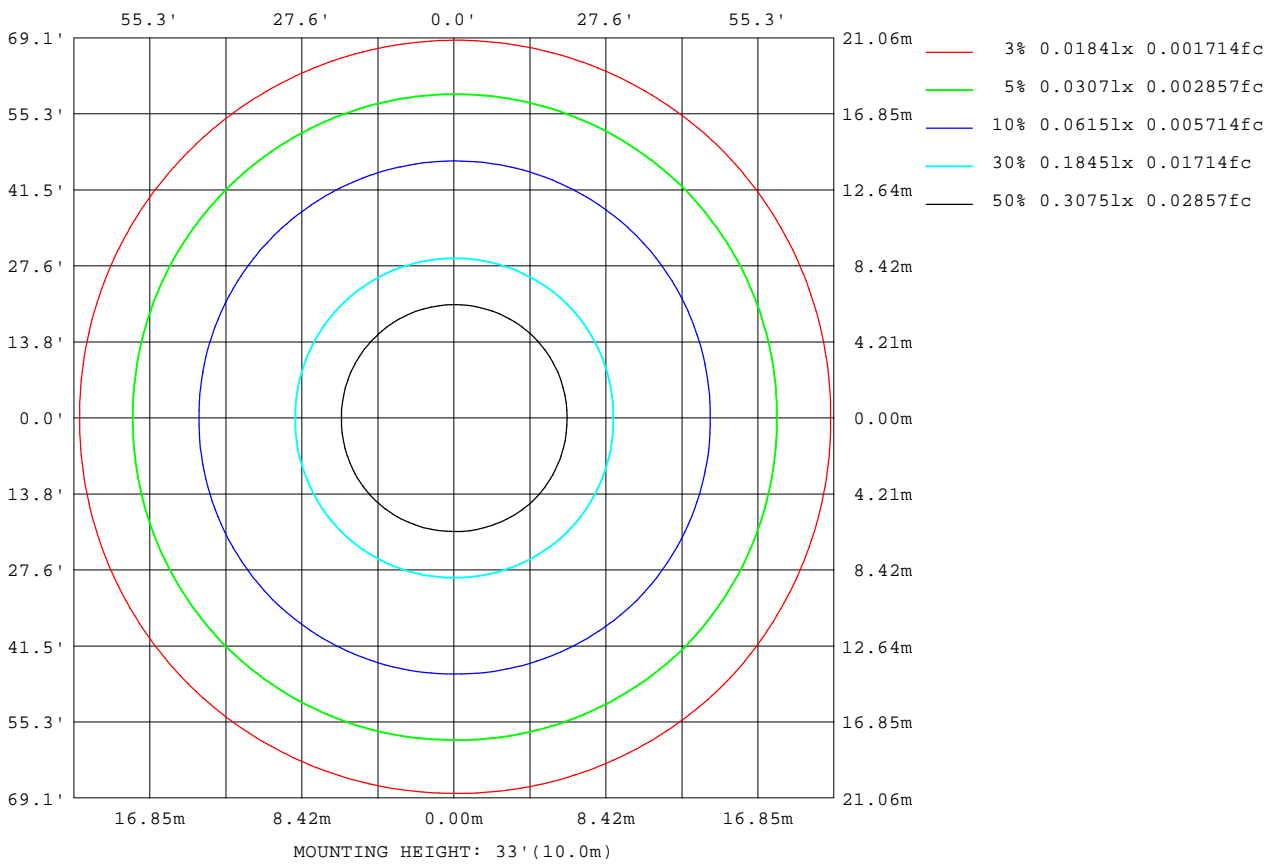
Note:The Curves indicate the illuminated area and the average illumination when the luminaire is at different distance.

C Range: 0 - 360DEG
 C Interval: 45.0DEG
 Test Speed: HIGH
 Temperature:25.3DEG
 Operators:JYH
 Test Date:2021-04-15

Range: 0 - 180DEG
 Interval: 1.0DEG
 Test System:EVERFINE GO-2000A_V1 SYSTEM V2.0.362
 Humidity:65.0%
 Test Distance:10.950m [K=1.0000]
 Remarks:

ISOLUX DIAGRAM

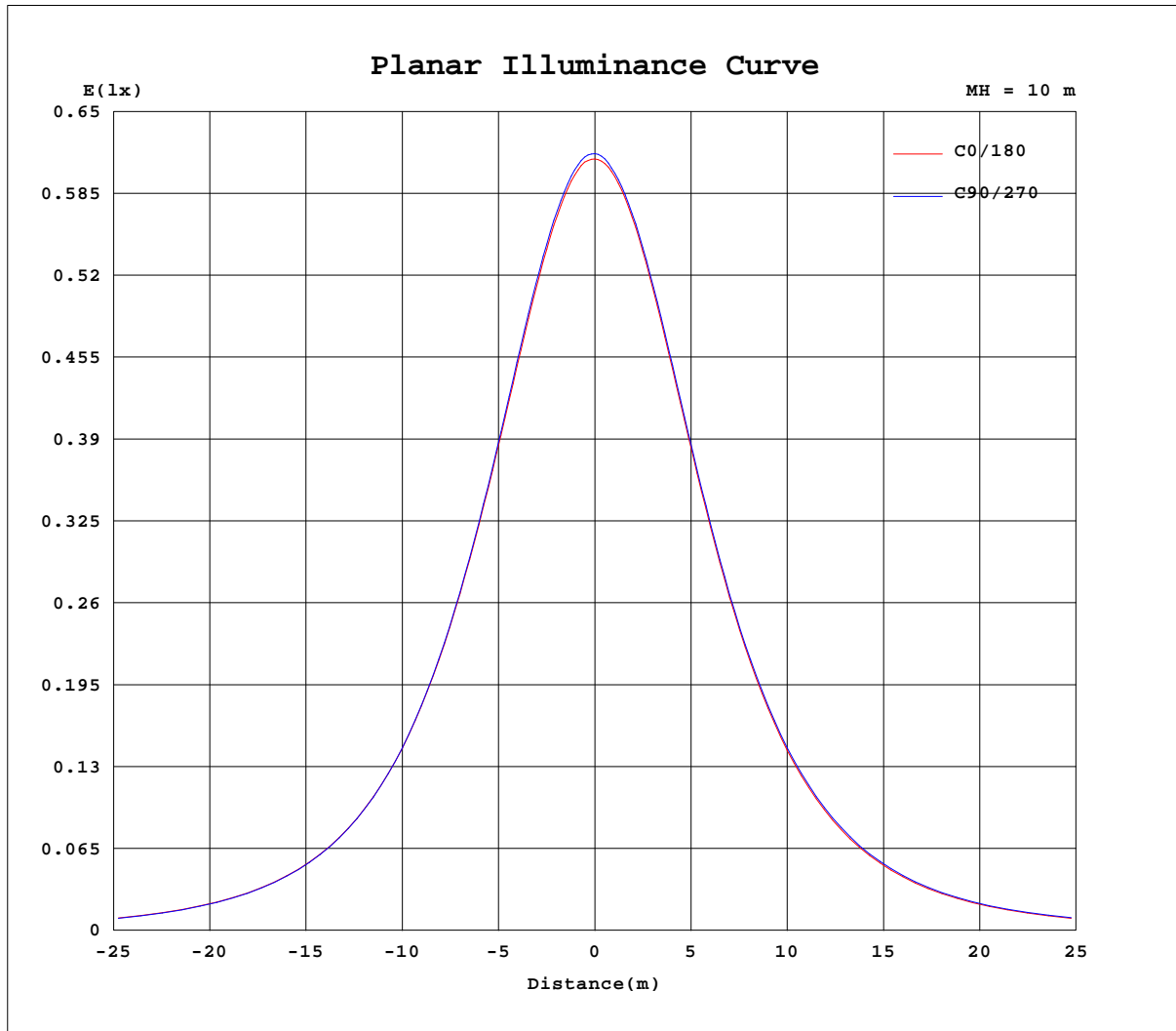
Test:U:24.00V I:0.7355A P:17.65W PF:1.000 Freq:0Hz Lamp Flux:181.703x1 lm		
NAME: NMT2015-NP	TYPE:	WEIGHT:
SPEC.:NMT2015-0B24CSS050CC0100-NP	DIM.: 1000*20*15mm	SERIAL No.:
MFR.: COLORS	SUR.:1000*15mm	Shielding Angle:



C Range: 0 - 360DEG
 C Interval: 45.0DEG
 Test Speed: HIGH
 Temperature:25.3DEG
 Operators:JYH
 Test Date:2021-04-15

Range: 0 - 180DEG
 Interval: 1.0DEG
 Test System:EVERFINE GO-2000A_V1 SYSTEM V2.0.362
 Humidity:65.0%
 Test Distance:10.950m [K=1.0000]
 Remarks:

Planar Illuminance Curve



C Range: 0 - 360DEG
 C Interval: 45.0DEG
 Test Speed: HIGH
 Temperature: 25.3DEG
 Operators: JYH
 Test Date: 2021-04-15

Page Range: 0 - 180DEG
 Interval: 1.0DEG
 Test System: EVERFINE GO-2000A_V1 SYSTEM V2.0.362
 Humidity: 65.0%
 Test Distance: 10.950m [K=1.0000]
 Remarks:

LUMINOUS DISTRIBUTION INTENSITY DATA

Test:U:24.00V I:0.7355A P:17.65W PF:1.000 Freq:0Hz Lamp Flux:181.703x1 lm		
NAME: NMT2015-NP	TYPE:	WEIGHT:
SPEC.:NMT2015-0B24CSS050CC0100-NP	DIM.: 1000*20*15mm	SERIAL No.:
MFR.: COLORS	SUR.:1000*15mm	Shielding Angle:

Table--1

UNIT: cd

C(DEG) g (DEG)	0	45	90	135	180	225	270	315										
0	61.3	61.6	61.7	61.8	61.3	61.6	61.7	61.8										
5	61.1	61.4	61.5	61.5	61.0	61.2	61.2	61.5										
10	60.3	60.7	60.7	60.7	60.1	60.2	60.4	60.6										
15	58.9	59.5	59.4	59.4	58.7	58.8	59.0	59.2										
20	57.1	57.7	57.5	57.5	56.8	56.8	57.2	57.3										
25	54.7	55.4	55.1	55.2	54.4	54.5	54.8	54.9										
30	51.9	52.7	52.2	52.4	51.5	51.7	51.9	52.2										
35	48.6	49.4	48.9	49.0	48.2	48.5	48.6	49.0										
40	45.0	45.7	45.2	45.3	44.5	44.9	45.0	45.4										
45	41.0	41.7	41.1	41.2	40.5	40.9	41.0	41.5										
50	36.7	37.4	36.6	36.8	36.1	36.6	36.8	37.2										
55	32.1	32.8	32.0	32.2	31.6	32.0	32.3	32.6										
60	27.3	27.9	27.1	27.2	26.7	27.1	27.4	27.8										
65	22.3	22.8	21.9	22.1	21.7	22.1	22.4	22.7										
70	17.2	17.6	16.8	16.9	16.6	16.9	17.3	17.5										
75	12.1	12.4	11.5	11.6	11.6	11.7	12.2	12.3										
80	7.35	7.45	6.65	6.74	6.89	6.92	7.19	7.47										
85	3.63	3.54	2.72	3.05	3.38	3.14	3.09	3.48										
90	1.44	1.35	1.02	1.17	1.34	1.27	0.92	1.31										
95	0.72	0.81	0.86	0.83	0.66	0.89	0.73	0.78										
100	0.65	0.80	0.43	0.78	0.67	0.87	0.45	0.69										
105	0.65	0.80	0.22	0.75	0.68	0.85	0.23	0.71										
110	0.67	0.79	0.27	0.73	0.68	0.84	0.28	0.71										
115	0.71	0.79	0.33	0.73	0.68	0.84	0.36	0.71										
120	0.73	0.66	0.40	0.71	0.70	0.59	0.41	0.71										
125	0.73	0.75	0.50	0.70	0.72	0.55	0.48	0.59										
130	0.73	0.65	0.53	0.63	0.72	0.55	0.53	0.56										
135	0.74	0.68	0.61	0.67	0.74	0.61	0.56	0.56										
140	0.79	0.70	0.62	0.72	0.75	0.69	0.59	0.63										
145	0.85	0.73	0.67	0.77	0.77	0.71	0.61	0.65										
150	0.85	0.75	0.72	0.82	0.77	0.73	0.68	0.65										
155	0.85	0.76	0.74	0.87	0.80	0.80	0.77	0.65										
160	0.91	0.79	0.83	0.90	0.83	0.83	0.84	0.65										
165	0.96	0.85	0.90	0.93	0.85	0.85	0.91	0.72										
170	0.96	0.94	0.96	0.98	0.85	0.95	1.00	0.83										
175	0.90	1.01	1.06	1.05	0.85	0.97	1.07	0.95										
180	0.89	1.06	1.06	1.07	0.86	1.06	1.06	1.05										

C Range: 0 - 360DEG
 C Interval: 45.0DEG
 Test Speed: HIGH
 Temperature:25.3DEG
 Operators:JYH
 Test Date:2021-04-15

g Range: 0 - 180DEG
 g Interval: 1.0DEG
 Test System:EVERFINE GO-2000A_V1 SYSTEM V2.0.362
 Humidity:65.0%
 Test Distance:10.950m [K=1.0000]
 Remarks: