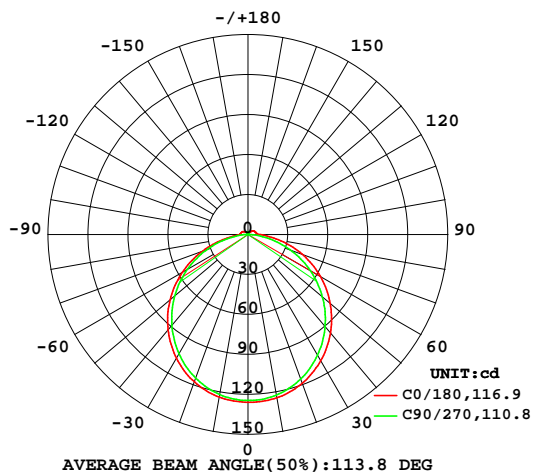


## LUMINAIRE PHOTOMETRIC TEST REPORT

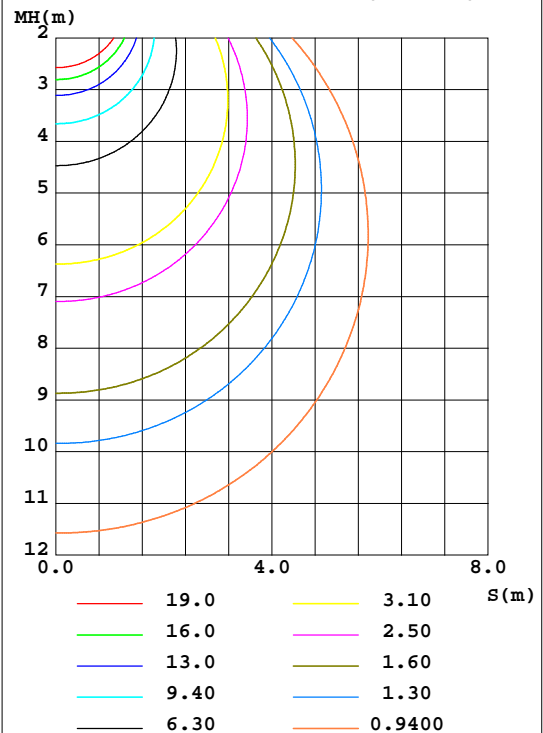
Test:U:48.00V I:0.1830A P:8.780W PF:1.000 Freq:0Hz Lamp Flux:386.682x1 lm		
NAME: NMS1217-Plus	TYPE:	WEIGHT:
SPEC.:NMS1217-9NW48CSN050CC0100-Plus	DIM.: 1000*12*17	SERIAL No.:01
MFR.: COLORS	SUR.:1000*12	Shielding Angle:

DATA OF LAMP		PHOTOMETRIC DATA Eff: 44.04 lm/W			
MODEL	NMS1217-Plus	I <sub>max</sub> (cd)	125.9	S/MH(C0/180)	1.27
NOMINAL POWER(W)	9.6	LOR(%)	100.0	S/MH(C90/270)	1.24
RATED VOLTAGE(V)	48	TOTAL FLUX(lm)	386.68	h UP,DN(C0-180)	2.4,48.3
NOMINAL FLUX(lm)	386.682	CIE CLASS	DIRECT	h UP,DN(C180-360)	2.2,47.1
LAMPS INSIDE	1	h up(%)	4.6	CIBSE SHR NOM	1.25
TEST VOLTAGE(V)	48	h down(%)	95.4	CIBSE SHR MAX	1.35

LUMINOUS INTENSITY DISTRIBUTION DIAGRAM



C0 PLANE ISOLUX DIAGRAM (UNIT:lx)



C Range: 0 - 360DEG  
 C Interval: 45.0DEG  
 Test Speed: HIGH  
 Temperature:25.3DEG  
 Operators:JYH  
 Test Date:2020-06-15

g Range: 0 - 180DEG  
 Interval: 1.0DEG  
 Test System:EVERFINE GO-2000A\_V1 SYSTEM V2.0.362  
 Humidity:65.0%  
 Test Distance:10.950m [K=1.0000]  
 Remarks:

## ZONAL FLUX DIAGRAM

### ZONAL FLUX DIAGRAM:

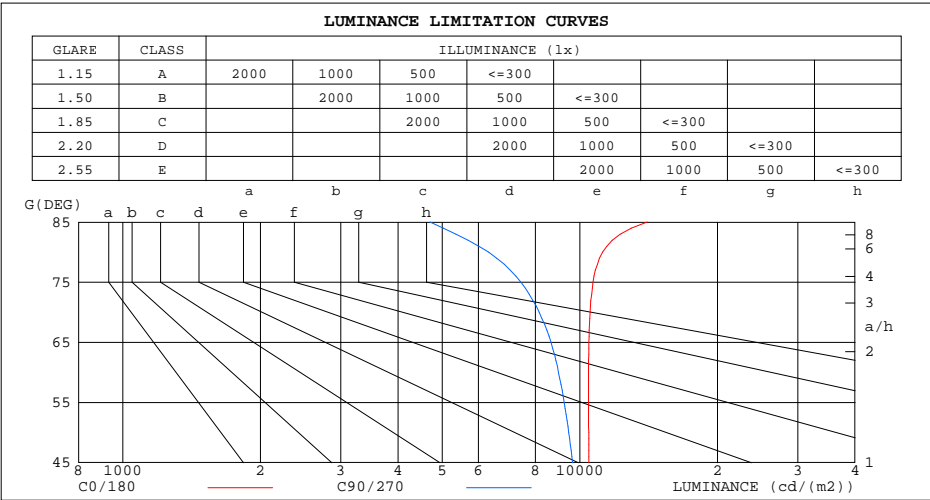
g	C0	C45	C90	C135	C180	C225	C270	C315	g	F zone	F total	%lum,lamp
10	124.5	124.0	122.4	121.8	123.9	122.4	122.0	123.1	0~ 10	11.84	11.84	3.06,3.06
20	119.0	118.8	115.6	114.7	117.7	115.2	114.8	117.7	10~ 20	33.97	45.81	11.8,11.8
30	109.3	109.4	104.5	103.4	107.4	103.8	103.5	108.2	20~ 30	51.57	97.39	25.2,25.2
40	96.44	96.45	90.10	88.83	93.36	89.07	88.94	95.28	30~ 40	62.33	159.7	41.3,41.3
50	80.67	80.71	72.97	71.44	76.33	71.54	71.83	79.66	40~ 50	65.01	224.7	58.1,58.1
60	62.69	62.71	53.89	51.93	56.92	51.97	52.77	61.86	50~ 60	59.40	284.1	73.5,73.5
70	43.25	43.15	33.46	31.07	35.93	31.17	32.35	42.56	60~ 70	46.33	330.5	85.5,85.5
80	23.38	22.93	13.16	11.70	15.93	11.86	12.55	22.84	70~ 80	27.96	358.4	92.7,92.7
90	8.771	7.022	0.9155	4.520	6.374	4.323	0.6475	7.210	80~ 90	10.52	368.9	95.4,95.4
100	6.594	4.701	0.4033	4.067	5.730	3.955	0.3607	4.168	90~100	4.548	373.5	96.6,96.6
110	6.006	3.947	0.6276	3.546	5.270	3.513	0.5883	4.055	100~110	3.779	377.3	97.6,97.6
120	5.306	3.044	0.9618	2.629	4.580	2.699	0.8155	2.959	110~120	3.199	380.5	98.4,98.4
130	4.151	2.024	1.182	1.799	3.557	1.765	1.015	1.992	120~130	2.282	382.8	99,99
140	2.809	1.443	1.369	1.456	2.429	1.409	1.183	1.383	130~140	1.478	384.2	99.4,99.4
150	1.911	1.563	1.496	1.623	1.603	1.603	1.370	1.316	140~150	0.9936	385.2	99.6,99.6
160	2.030	1.650	1.801	1.810	1.690	1.716	1.690	1.402	150~160	0.7527	386.0	99.8,99.8
170	2.031	1.870	2.031	1.984	1.750	1.904	2.011	1.810	160~170	0.5147	386.5	100,100
180	1.897	2.244	2.238	2.238	1.910	2.184	2.244	2.238	170~180	0.1897	386.7	100,100
DEG	LUMINOUS INTENSITY:cd									UNIT:lm		

C Range: 0 - 360DEG  
 C Interval: 45.0DEG  
 Test Speed: HIGH  
 Temperature:25.3DEG  
 Operators:JYH  
 Test Date:2020-06-15

g Range: 0 - 180DEG  
 Interval: 1.0DEG  
 Test System:EVERFINE GO-2000A\_V1 SYSTEM V2.0.362  
 Humidity:65.0%  
 Test Distance:10.950m [K=1.0000]  
 Remarks:

LUMINANCE LIMITATION CURVES

Test:U:48.00V I:0.1830A P:8.780W PF:1.000 Freq:0Hz Lamp Flux:386.682x1 lm		
NAME: NMS1217-Plus	TYPE:	WEIGHT:
SPEC.:NMS1217-9NW48CSN050CC0100-Plus	DIM.: 1000*12*17	SERIAL No.:01
MFR.: COLORS	SUR.:1000*12	Shielding Angle:



LUMINANCE cd/(m2)		
G(180)	C0/180	C90/270
85	14041	4704
80	11219	6317
75	10687	7439
70	10538	8153
65	10467	8652
60	10448	8982
55	10450	9245
50	10459	9460
45	10473	9643

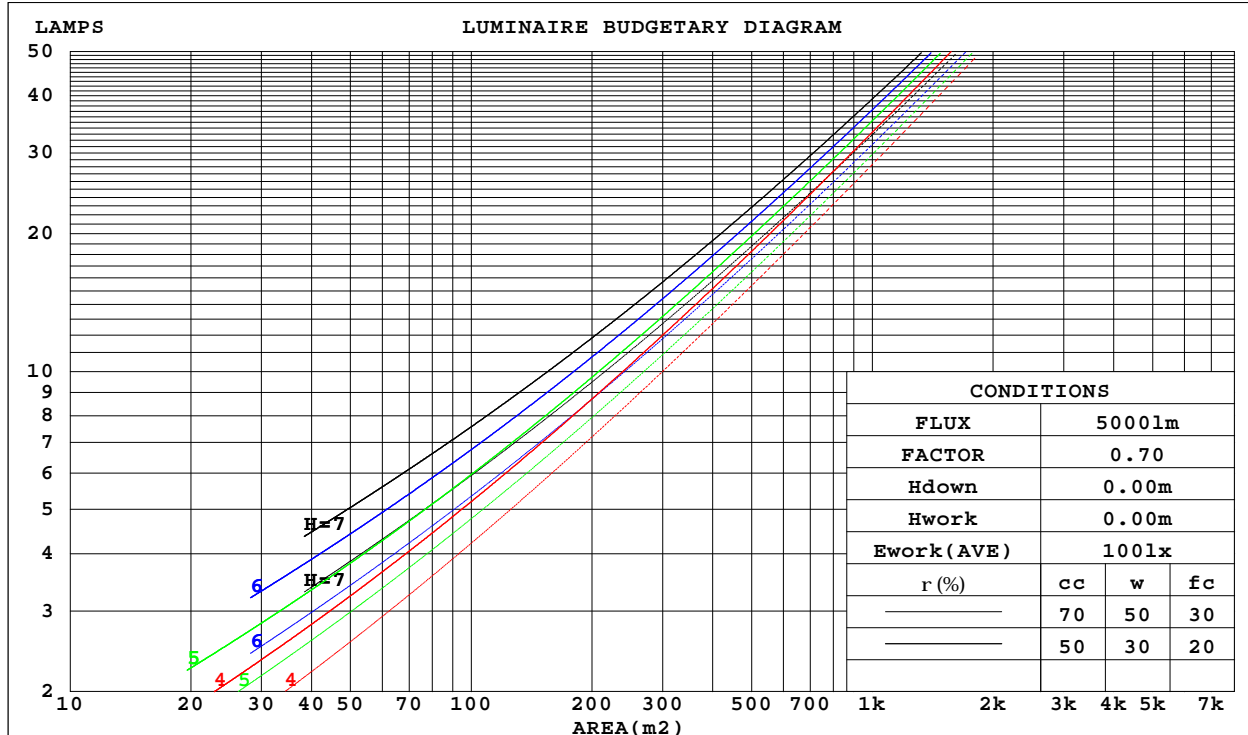
C Range: 0 - 360DEG  
C Interval: 45.0DEG  
Test Speed: HIGH  
Temperature:25.3DEG  
Operators:JYH  
Test Date:2020-06-15

g Range: 0 - 180DEG  
g Interval: 1.0DEG  
Test System:EVERFINE GO-2000A\_V1 SYSTEM V2.0.362  
Humidity:65.0%  
Test Distance:10.950m [K=1.0000]  
Remarks:

CU AND LUMINAIRE BUDGETARY ESTIMATE DIAGRAM

Test:U:48.00V I:0.1830A P:8.780W PF:1.000 Freq:0Hz Lamp Flux:386.682x1 lm		
NAME: NMS1217-Plus	TYPE:	WEIGHT:
SPEC.:NMS1217-9NW48CSN050CC0100-Plus	DIM.: 1000*12*17	SERIAL No.:01
MFR.: COLORS	SUR.:1000*12	Shielding Angle:

r <sub>cc</sub>	80%			70%			50%			30%			10%			0
r <sub>w</sub>	50%	30%	10%	50%	30%	10%	50%	30%	10%	50%	30%	10%	50%	30%	10%	0
r <sub>fc</sub>	20%			20%			20%			20%			20%			0
RCR	RCR:Room Cavity Ratio			Coefficients of Utilization(CU)												
0.0	1.18	1.18	1.18	1.15	1.15	1.15	1.09	1.09	1.09	1.03	1.03	1.03	.98	.98	.98	.95
1.0	1.02	.98	.94	.99	.95	.92	.94	.91	.88	.90	.87	.85	.85	.83	.81	.79
2.0	.89	.82	.76	.86	.80	.75	.82	.77	.72	.78	.74	.70	.75	.71	.68	.65
3.0	.78	.69	.63	.76	.68	.62	.72	.66	.60	.69	.63	.59	.66	.61	.57	.55
4.0	.69	.60	.53	.67	.59	.52	.64	.57	.51	.61	.55	.50	.58	.53	.49	.46
5.0	.61	.52	.46	.60	.51	.45	.57	.50	.44	.55	.48	.43	.52	.47	.42	.40
6.0	.55	.46	.40	.54	.45	.39	.52	.44	.39	.50	.43	.38	.48	.42	.37	.35
7.0	.50	.41	.35	.49	.41	.35	.47	.39	.34	.45	.38	.33	.43	.37	.33	.31
8.0	.46	.37	.31	.45	.36	.31	.43	.36	.30	.41	.35	.30	.40	.34	.29	.27
9.0	.42	.33	.28	.41	.33	.28	.39	.32	.27	.38	.32	.27	.37	.31	.27	.25
10.0	.38	.31	.25	.38	.30	.25	.36	.30	.25	.35	.29	.24	.34	.28	.24	.22



C Range: 0 - 360DEG  
 C Interval: 45.0DEG  
 Test Speed: HIGH  
 Temperature:25.3DEG  
 Operators:JYH  
 Test Date:2020-06-15

g Range: 0 - 180DEG  
 g Interval: 1.0DEG  
 Test System:EVERFINE GO-2000A\_V1 SYSTEM V2.0.362  
 Humidity:65.0%  
 Test Distance:10.950m [K=1.0000]  
 Remarks:

## WEC AND CCEC

Test:U:48.00V I:0.1830A P:8.780W PF:1.000 Freq:0Hz Lamp Flux:386.682x1 lm		
NAME: NMS1217-Plus	TYPE:	WEIGHT:
SPEC.:NMS1217-9NW48CSN050CC0100-Plus	DIM.: 1000*12*17	SERIAL No.:01
MFR.: COLORS	SUR.:1000*12	Shielding Angle:

rcc	80%			70%			50%			30%			10%			0														
rw	50%	30%	10%	50%	30%	10%	50%	30%	10%	50%	30%	10%	50%	30%	10%	0														
rfc	20%			20%			20%			20%			20%			0														
RCR	RCR:Room Cavity Ratio															Wall Exitance Coefficients(WEC)														
0.0																														
1.0	.321	.182	.058	.312	.178	.057	.296	.170	.054	.281	.162	.052	.268	.155	.050															
2.0	.297	.163	.050	.290	.160	.049	.275	.153	.048	.262	.147	.046	.250	.142	.045															
3.0	.273	.145	.044	.266	.143	.043	.254	.138	.042	.242	.133	.041	.231	.128	.040															
4.0	.251	.130	.038	.245	.128	.038	.234	.124	.037	.223	.120	.036	.214	.116	.035															
5.0	.232	.118	.034	.226	.116	.034	.216	.112	.033	.207	.109	.032	.198	.106	.032															
6.0	.214	.107	.031	.210	.106	.030	.200	.103	.030	.192	.100	.029	.184	.097	.029															
7.0	.199	.098	.028	.195	.097	.028	.187	.094	.027	.179	.092	.027	.172	.089	.026															
8.0	.186	.091	.026	.182	.090	.025	.175	.087	.025	.168	.085	.024	.161	.083	.024															
9.0	.174	.084	.024	.170	.083	.023	.164	.081	.023	.157	.079	.023	.151	.077	.022															
10.0	.163	.078	.022	.160	.077	.022	.154	.076	.021	.148	.074	.021	.143	.072	.021															

rcc	80%			70%			50%			30%			10%			0
rw	50%	30%	10%	50%	30%	10%	50%	30%	10%	50%	30%	10%	50%	30%	10%	0
rfc	20%			20%			20%			20%			20%			0
RCR	RCR:Room Cavity Ratio			Ceiling Cavity Exitance Coefficients(CCEC)												
0.0	.225	.225	.225	.193	.193	.193	.131	.131	.131	.076	.076	.076	.024	.024	.024	
1.0	.216	.191	.169	.185	.164	.145	.127	.113	.100	.073	.065	.058	.023	.021	.019	
2.0	.208	.167	.133	.179	.144	.115	.122	.100	.080	.071	.058	.047	.023	.019	.015	
3.0	.201	.150	.110	.172	.129	.095	.118	.090	.067	.068	.052	.039	.022	.017	.013	
4.0	.193	.137	.094	.166	.118	.082	.114	.082	.057	.066	.048	.034	.021	.016	.011	
5.0	.186	.127	.083	.159	.110	.072	.110	.077	.051	.064	.045	.030	.021	.015	.010	
6.0	.179	.118	.075	.153	.102	.065	.106	.072	.046	.061	.042	.028	.020	.014	.009	
7.0	.172	.111	.069	.148	.097	.060	.102	.068	.043	.059	.040	.025	.019	.013	.008	
8.0	.165	.106	.065	.142	.092	.057	.098	.064	.040	.057	.038	.024	.019	.012	.008	
9.0	.159	.101	.061	.137	.088	.054	.095	.062	.038	.055	.036	.023	.018	.012	.008	
10.0	.153	.097	.059	.132	.084	.051	.092	.059	.036	.054	.035	.022	.017	.011	.007	

C Range: 0 - 360DEG  
C Interval: 45.0DEG  
Test Speed: HIGH  
Temperature:25.3DEG  
Operators:JYH  
Test Date:2020-06-15

g Range: 0 - 180DEG  
g Interval: 1.0DEG  
Test System:EVERFINE GO-2000A\_V1 SYSTEM V2.0.362  
Humidity:65.0%  
Test Distance:10.950m [K=1.0000]  
Remarks:

UGR(Unified Glare Rating) Table

Test:U:48.00V I:0.1830A P:8.780W PF:1.000 Freq:0Hz Lamp Flux:386.682x1 lm											
NAME: NMS1217-Plus					TYPE:			WEIGHT:			
SPEC.:NMS1217-9NW48CSN050CC0100-Plus					DIM.: 1000*12*17			SERIAL No.:01			
MFR.: COLORS					SUR.:1000*12			Shielding Angle:			
ceiling/cavity	0.7	0.7	0.5	0.5	0.3	0.7	0.7	0.5	0.5	0.3	
walls	0.5	0.3	0.5	0.3	0.3	0.5	0.3	0.5	0.3	0.3	
working plane	0.2	0.2	0.2	0.2	0.2	0.2	0.2	0.2	0.2	0.2	
Room dimensions		Viewed crosswise				Viewed endwise					
x = 2H y = 2H	24.4	25.9	24.7	26.1	26.4	23.9	25.3	24.2	25.6	25.9	
	3H	26.2	27.5	26.5	27.9	28.2	25.4	26.7	25.7	27.1	27.4
	4H	27.0	28.3	27.4	28.6	29.0	26.0	27.3	26.4	27.6	27.9
	6H	27.7	28.9	28.1	29.3	29.6	26.4	27.6	26.8	27.9	28.3
	8H	28.0	29.2	28.4	29.5	29.9	26.5	27.6	26.9	28.0	28.4
	12H	28.3	29.4	28.7	29.8	30.2	26.5	27.6	26.9	28.0	28.4
4H	2H	25.0	26.3	25.4	26.7	27.0	24.7	25.9	25.0	26.3	26.6
	3H	27.0	28.2	27.5	28.5	28.9	26.4	27.5	26.8	27.9	28.3
	4H	28.0	29.0	28.4	29.4	29.9	27.1	28.2	27.6	28.6	29.0
	6H	28.9	29.8	29.3	30.2	30.7	27.7	28.6	28.1	29.0	29.5
	8H	29.2	30.1	29.7	30.5	31.0	27.8	28.7	28.3	29.1	29.6
	12H	29.6	30.4	30.1	30.9	31.4	27.9	28.7	28.4	29.2	29.7
8H	4H	28.3	29.2	28.8	29.6	30.1	27.6	28.4	28.1	28.9	29.4
	6H	29.4	30.1	29.9	30.6	31.1	28.3	29.0	28.9	29.5	30.1
	8H	29.9	30.5	30.4	31.1	31.6	28.6	29.2	29.1	29.8	30.3
	12H	30.4	31.0	31.0	31.5	32.1	28.8	29.3	29.4	29.9	30.5
12H	4H	28.3	29.1	28.8	29.6	30.1	27.6	28.4	28.1	28.9	29.4
	6H	29.5	30.1	30.0	30.6	31.2	28.5	29.1	29.0	29.6	30.2
	8H	30.1	30.6	30.6	31.2	31.7	28.9	29.4	29.4	29.9	30.5
Variations with the observer position at spacings:											
S = 1.0H	+ 0.1 / - 0.2				+ 0.1 / - 0.2						
1.5H	+ 0.2 / - 0.3				+ 0.2 / - 0.4						
2.0H	+ 0.1 / - 0.3				+ 0.2 / - 0.4						

CIE Pub.117, 386.7 lm Total Lamp Luminous Flux Correct (8log(F/F0) = -3.3)

C Range: 0 - 360DEG  
C Interval: 45.0DEG  
Test Speed: HIGH  
Temperature:25.3DEG  
Operators:JYH  
Test Date:2020-06-15

g Range: 0 - 180DEG  
g Interval: 1.0DEG  
Test System:EVERFINE GO-2000A\_V1 SYSTEM V2.0.362  
Humidity:65.0%  
Test Distance:10.950m [K=1.0000]  
Remarks:

### UTILIZATION FACTORS TABLE

Test:U:48.00V I:0.1830A P:8.780W PF:1.000 Freq:0Hz Lamp Flux:386.682x1 lm		
NAME: NMS1217-Plus	TYPE:	WEIGHT:
SPEC.:NMS1217-9NW48CSN050CC0100-Plus	DIM.: 1000*12*17	SERIAL No.:01
MFR.: COLORS	SUR.:1000*12	Shielding Angle:

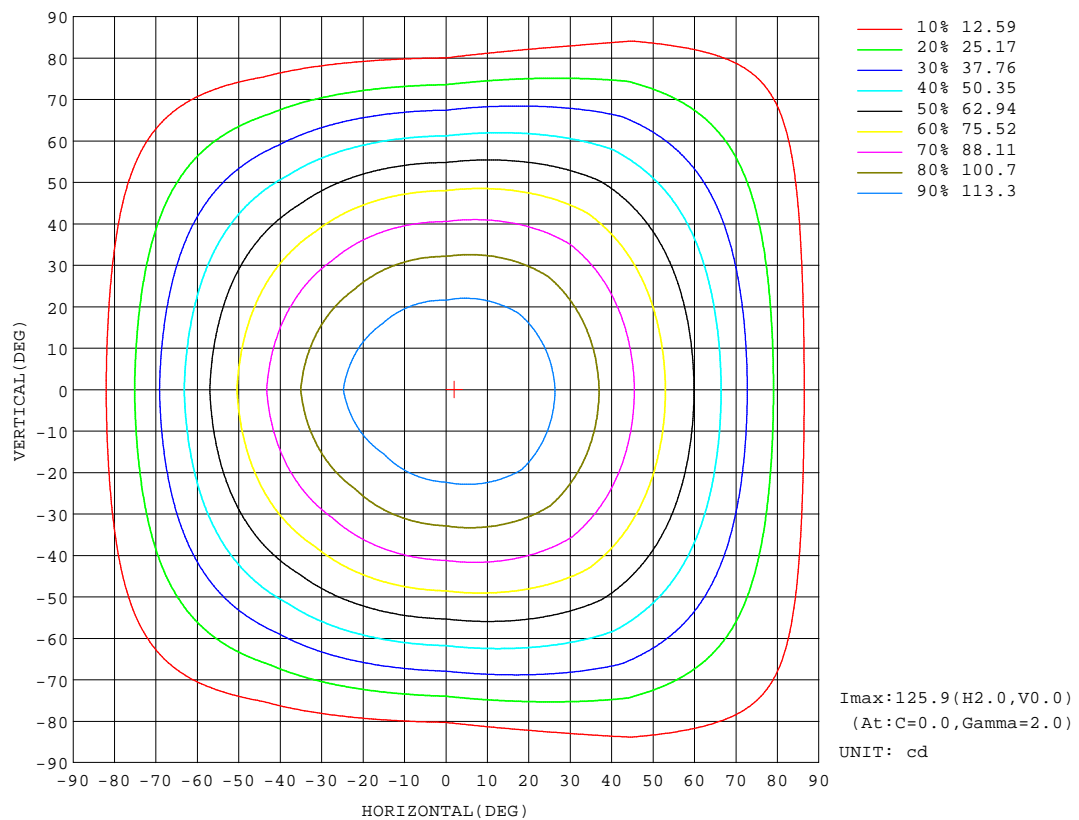
REFLECTANCE										
Ceiling	0.8	0.8	0.8	0.7	0.7	0.7	0.5	0.5	0.5	0
Walls	0.7	0.5	0.3	0.7	0.5	0.3	0.7	0.5	0.3	0
Working plane	0.2	0.2	0.2	0.2	0.2	0.2	0.2	0.2	0.2	0
ROOM INDEX	UTILIZATION FACTORS(PERCENT) $k(RI) \times RCR = 5$									
$k = 0.60$	55	44	37	55	43	37	53	43	36	30
0.80	65	53	46	64	53	46	62	52	45	38
1.00	74	62	55	72	61	54	70	63	54	46
1.25	81	70	62	79	69	62	76	67	61	53
1.50	86	75	68	84	74	67	80	72	66	58
2.00	93	84	77	91	82	76	86	80	74	65
2.50	97	88	82	94	87	81	90	84	79	69
3.00	100	93	87	98	91	86	93	87	83	73
4.00	104	98	93	101	96	91	97	92	88	78
5.00	107	102	97	104	99	95	99	95	92	81
ROOM INDEX	UF(total)									Direct
According to DIN EN 13032-2 2004			Suspended					SHRNOM = 1.25		

C Range: 0 - 360DEG  
C Interval: 45.0DEG  
Test Speed: HIGH  
Temperature:25.3DEG  
Operators:JYH  
Test Date:2020-06-15

g Range: 0 - 180DEG  
g Interval: 1.0DEG  
Test System:EVERFINE GO-2000A\_V1 SYSTEM V2.0.362  
Humidity:65.0%  
Test Distance:10.950m [K=1.0000]  
Remarks:

## ISOCANDELA DIAGRAM

Test:U:48.00V I:0.1830A P:8.780W PF:1.000 Freq:0Hz Lamp Flux:386.682x1 lm		
NAME: NMS1217-Plus	TYPE:	WEIGHT:
SPEC.:NMS1217-9NW48CSN050CC0100-Plus	DIM.: 1000*12*17	SERIAL No.:01
MFR.: COLORS	SUR.:1000*12	Shielding Angle:



C Range: 0 - 360DEG  
C Interval: 45.0DEG  
Test Speed: HIGH  
Temperature:25.3DEG  
Operators:JYH  
Test Date:2020-06-15

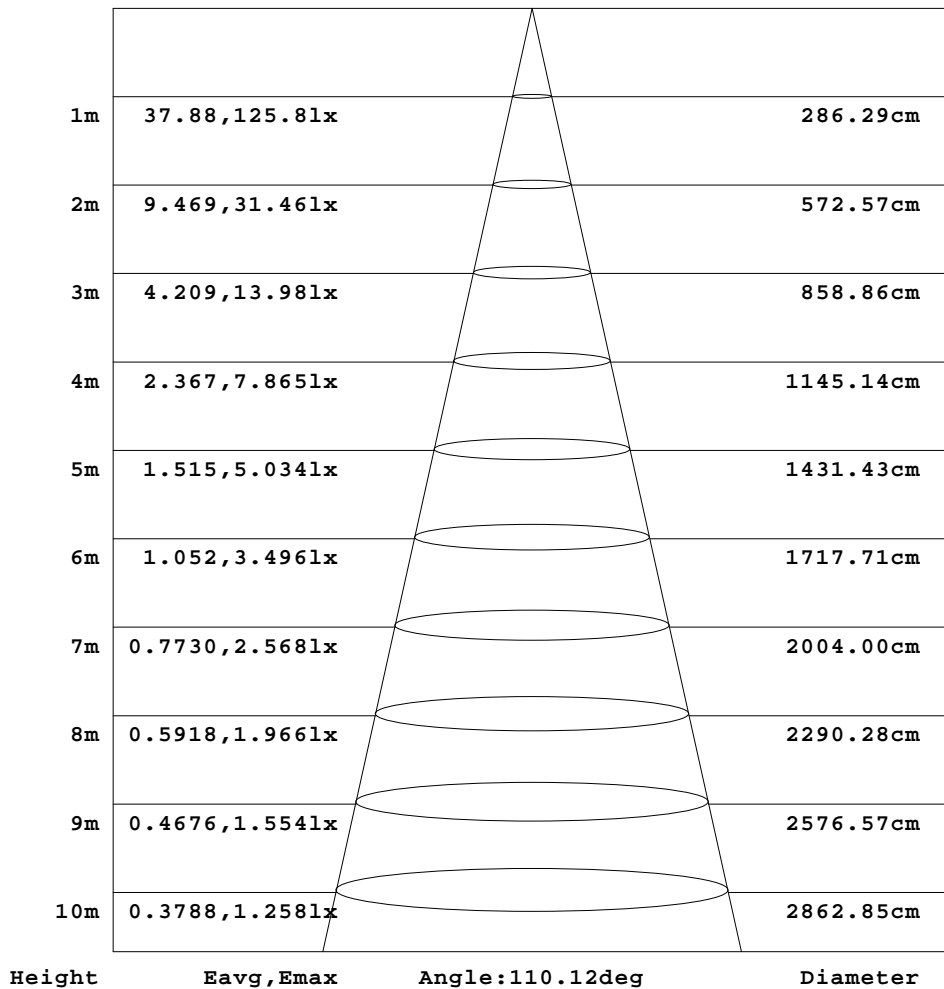
Range: 0 - 180DEG  
Interval: 1.0DEG  
Test System:EVERFINE GO-2000A\_V1 SYSTEM V2.0.362  
Humidity:65.0%  
Test Distance:10.950m [K=1.0000]  
Remarks:



### AAI Figure

Test:U:48.00V I:0.1830A P:8.780W PF:1.000 Freq:0Hz Lamp Flux:386.682x1 lm		
NAME: NMS1217-Plus	TYPE:	WEIGHT:
SPEC.:NMS1217-9NW48CSN050CC0100-Plus	DIM.: 1000*12*17	SERIAL No.:01
MFR.: COLORS	SUR.:1000*12	Shielding Angle:

Flux out:261.6 lm



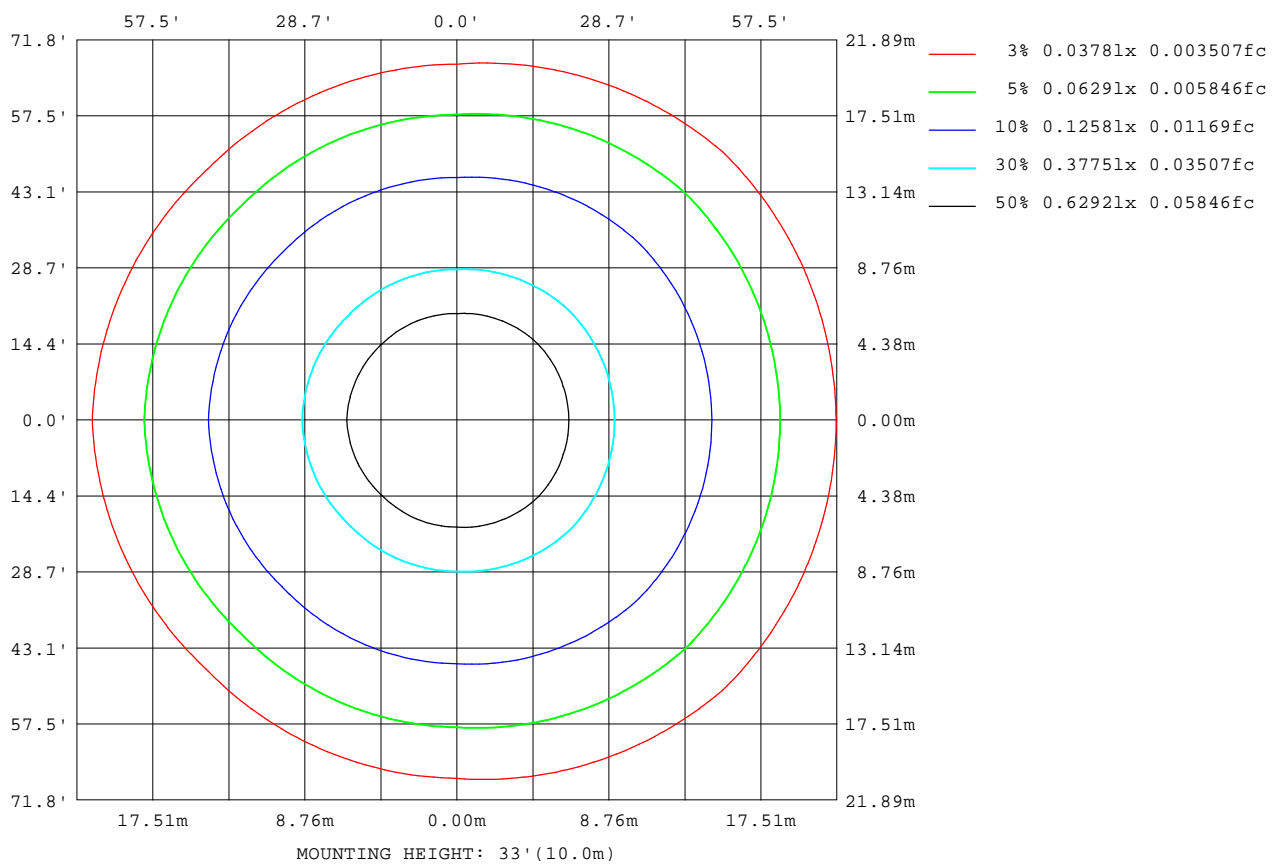
Note:The Curves indicate the illuminated area and the average illumination when the luminaire is at different distance.

C Range: 0 - 360DEG  
C Interval: 45.0DEG  
Test Speed: HIGH  
Temperature:25.3DEG  
Operators:JYH  
Test Date:2020-06-15

g Range: 0 - 180DEG  
g Interval: 1.0DEG  
Test System:EVERFINE GO-2000A\_V1 SYSTEM V2.0.362  
Humidity:65.0%  
Test Distance:10.950m [K=1.0000]  
Remarks:

## ISOLUX DIAGRAM

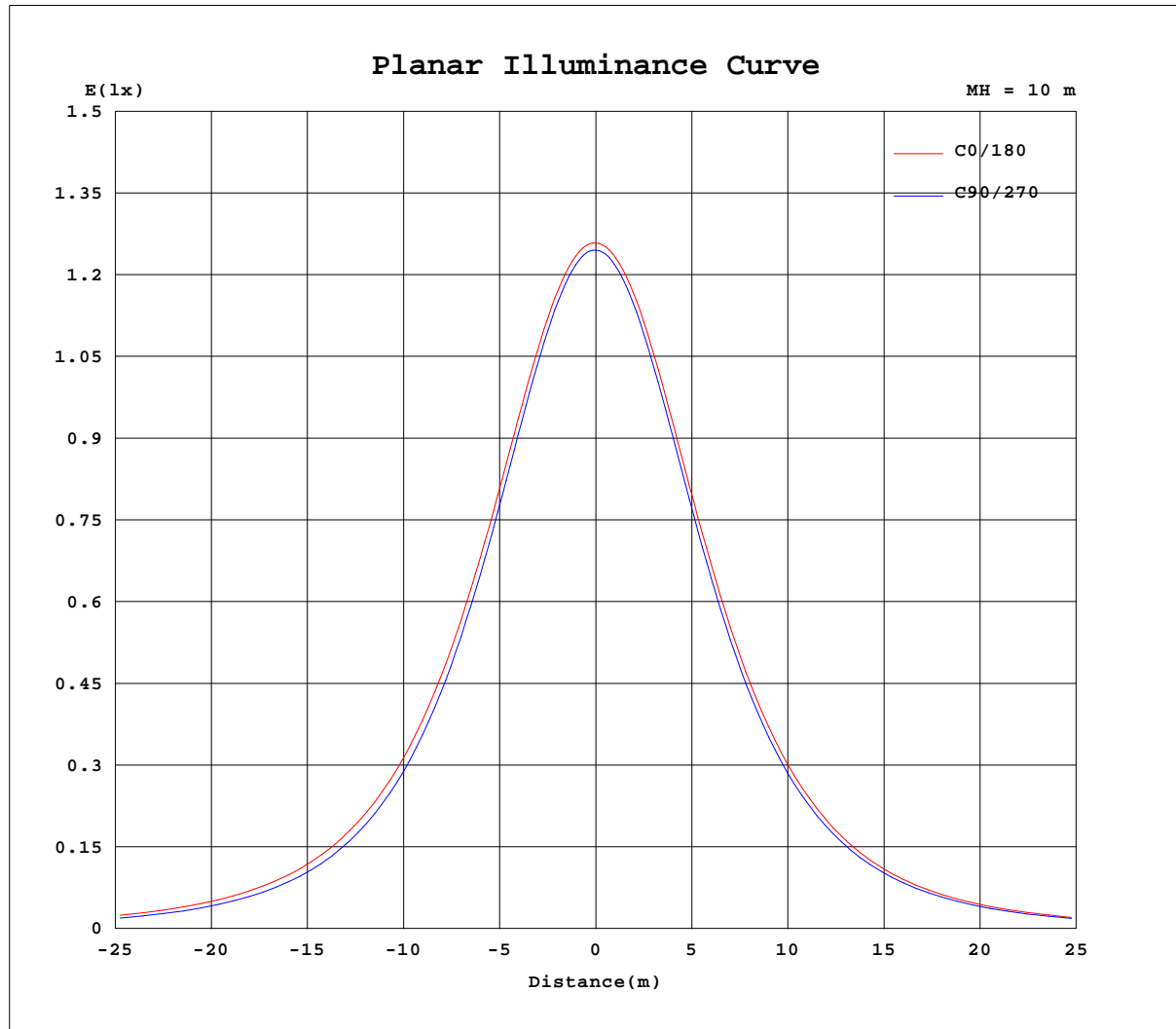
Test:U:48.00V I:0.1830A P:8.780W PF:1.000 Freq:0Hz Lamp Flux:386.682x1 lm		
NAME: NMS1217-Plus	TYPE:	WEIGHT:
SPEC.:NMS1217-9NW48CSN050CC0100-Plus	DIM.: 1000*12*17	SERIAL No.:01
MFR.: COLORS	SUR.:1000*12	Shielding Angle:



C Range: 0 - 360DEG  
 C Interval: 45.0DEG  
 Test Speed: HIGH  
 Temperature:25.3DEG  
 Operators:JYH  
 Test Date:2020-06-15

g Range: 0 - 180DEG  
 g Interval: 1.0DEG  
 Test System:EVERFINE GO-2000A\_V1 SYSTEM V2.0.362  
 Humidity:65.0%  
 Test Distance:10.950m [K=1.0000]  
 Remarks:

## Planar Illuminance Curve



C Range: 0 - 360DEG  
C Interval: 45.0DEG  
Test Speed: HIGH  
Temperature: 25.3DEG  
Operators: JYH  
Test Date: 2020-06-15

Range: 0 - 180DEG  
Interval: 1.0DEG  
Test System: EVERFINE GO-2000A\_V1 SYSTEM V2.0.362  
Humidity: 65.0%  
Test Distance: 10.950m [K=1.0000]  
Remarks:

## LUMINOUS DISTRIBUTION INTENSITY DATA

Test:U:48.00V I:0.1830A P:8.780W PF:1.000 Freq:0Hz Lamp Flux:386.682x1 lm		
NAME: NMS1217-Plus	TYPE:	WEIGHT:
SPEC.:NMS1217-9NW48CSN050CC0100-Plus	DIM.: 1000*12*17	SERIAL No.:01
MFR.: COLORS	SUR.:1000*12	Shielding Angle:

Table--1

UNIT: cd

C(DEC) g (DEC)	0	45	90	135	180	225	270	315										
0	126	125	125	124	126	125	125	124										
5	126	125	124	124	125	124	124	124										
10	124	124	122	122	124	122	122	123										
15	122	122	120	119	121	119	119	121										
20	119	119	116	115	118	115	115	118										
25	115	115	110	110	113	110	110	113										
30	109	109	104	103	107	104	103	108										
35	103	103	97.7	96.5	101	96.8	96.6	102										
40	96.4	96.5	90.1	88.8	93.4	89.1	88.9	95.3										
45	88.9	88.9	81.8	80.4	85.2	80.6	80.7	87.8										
50	80.7	80.7	73.0	71.4	76.3	71.5	71.8	79.7										
55	71.9	72.0	63.6	61.9	66.9	61.9	62.5	71.0										
60	62.7	62.7	53.9	51.9	56.9	52.0	52.8	61.9										
65	53.1	53.1	43.9	41.6	46.5	41.6	42.6	52.4										
70	43.3	43.2	33.5	31.1	35.9	31.2	32.3	42.6										
75	33.2	33.0	23.1	20.8	25.5	20.9	22.2	32.6										
80	23.4	22.9	13.2	11.7	15.9	11.9	12.6	22.8										
85	14.7	13.8	4.92	5.88	8.87	5.75	4.47	13.9										
90	8.77	7.02	0.92	4.52	6.37	4.32	0.65	7.21										
95	6.99	4.98	0.86	4.28	5.94	4.11	0.62	4.93										
100	6.59	4.70	0.40	4.07	5.73	3.95	0.36	4.17										
105	6.18	4.26	0.42	3.82	5.52	3.76	0.44	4.22										
110	6.01	3.95	0.63	3.55	5.27	3.51	0.59	4.05										
115	5.70	3.70	0.75	3.29	4.96	3.05	0.70	3.85										
120	5.31	3.04	0.96	2.63	4.58	2.70	0.82	2.96										
125	4.80	2.53	1.06	2.22	4.15	2.23	0.92	2.42										
130	4.15	2.02	1.18	1.80	3.56	1.77	1.02	1.99										
135	3.51	1.62	1.26	1.44	3.05	1.43	1.10	1.63										
140	2.81	1.44	1.37	1.46	2.43	1.41	1.18	1.38										
145	2.14	1.51	1.45	1.53	1.78	1.48	1.25	1.34										
150	1.91	1.56	1.50	1.62	1.60	1.60	1.37	1.32										
155	1.92	1.62	1.61	1.72	1.62	1.62	1.53	1.34										
160	2.03	1.65	1.80	1.81	1.69	1.72	1.69	1.40										
165	2.03	1.73	1.90	1.89	1.76	1.81	1.85	1.61										
170	2.03	1.87	2.03	1.98	1.75	1.90	2.01	1.81										
175	1.90	2.04	2.12	2.08	1.76	2.04	2.16	2.03										
180	1.90	2.24	2.24	2.24	1.91	2.18	2.24	2.24										

C Range: 0 - 360DEG  
C Interval: 45.0DEG  
Test Speed: HIGH  
Temperature:25.3DEG  
Operators:JYH  
Test Date:2020-06-15

g Range: 0 - 180DEG  
g Interval: 1.0DEG  
Test System:EVERFINE GO-2000A\_V1 SYSTEM V2.0.362  
Humidity:65.0%  
Test Distance:10.950m [K=1.0000]  
Remarks: