

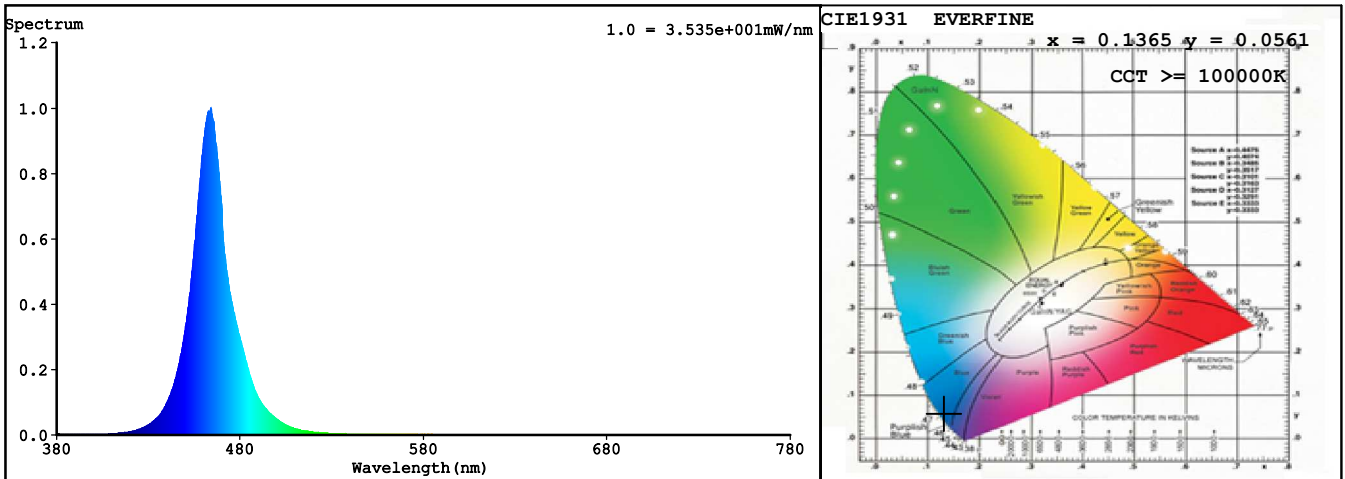
Spectrum Test Report

Sample : NM3D1515	Date : 2019-07-01 09:28:50
Specification : NM3D1515-0B24CSN050CC0100	Sam. Status : 1M
Sample No. : 1	Standard :
Manufacturer : COLORS	Instrument : HaasSuite(EVERFINE)
Remark : B	Test by : LYH

Test Condition

Temperature : 25.3Deg	RH : 65.0%
WL Range : 380nm-780nm	IP : 48659 (74%)
Test Mode : Accuracy Test	T : 150 ms
Sensitivity : High	

Spectrum



Colorimetric Parameters

Chromaticity Coordinate: $x = 0.1365$ $y = 0.0561$ / $u' = 0.1606$ $v' = 0.1484$ ($duv=1.68e-01$)
 CCT>=1000000K Prcp WL: Ld=467.4nm Purity=97.0%
 Peak WL: Lp=464nm FWHM: =19.1nm Ratio:R=0.5% G=15.0% B=84.5%

Render Index: Ra = 0.4 TM30:Rf=0 Rg=-104

R1 =0 R2 =0 R3 =0 R4 =0 R5 =3 R6 =0 R7 =0
 R8 =0 R9 =0 R10=0 R11=0 R12=0 R13=0 R14=0 R15=1

LEVEL:OUT WHITE:OUT

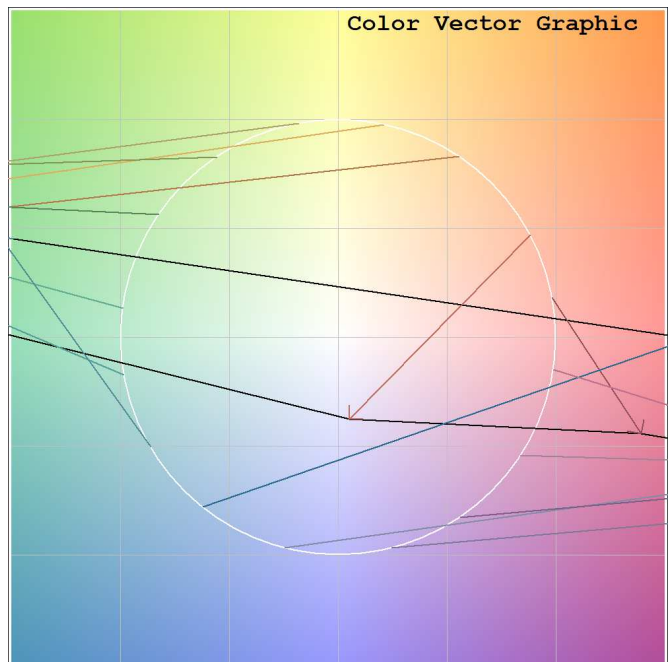
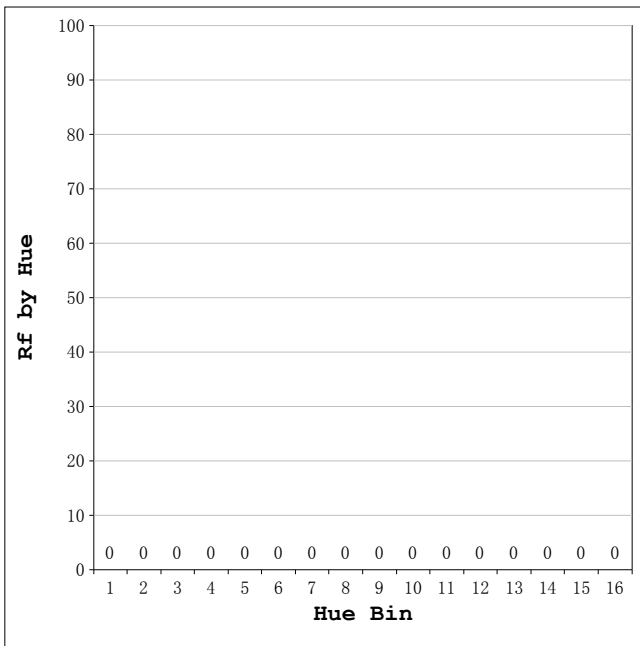
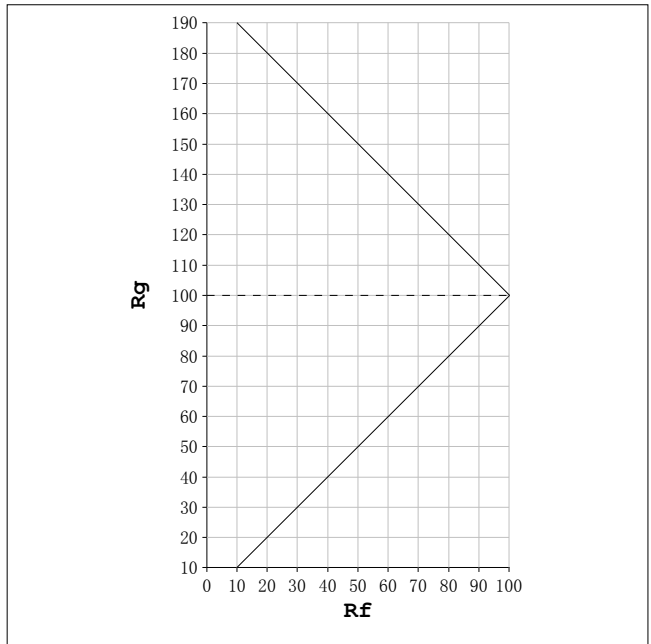
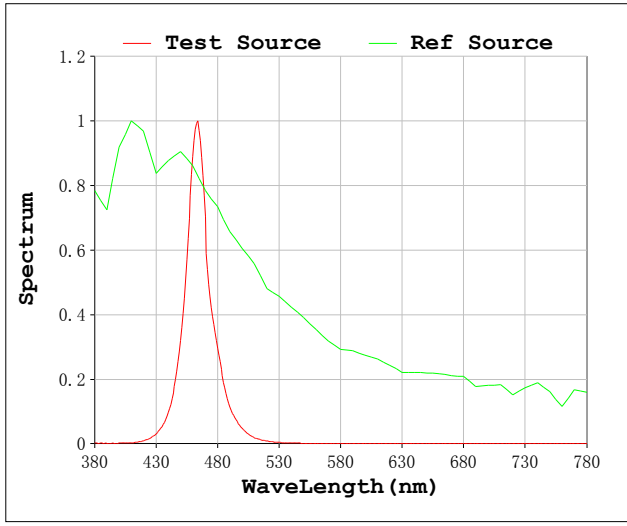
Photometric & Radiometric Parameters

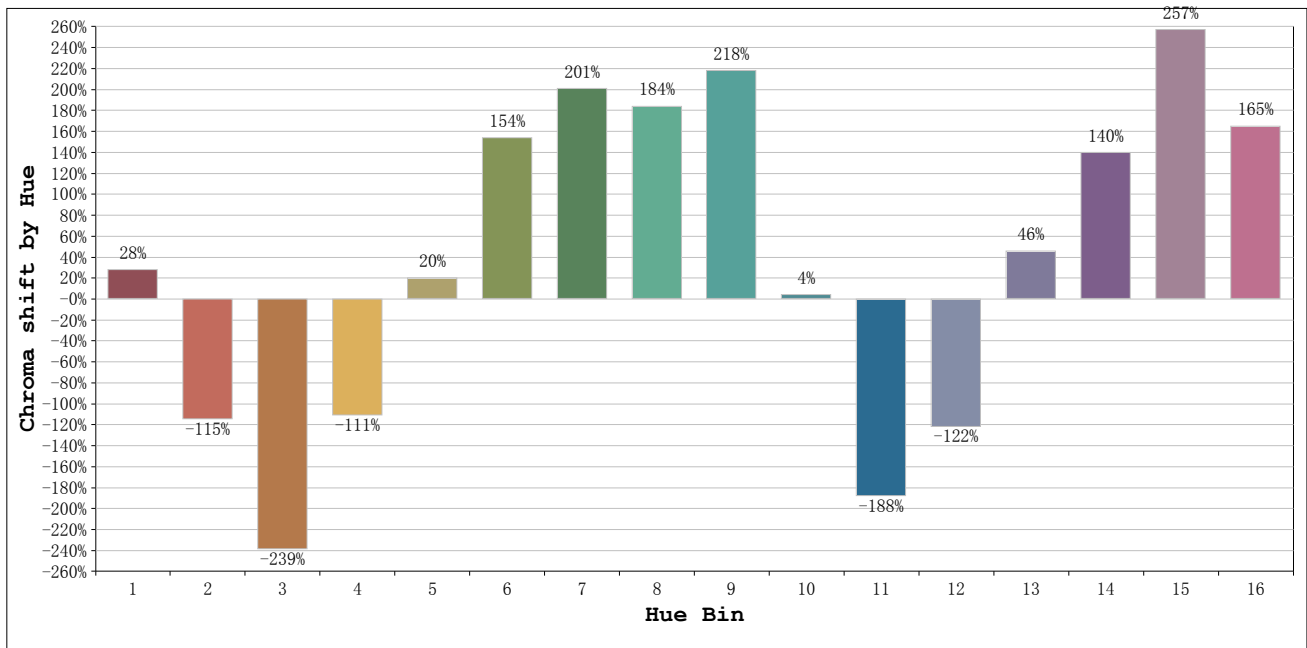
Flux = 58.368 lm Eff. : 11.17 lm/W Fe = 906.16 mW

Electrical parameters

V = 24.00 V I = 0.2178 A P = 5.227 W PF = 1.000 F=0.00 Hz

Rf: 0 CCT: 100000 K u': 0.1606
 Rg: -104 Duv: 0.1682 v': 0.1484





Hue Bin	Hue Angle	Rf	Graphic shift(%)	
			Chroma	Hue
1	0.0° - 22.5°	0	28	-69
2	22.5° - 45.0°	0	-115	-23
3	45.0° - 67.5°	0	-239	285
4	67.5° - 90.0°	0	-111	318
5	90.0° - 112.5°	0	20	301
6	112.5° - 135.0°	0	154	248
7	135.0° - 157.5°	0	201	120
8	157.5° - 180.0°	0	184	-12
9	180.0° - 202.5°	0	218	-148
10	202.5° - 225.0°	0	4	-118
11	225.0° - 247.5°	0	-188	144
12	247.5° - 270.0°	0	-122	353
13	270.0° - 292.5°	0	46	418
14	292.5° - 315.0°	0	140	257
15	315.0° - 337.5°	0	257	160
16	337.5° - 360.0°	0	165	-16