

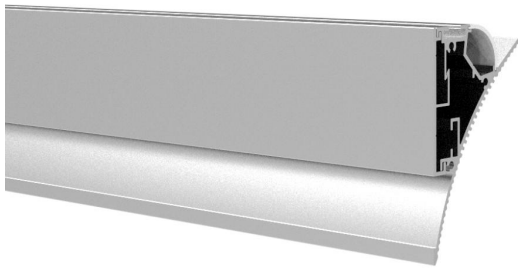
Specification

Architecture lighting integration series

LG7043

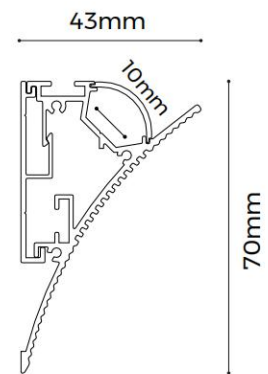


LG7043






Features



- Apply to gypsum lines, integrated into architecture.
- Arc cover design, wider luminous surface.
- Detachable clasp design, easy to install
- AL6063-T5 aluminum profile with high-quality surface treatment.



Standard Configuration

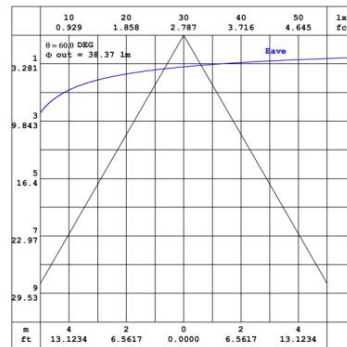
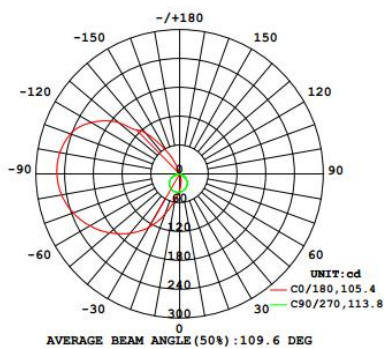
Picture	Item	Parameter
	Profile and pendant	Profile weight : 1.63kg/2.5m Pendant weight : 0.53kg/2.5m Profile Size : L2500*W41.6*H70mm Pendant Size : L2500*W7.5*H43.5mm Material : AL6063-T5 Surface processing : Anodizing
	Cover	Type: Frosted diffuser Material : PC Light transmittance : 70% Size : L2500*W18.9*H6.5mm PC Feature : The diffuser will extend (shrink) 0.8mm/m when the temperature rises (drops) 10°C.
	End caps	Size : L70*W43*H2mm Material : AL

Optional Accessories

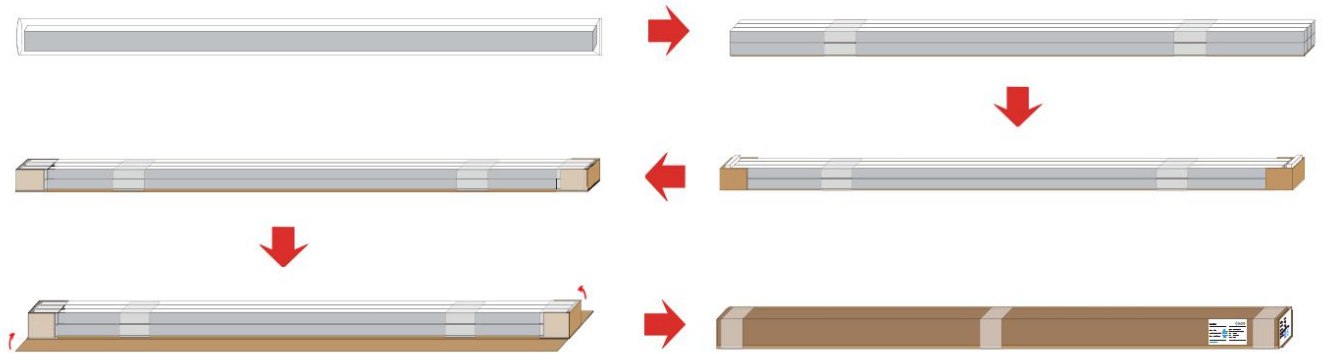
Picture	Item	Parameter
	Flexible strip D8120-24V-8mm	Material :FPC,CCT:1900/2300/2700/3000/3500/4000/5000/6000K ; CRI > 90/>95 ;Voltage :24V ;Power :13.5W/m ;Lumen :1320lm/m ; Width : 8mm ; Minimum cutting unit : 6LEDs/50mm ;
	Screw	Size : M3.5*40mm Material : Carbon steel

Optical Parameter

(D8120-24V-8mm light source, frosted diffuser)



Package



Item	Type	Size(mm)	NW(kg)	GW(kg)	Content
Profile and cover	Packing box	2580*200*175mm	24.66	27.66	12pcs/box