

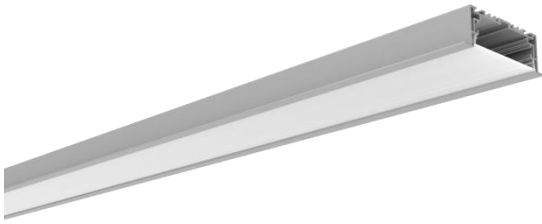
# Specification

Linear lighting system

LE9435

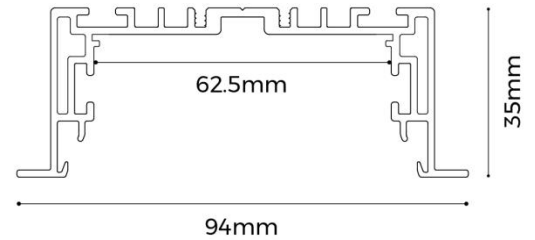


## LE9435

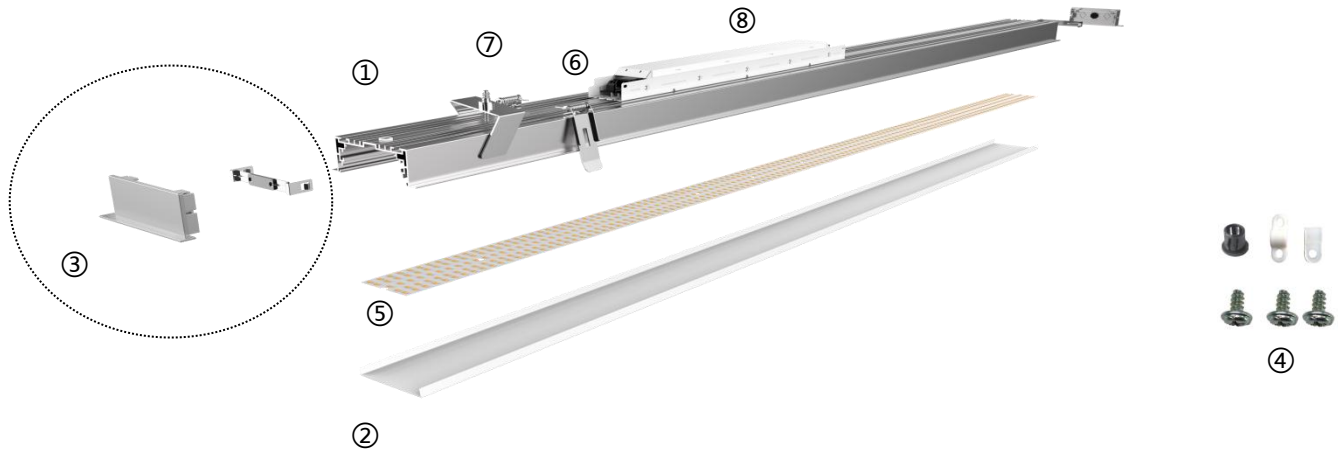


### Features





- Creative magnetic end cap, connect in seconds
- Designed in anti-leaky block piece , perfect details
- PC diffuser imported form Germany , producing homogeneous & soft lighting
- Provide standard extenders , customizable interconnected corners
- Recessed installation with two optional accessories of N-shaped buckle and butterfly clip
- Winner of IF Design Awards 2016



## Details


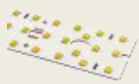






## Standard Configuration








Picture	Item	Parameter
	① Profile	Profile weight : 1.3kg/2.5m Size : L2500*W94*H35mm Material : AL6063-T5 Surface processing : Anodizing
	② Cover	Type: Frosted diffuser Material : PC Light transmittance : 86% Size : L2500*W72.3*H10mm PC Feature : The diffuser will extend (shrink) 0.8mm/m when the temperature raises (drops) 10°C.
	③ End cap	Model : EC-LE9435FSS Size : L94*W35*H18mm
	④ Cable clip	Model : BG-03



## Optional Accessories

Picture	Item	Parameter
	⑤Flexible strip D8420-24V-59mm	Material : FPC,CCT:1900/2300/2700/3000/3500/4000/5000/6000K ; CRI > 80/>95 ; Voltage : 24V ; Power : 30W/m ; Lumen : 3900Lm/m ; Width : 59mm ; Minimum cutting unit : 21LEDs/50mm ;
	⑤Rigid modular DY8420-24V-62mm	Material : FR4,CCT:1900/2300/2700/3000/3500/4000/5000/6000K ; CRI > 80/>95 ; Voltage : 24V ; Power : 30W/m ; Lumen : 3900Lm/m ; Width : 62mm ; Minimum cutting unit : 21LEDs/50mm ;
	⑥Recessed buckle (Butterfly clips)	Model : RB-02 Size : L68.5*W35*H31.6mm
	⑦Recessed buckle (N-shaped)	Model : RN-06 Size : L96*W84*H39.5mm
	⑧Power supply	Model : BSD-V24-100S Size : L373*W39*H27mm
	Reflective paper	Model : BG-12 Size : L15000*W11.5*H0.075mm

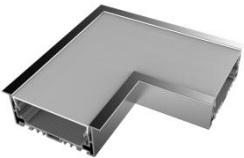
## Corner fittings

EX-E6 (7-type 120°)	EX-E7 (7-type 60°)	EX-E8 (L-type 120°)	EX-E9 (Y-type 120°)
			
EX-E10 (L-type 60°)	EX-E11 (X-type 60°+120°)	EX-E12 (T-type 60°+120°)	
			



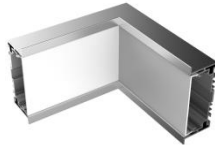
## Corners

L-type corner (L90- LE9435)



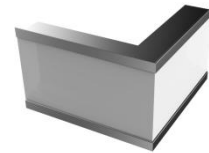
Al6063-T5&PC  
6W  
L157\*W157\*H35mm

L-type inner corner(L90N- LE9435)



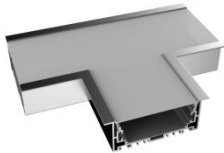
Al6063-T5&PC  
6W  
L150\*W150\*H94mm

L-type exterior corner(L90W- LE9435)



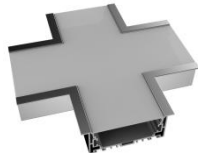
Al6063-T5&PC  
8.6W  
L150\*W150\*H94mm

T-type corner(T90- LE9435)



Al6063-T5&PC  
7.6W  
L200\*W157\*H35mm

X-type corner(X90- LE9435)



Al6063-T5&PC  
10.1W  
L200\*W200\*H35mm

180° extender

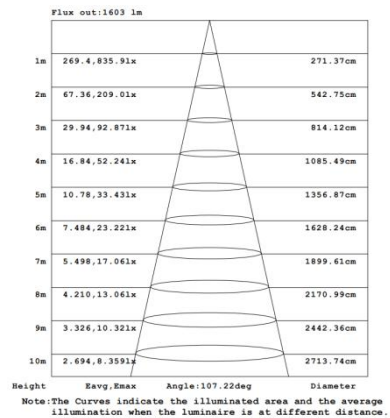
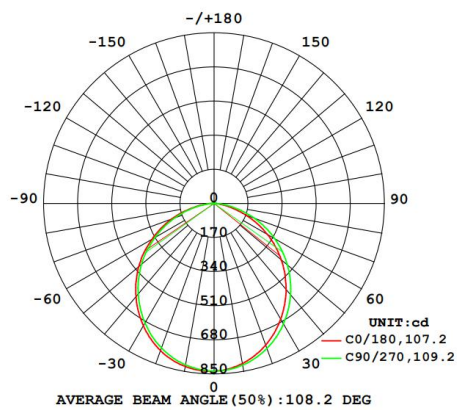


SPCC  
silver  
L80\*W10\*H2mm

\* The corners NO light source.

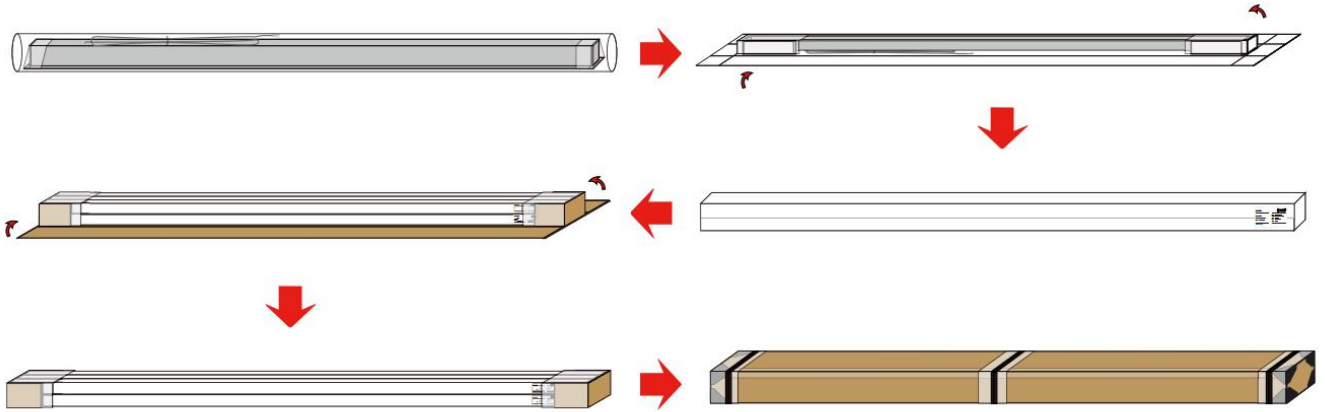
## Optical Parameter

D8420-24V-59mm light source, frosted diffuser

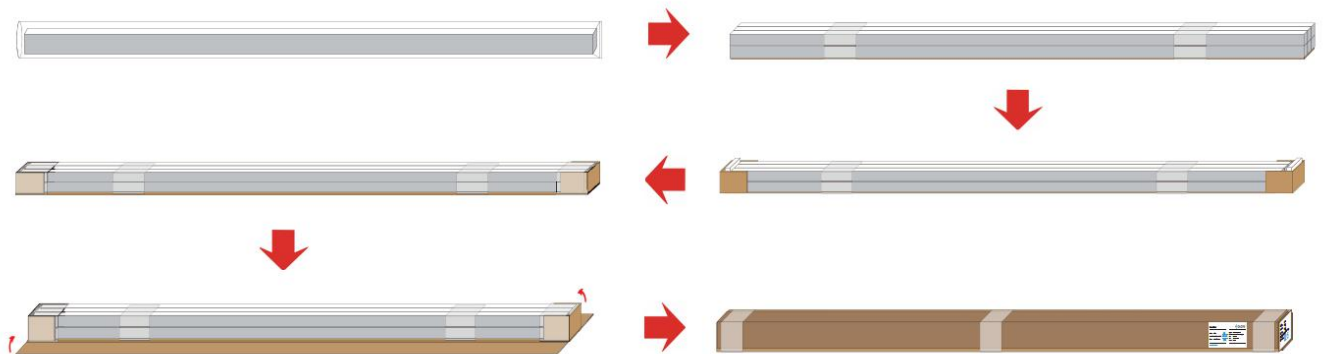


## Package

Mode 1 :



Mode 2 :



Components	Packaging material	Size(mm)	NW(kg)	GW(kg)	Content
Single piece	Hat box	2560*124*61mm	3.31	3.81	1pcs/box
Whole bundle	Hat box	2580*277*207mm	19.86	22.86	6pcs/box
Whole box packaging	Paper box	2580*231*168mm	26.48	29.48	8pcs/box

