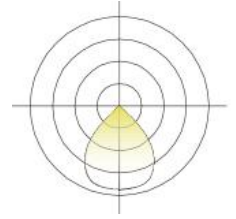


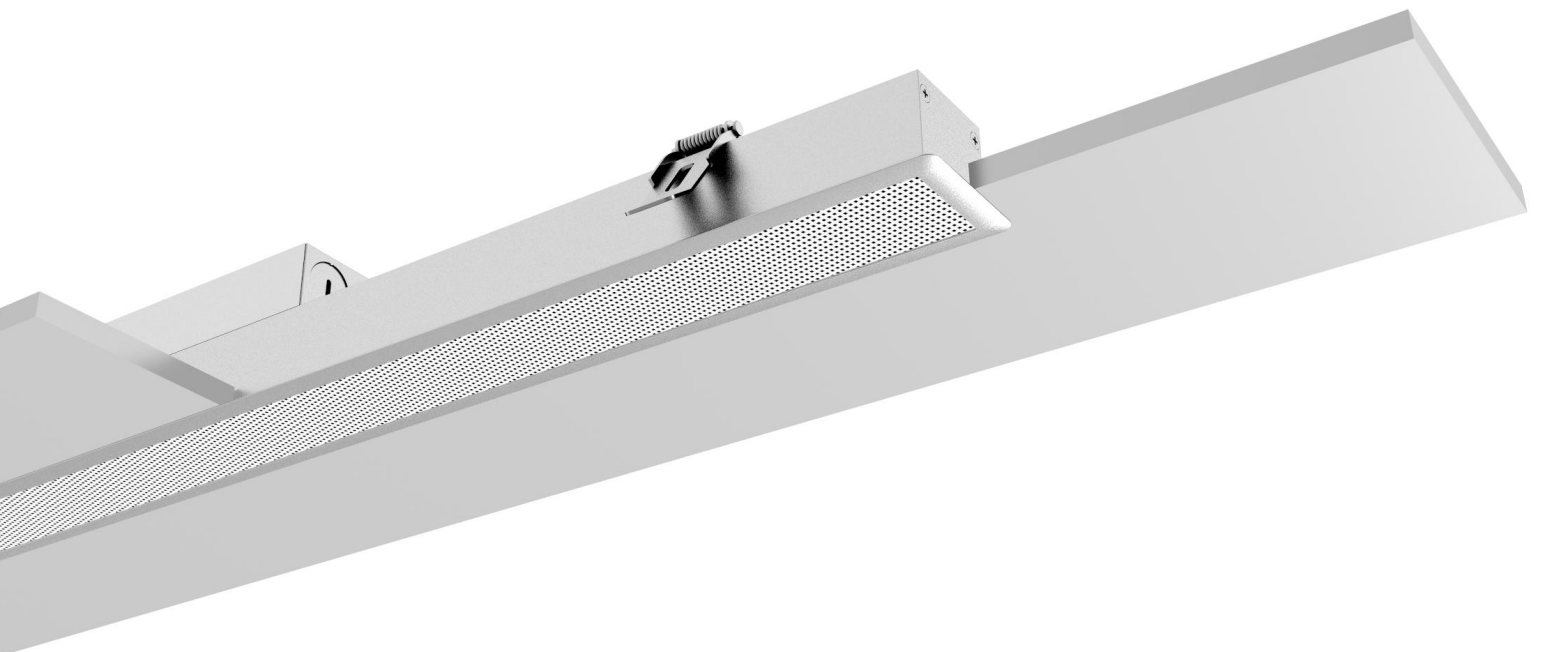
GLS40



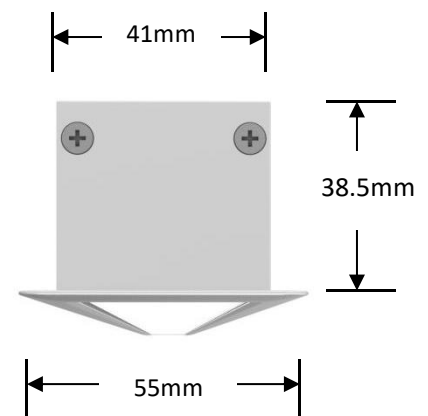
LE40FP



LE40 is a combination of elegant appearance and structure design, innovative light and heat design, new material and new technology and intelligent control technology. A professional lamp can be widely used in the main lighting of indoor space.



- AL6063-T5 aluminum profile with high-quality surface treatment;
- LM80 certified light source, life > 50000h;
- Built-in efficient and safe flicker-free dimming power supply, Support 0-10V dimming or Dali dimming
- Recessed (with trim) installation.
- Prismatic Diffuse design.



Optical & electronic data:

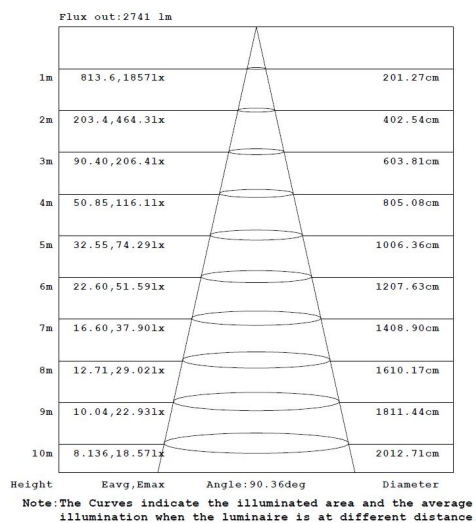
Model	Size	CCT	Flux (lm)	CRI	Beam angle	Input voltage	Dimming	PF	Power (w)	Efficiency (lm/w)
GLS-LE40FPXBS1200-T38NW8B-DC	1160mm	3000K	3800lm	>80	90°	200~240VAC 50Hz/60Hz	0-10V	>0.9	38W	100
		3500K	3870lm							102
		4000K	3950lm							104
GLS-LE40FPXBS1500-T48NW8B-DC	1445mm	3000K	4740lm	>80	90°	200~240VAC 50Hz/60Hz	0-10V	>0.9	48W	99
		3500K	4840lm							101
		4000K	4940lm							103
GLS-LE40FPXBS1800-T56NW8B-DC	1730mm	3000K	5700lm	>80	90°	200~240VAC 50Hz/60Hz	0-10V	>0.9	56W	102
		3500K	5810lm							104
		4000K	5930lm							106
GLS-LE40FPXWS2300-T76NW8B-DC	2300mm	3000K	7590lm	>80	90°	200~240VAC 50Hz/60Hz	0-10V	>0.9	76W	102
		3500K	7740lm							104
		4000K	7900lm							107

Remark:

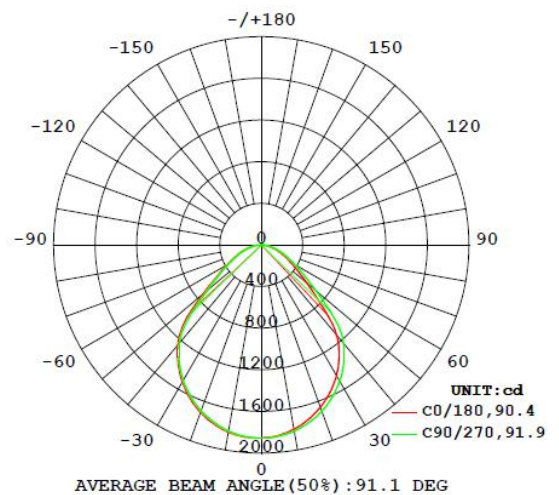
- 1、the output data is based on the testing result of 1165mm luminaires ;
- 2、the tolerance of output data can be vary up to 10%;
- 3、the output data is typical value;

◆luminaire with Prismatic Diffuse (GLS-LE40FP)

AAI Figure



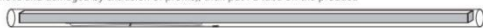
Luminous intensity distribution diagram



Packing:

◆The whole package

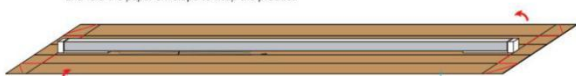
1.Tightly wrap and fix the magnetic endcaps and profiles with winding film (in order to prevent the plastic endcaps move and damaged by extrusion of profile), then put PE tube on the product.



2.The back of the product is placed on a 15 mm thick EPE FOAM, and with 22 mm thick EPE FOAMs at both ends, then stick EPE FOAM on the side, bundled with wrapping film;



3.Put the back of the product facing down on the W9K paper envelope with 3 mm thickness, and fold the paper envelope to wrap the product.



4.After the product is wrapped, the edge is sealed with adhesive paper and the product information labels are affixed.



5.Put the white boxes packed with products in bundles according to the standard quantity and requirement. Add K = K paper sheath at both ends, then bundle them with wrapping film at both ends.



6.Pack the bundled products on K = K cardboard after indentation cutting.



7.Sealing box with plastic corner guard, wrapping with film, then wrapping with packaging tape.




8.Labeling (COLORS Label, Quantity, Net Weight, Gross Weight Labels, Box Seal)



Model	Type	Demension (individual package)	Pcs /bundle	NW (Kg)	GW (Kg)	Demension (whole package)	CBM (m³)
GLS-LE40FPXBS1200-T38XX8B-DC	Individual Packing	1240*116*105mm	6	12	16.7	1260*272*235mm	0.08
GLS-LE40FPXBS1500-T48XX8B-DC		1540*116*105mm	6	15	20.1	1560*272*235mm	0.1
GLS-LE40FPXBS1800-T56XX8B-DC		1840*116*105mm	6	18	24	1860*272*235mm	0.12
GLS-LE40FPXWS2300-T76XX8B-DC		2440*116*105mm	6	24	32	2460*272*235mm	0.16

◆ Description about label information

GLS-LE40			
Luminous flux: 3500 LM Power(Typ): 38W CCT: 4000K CRI: >80 Input voltage: 200~240 VAC Frequency: 50/60Hz		Type: Luminaire Part NO: GLS-LE40FDXWS1200-T38NW8B-DC SO: YO17050147 NO: ZWL170510-0380 Color: White Power factor: >0.95 Cover type: Diffuser Size: 41x38.5x1146mm Date: 20200601	
www.colorsled.com			



Ordering code:

Category	Installation	Section Size	Diffuser Shape	Diffuser Nature	Carrier Style	Profile Color	End Cap Style	Length	-Light Source Type	Type Power of Luminaire	CCT	CRI	Power Type	Package	Label Type
GLS40	Recessed	40 Series	Flat	Prismatic Diffuser	No	White	Standard End Cap	1160mm	-Constant Current Rigid	38W	3000K	CRI>80	0-10V	Individual Packing	COLORS
GLS	LE	40	F	P	X	W	S	1200	T	38	WW	80	B	-D	C
						1445mm		48W		3500K					
						Black		1500		48	PW		DALI		Customized
						B		1730mm		56W	4000K				
						1800		56		NW	A		S		
						Silver		2300mm							72W
						S		2300							72
GLS	-LE	40	F	P	X	W	S	1200	-T	38	NW	8	B	-D	C

Attentions:

- ◆ Please install the product in the right environment as much as possible;
- ◆ Please be careful during operation. Do not touch the AC power supply in case of electric shock;
- ◆ Check the current through the circuit, such as the surge occurs when press the switch does not exceed the maximum rated current, please insert the appropriate protection circuit;
- ◆ This product is sensitive to static electricity, and please special attention. In particular, it will damage the product when the static electricity is more than absolute maximum rated current and voltage, please make a countermeasures to avoid the damage of the static electricity and surge when using the product.

