

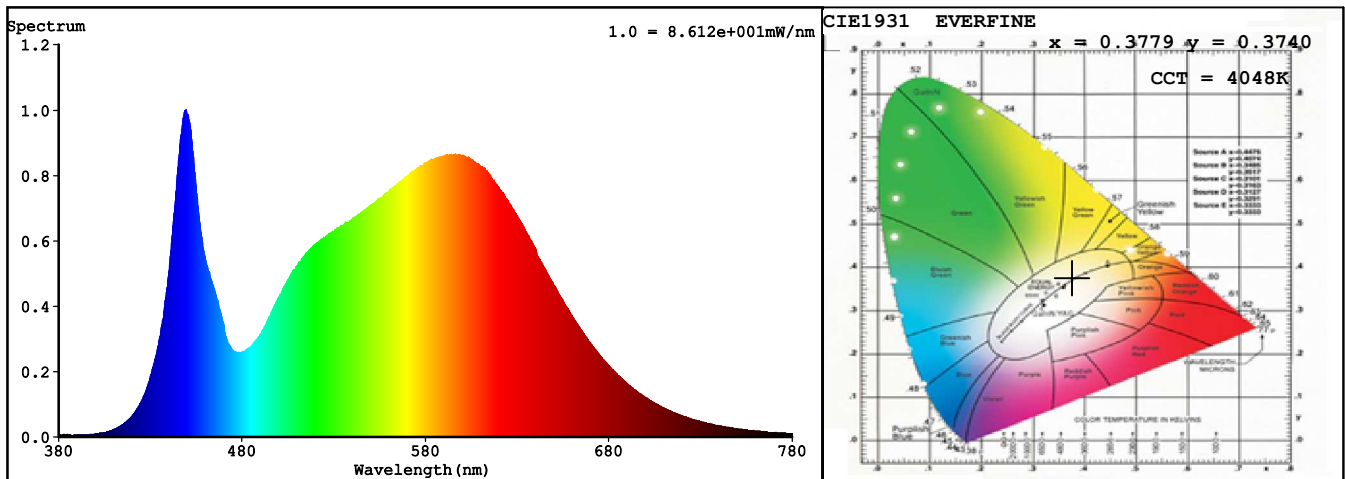
Spectrum Test Report

Sample	: DS8256-24V-12mm	Date	: 2019-03-09
Specification	: DS82562412NO-8NWSDA012WC0100	Sam. Status	: 1M
Sample No.	: 1	Standard	:
Manufacturer	: COLORS	Instrument	: HaasSuite(EVERFINE)
Remark	: H2-35-L2-60	Test by	: LYH

Test Condition

Temperature	: 25.3Deg	RH	: 65.0%
WL Range	: 380nm-780nm	IP	: 53452 (82%)
Test Mode	: Accuracy Test	T	: 37 ms
Sensitivity	: High		

Spectrum



Colorimetric Parameters

Chromaticity Coordinate: $x = 0.3779$ $y = 0.3740$ / $u' = 0.2246$ $v' = 0.5000$ ($duv = -5.64e-04$)
 CCT= 4048K Prcp WL: $L_d = 579.2nm$ Purity=25.6%
 Peak WL: $L_p = 449nm$ FWHM: =22.4nm Ratio:R=18.4% G=78.0% B=3.6%

Render Index: $R_a = 84.0$ TM30: $R_f = 83$ $R_g = 97$

R1 =83 R2 =89 R3 =94 R4 =84 R5 =83 R6 =85 R7 =87
 R8 =68 R9 =16 R10=75 R11=83 R12=65 R13=84 R14=97 R15=77

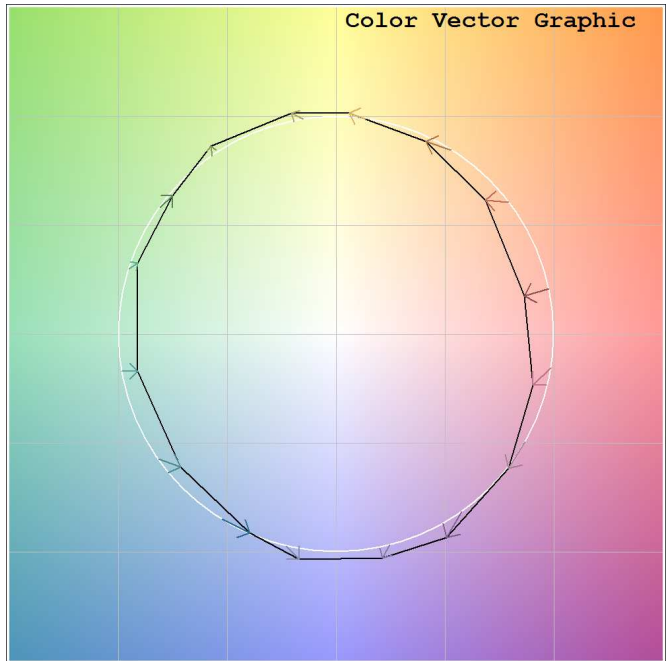
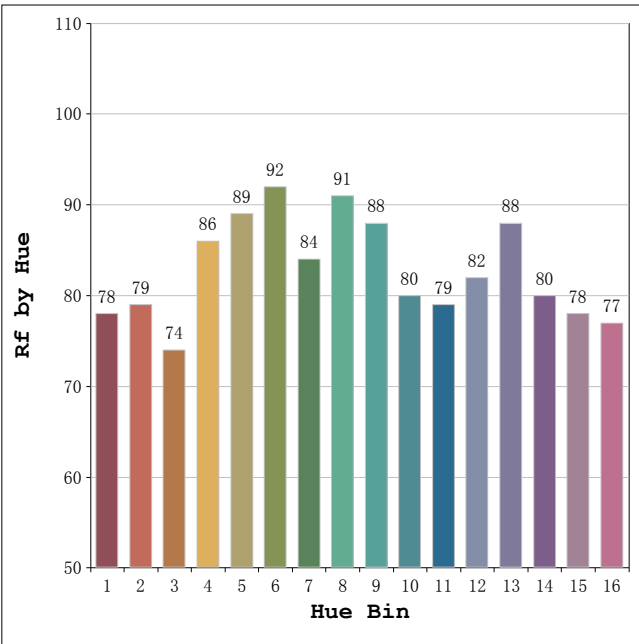
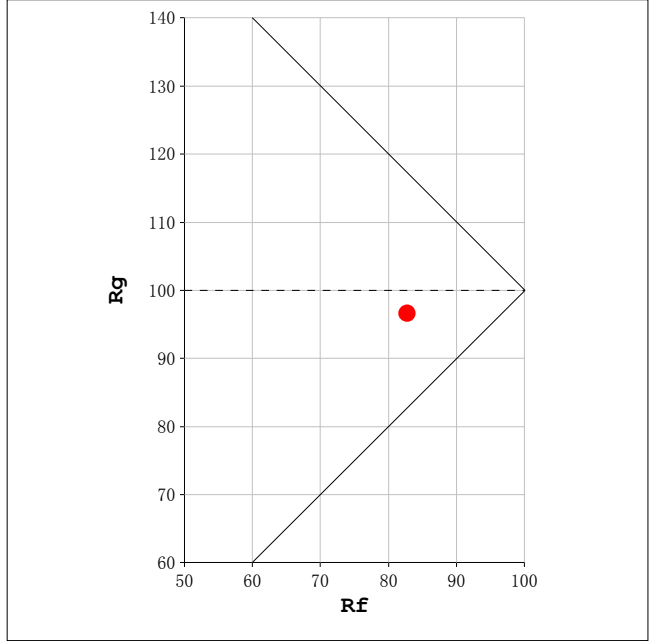
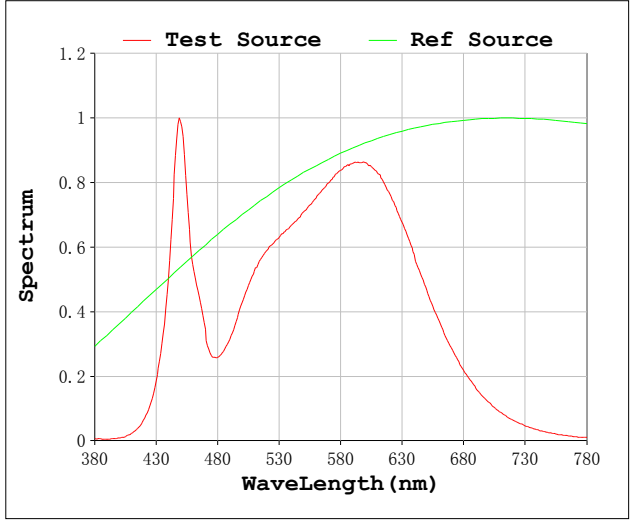
Photometric & Radiometric Parameters

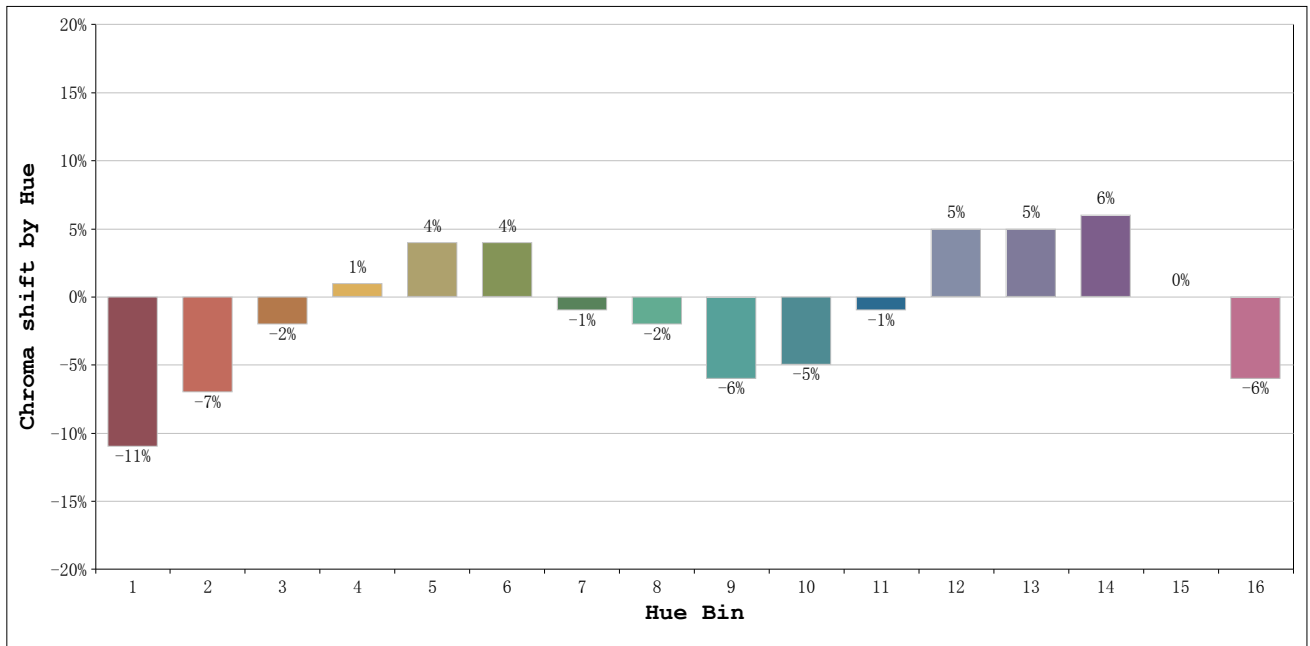
Flux = 4383.2 lm Eff. : 141.14 lm/W Fe = 13.527 W

Electrical parameters

V = 24.00 V I = 1.294 A P = 31.06 W PF = 1.000 F=0.00 Hz

Rf: 83 CCT: 4048 K u': 0.2246
 Rg: 97 Duv: -0.0006 v': 0.5000





Hue Bin	Hue Angle	Rf	Graphic shift(%)	
			Chroma	Hue
1	0.0° - 22.5°	78	-11	0
2	22.5° - 45.0°	79	-7	6
3	45.0° - 67.5°	74	-2	12
4	67.5° - 90.0°	86	1	8
5	90.0° - 112.5°	89	4	5
6	112.5° - 135.0°	92	4	-1
7	135.0° - 157.5°	84	-1	-7
8	157.5° - 180.0°	91	-2	-2
9	180.0° - 202.5°	88	-6	1
10	202.5° - 225.0°	80	-5	9
11	225.0° - 247.5°	79	-1	14
12	247.5° - 270.0°	82	5	7
13	270.0° - 292.5°	88	5	-3
14	292.5° - 315.0°	80	6	-11
15	315.0° - 337.5°	78	0	-13
16	337.5° - 360.0°	77	-6	-8