

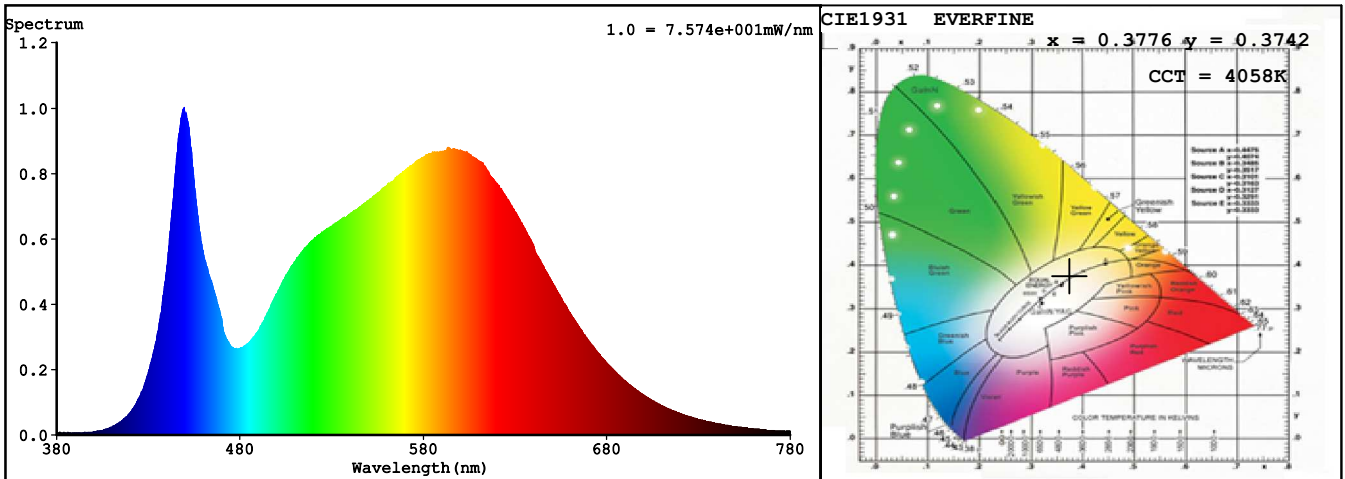
## Spectrum Test Report

Sample : DS81922412NO	Date : 2019-03-14
Specification : DS81922412NO-8NWSDA012WC0100	Sam. Status : 1M
Sample No. : 1	Standard :
Manufacturer : COLORS	Instrument : HaasSuite(EVERFINE)
Remark :	Test by : JYH

### Test Condition

Temperature : 25.3Deg	RH : 65.0%
WL Range : 380nm-780nm	IP : 48923 (75%)
Test Mode : Accuracy Test	T : 38 ms
Sensitivity : High	

### Spectrum



### Colorimetric Parameters

Chromaticity Coordinate:  $x = 0.3776$   $y = 0.3742$  /  $u' = 0.2243$   $v' = 0.5000$  ( $duv = -3.90e-04$ )  
 CCT= 4058K Prcp WL:  $L_d = 579.1nm$  Purity=25.6%  
 Peak WL:  $L_p = 449nm$  FWHM: =23.2nm Ratio:R=18.3% G=78.0% B=3.6%

Render Index:  $R_a = 83.9$  TM30:Rf=83 Rg=96

R1 =82 R2 =89 R3 =94 R4 =83 R5 =83 R6 =85 R7 =87  
 R8 =67 R9 =15 R10=74 R11=82 R12=65 R13=84 R14=97 R15=77  
 LEVEL:OUT WHITE:ANSI\_4000K

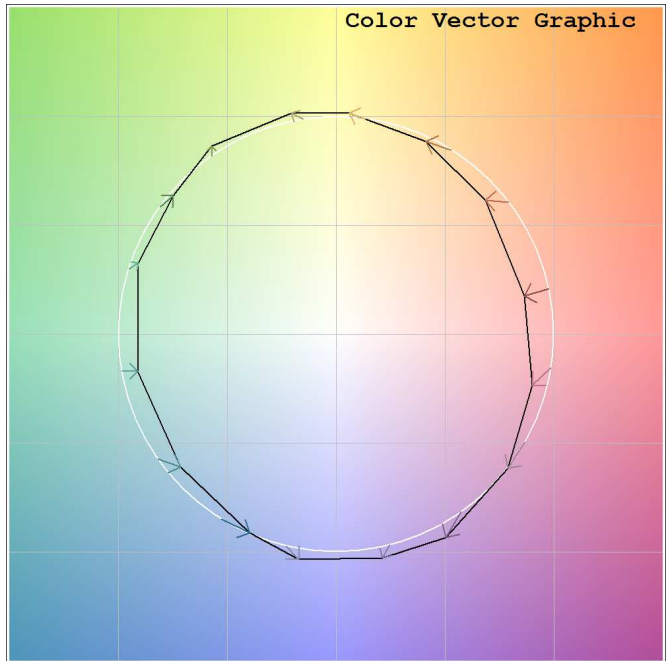
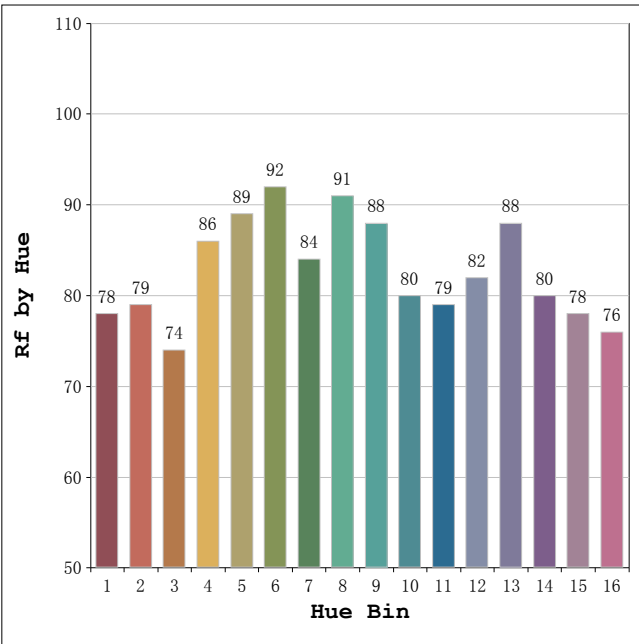
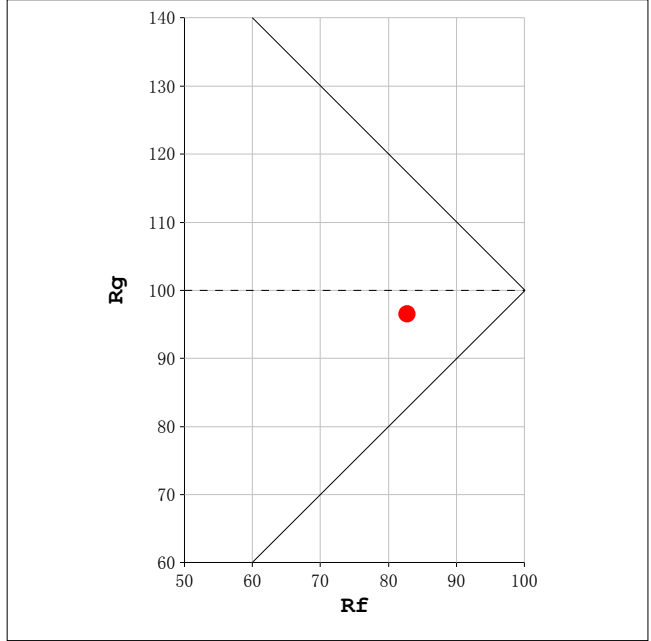
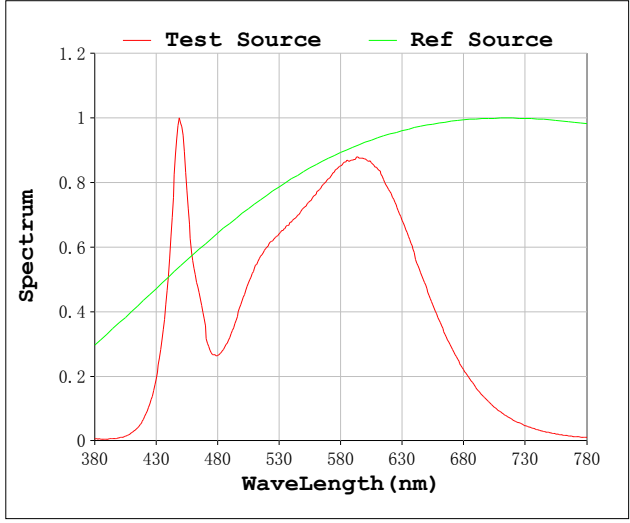
### Photometric & Radiometric Parameters

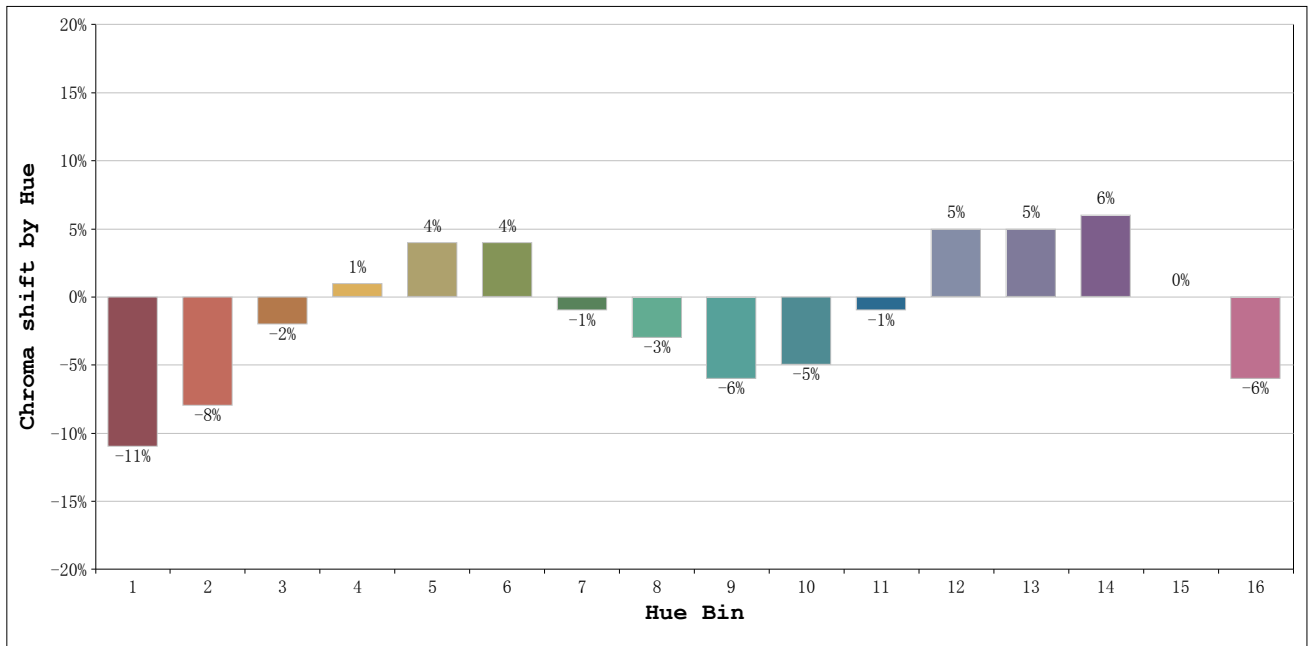
Flux = 3912.7 lm Eff. : 148.21 lm/W Fe = 12.068 W

### Electrical parameters

V = 24.00 V I = 1.100 A P = 26.40 W PF = 1.000 F=0.00 Hz

Rf: 83      CCT: 4058 K      u': 0.2243  
 Rg: 96      Duv: -0.0004      v': 0.5000





Hue Bin	Hue Angle	Rf	Graphic shift(%)	
			Chroma	Hue
1	0.0° - 22.5°	78	-11	0
2	22.5° - 45.0°	79	-8	6
3	45.0° - 67.5°	74	-2	12
4	67.5° - 90.0°	86	1	8
5	90.0° - 112.5°	89	4	5
6	112.5° - 135.0°	92	4	-1
7	135.0° - 157.5°	84	-1	-7
8	157.5° - 180.0°	91	-3	-2
9	180.0° - 202.5°	88	-6	1
10	202.5° - 225.0°	80	-5	9
11	225.0° - 247.5°	79	-1	14
12	247.5° - 270.0°	82	5	7
13	270.0° - 292.5°	88	5	-3
14	292.5° - 315.0°	80	6	-11
15	315.0° - 337.5°	78	0	-14
16	337.5° - 360.0°	76	-6	-8