

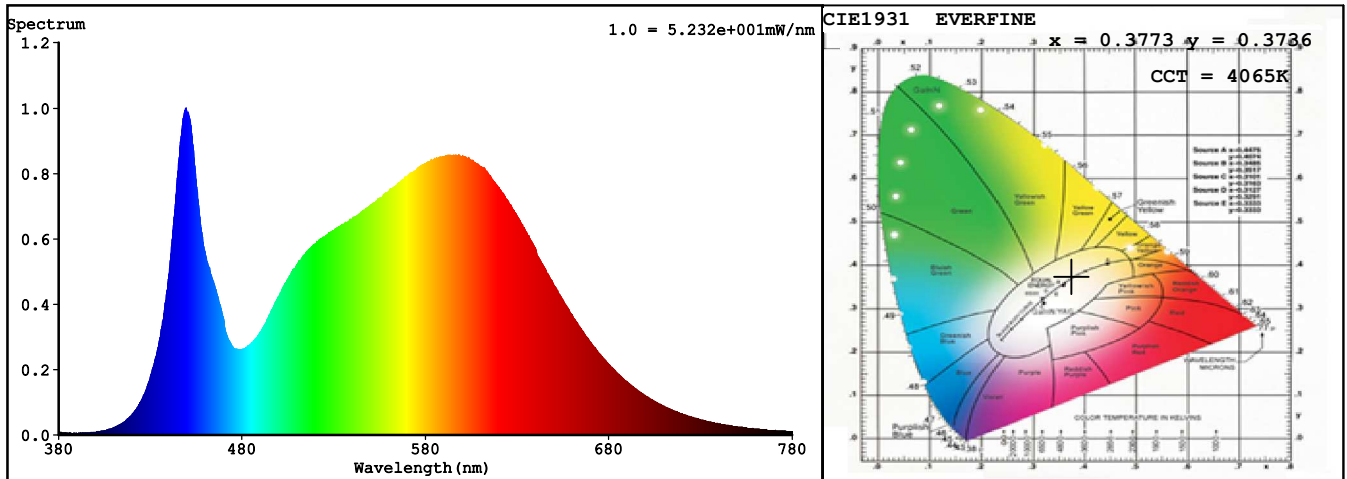
Spectrum Test Report

Sample : DS8160-24V-10mm	Date : 2019-03-09
Specification : DS81602410NO-8NWSDA012WC0100	Sam. Status : 1M
Sample No. : 1	Standard :
Manufacturer : COLORS	Instrument : HaasSuite(EVERFINE)
Remark : H2-35-L2-60	Test by : LYH

Test Condition

Temperature : 25.3Deg	RH : 65.0%
WL Range : 380nm-780nm	IP : 50566 (77%)
Test Mode : Accuracy Test	T : 58 ms
Sensitivity : High	

Spectrum



Colorimetric Parameters

Chromaticity Coordinate: $x = 0.3773$ $y = 0.3736$ / $u' = 0.2243$ $v' = 0.4997$ ($duv = -5.40e-04$)
 CCT= 4065K Prcp WL: $L_d = 579.1\text{nm}$ Purity=25.3%
 Peak WL: $L_p = 449\text{nm}$ FWHM: =22.5nm Ratio:R=18.3% G=78.0% B=3.7%

Render Index: $R_a = 84.2$ TM30:Rf=83 Rg=96

R1 =83 R2 =90 R3 =94 R4 =84 R5 =83 R6 =85 R7 =87
 R8 =68 R9 =16 R10=75 R11=83 R12=65 R13=84 R14=97 R15=77

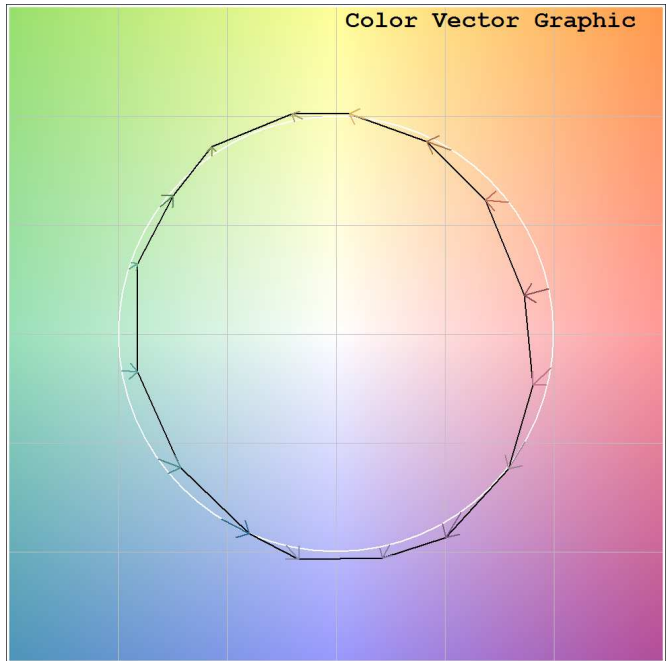
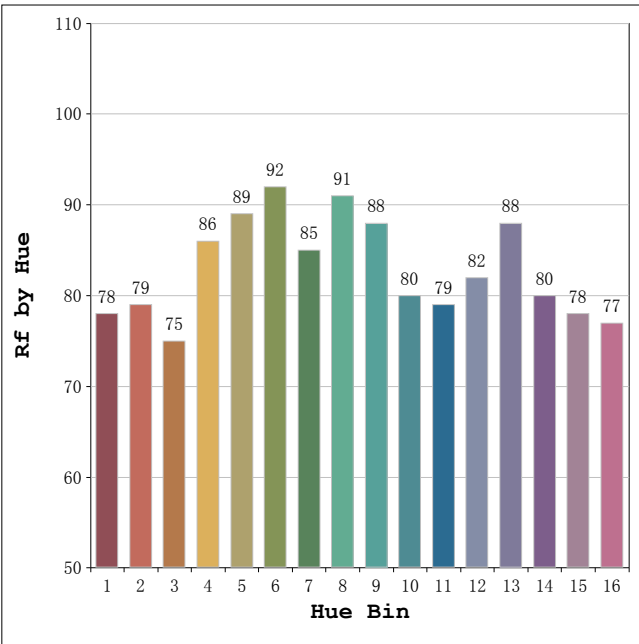
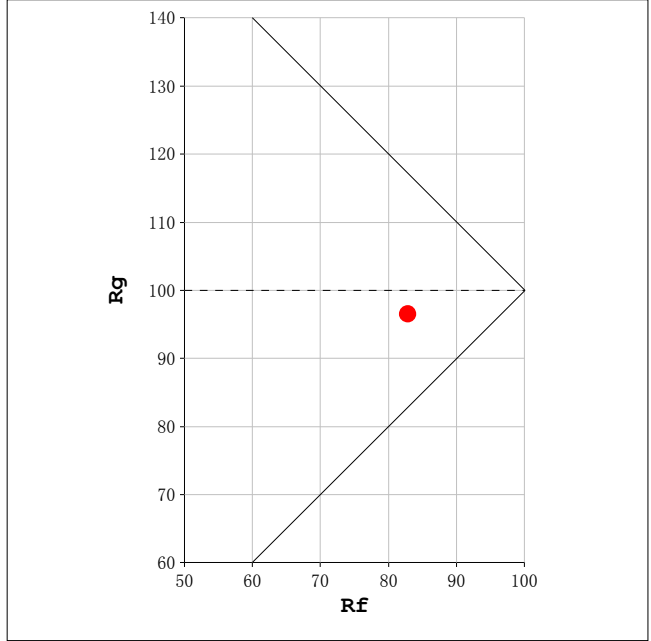
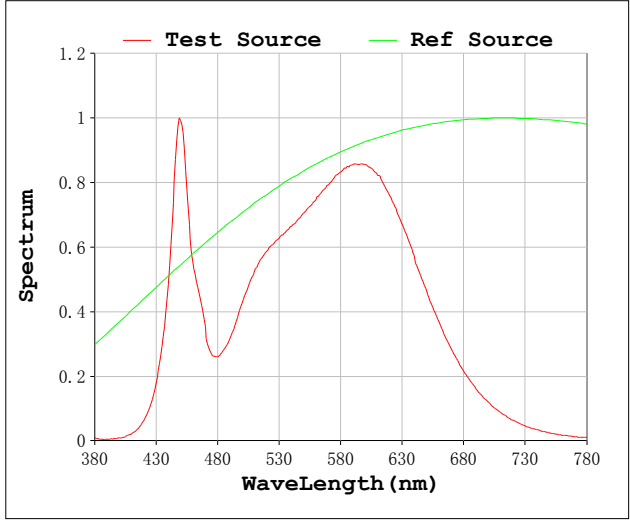
Photometric & Radiometric Parameters

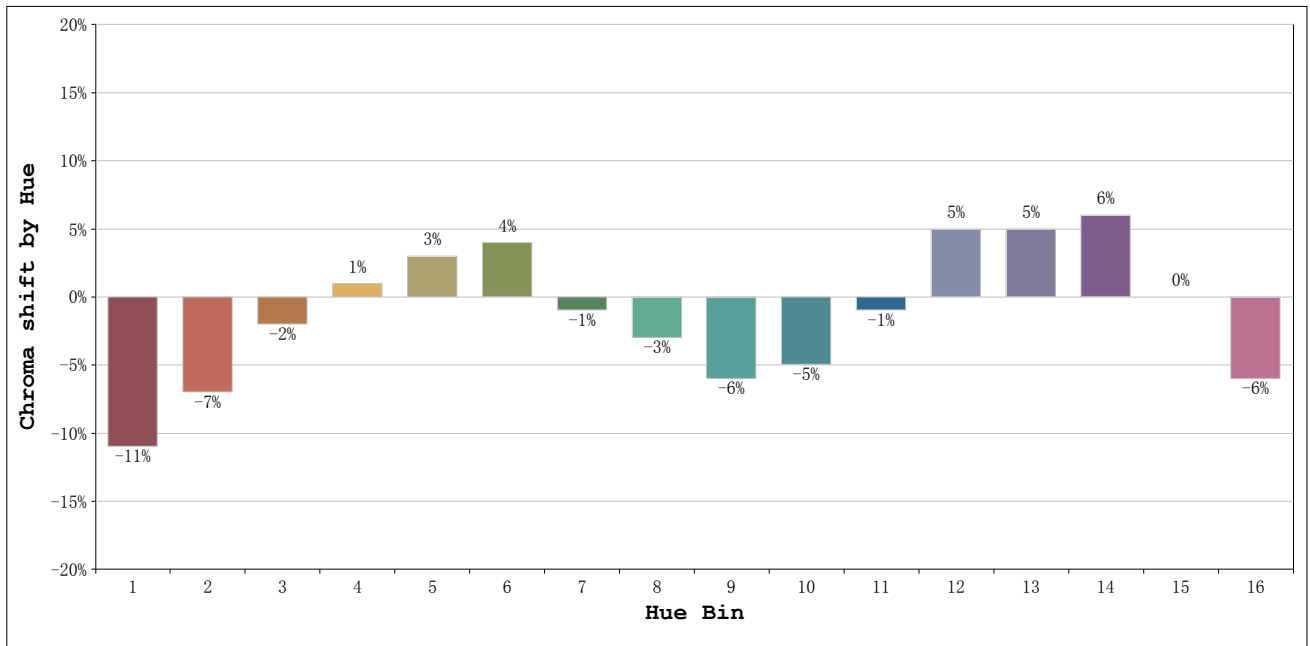
Flux = 2645.8 lm Eff. : 153.11 lm/W Fe = 8.1669 W

Electrical parameters

V = 24.00 V I = 0.7200 A P = 17.28 W PF = 1.000 F=0.00 Hz

Rf: 83 **CCT: 4065 K** **u': 0.2243**
Rg: 96 **Duv: -0.0005** **v': 0.4997**





Hue Bin	Hue Angle	Rf	Graphic shift(%)	
			Chroma	Hue
1	0.0° - 22.5°	78	-11	0
2	22.5° - 45.0°	79	-7	6
3	45.0° - 67.5°	75	-2	12
4	67.5° - 90.0°	86	1	8
5	90.0° - 112.5°	89	3	5
6	112.5° - 135.0°	92	4	-1
7	135.0° - 157.5°	85	-1	-7
8	157.5° - 180.0°	91	-3	-2
9	180.0° - 202.5°	88	-6	2
10	202.5° - 225.0°	80	-5	9
11	225.0° - 247.5°	79	-1	14
12	247.5° - 270.0°	82	5	7
13	270.0° - 292.5°	88	5	-3
14	292.5° - 315.0°	80	6	-11
15	315.0° - 337.5°	78	0	-13
16	337.5° - 360.0°	77	-6	-8