

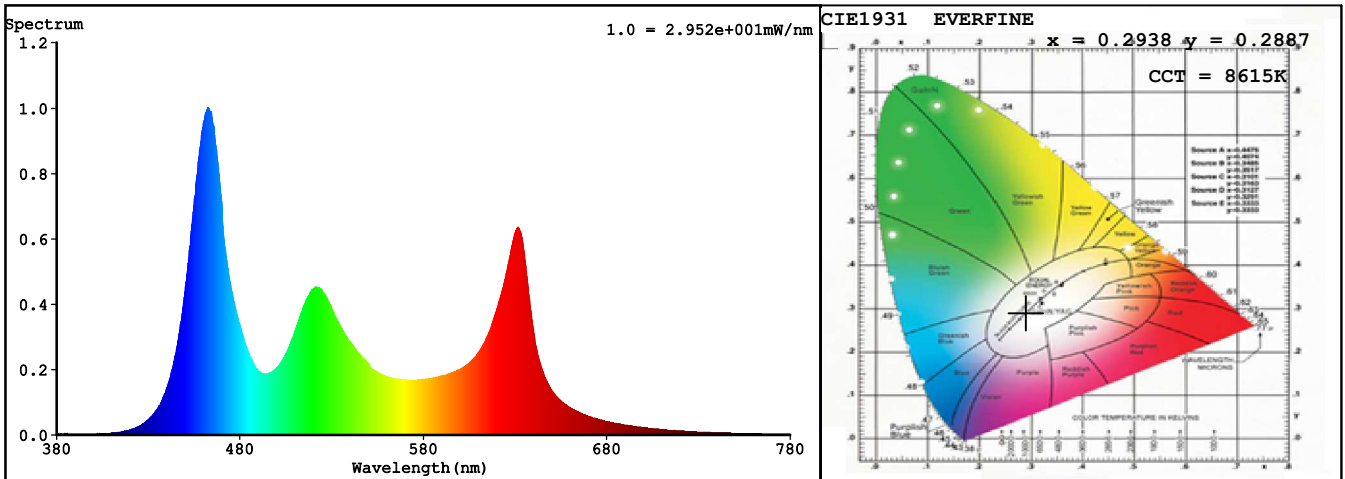
## Spectrum Test Report

Sample : DS5544812NO	Date : 2019-07-17 11:16:58
Specification : DS5544812NO-0RGBNWDA012WC400	Sam. Status : 1M
Sample No. : 1	Standard :
Manufacturer : COLORS	Instrument : HaasSuite(EVERFINE)
Remark : RGBW	Test by : LYH

### Test Condition

Temperature : 25.3Deg	RH : 65.0%
WL Range : 380nm-780nm	IP : 49835 (76%)
Test Mode : Accuracy Test	T : 143 ms
Sensitivity : High	

### Spectrum



### Colorimetric Parameters

Chromaticity Coordinate:  $x = 0.2938$   $y = 0.2887$  /  $u' = 0.2000$   $v' = 0.4421$  ( $duv = -7.98e-03$ )  
 CCT= 8615K Prcp WL:  $L_d = 474.4nm$  Purity=17.8%  
 Peak WL:  $L_p = 463nm$  FWHM: =22.5nm Ratio:R=20.5% G=70.6% B=8.9%

Render Index:  $R_a = 69.1$  TM30:Rf=73 Rg=111

R1 =56 R2 =75 R3 =92 R4 =67 R5 =66 R6 =72 R7 =79  
 R8 =47 R9 =0 R10=49 R11=60 R12=63 R13=58 R14=91 R15=47  
 LEVEL:OUT WHITE:OUT

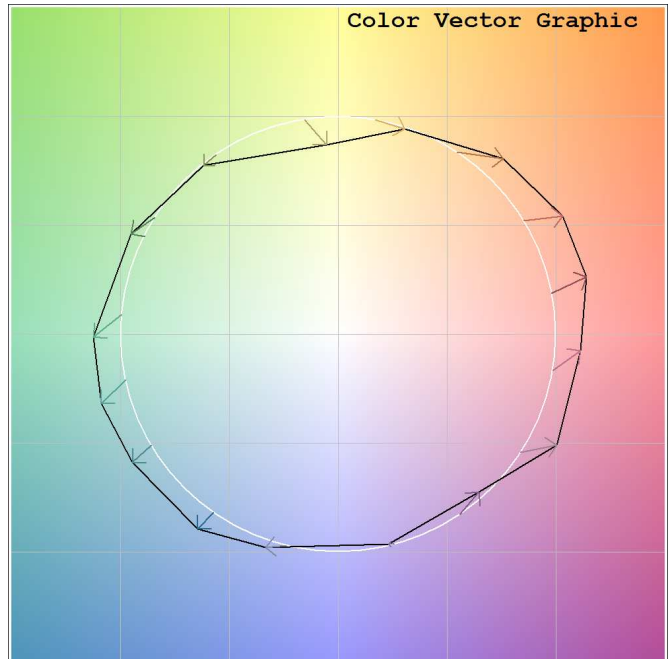
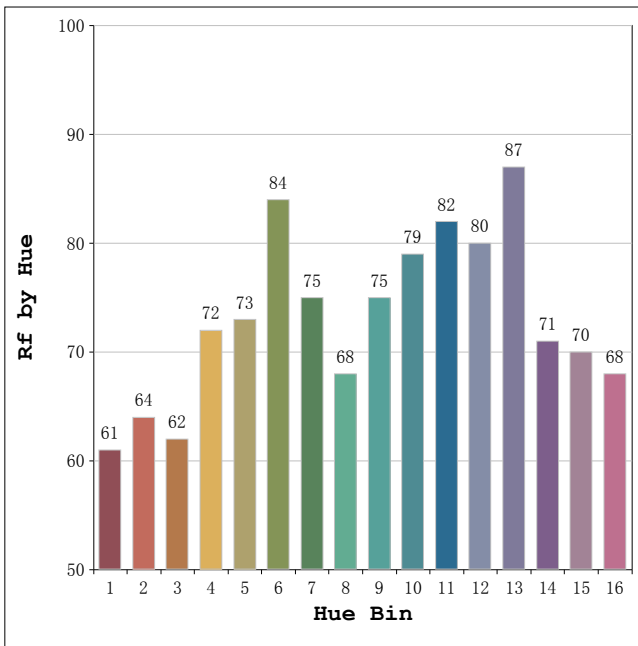
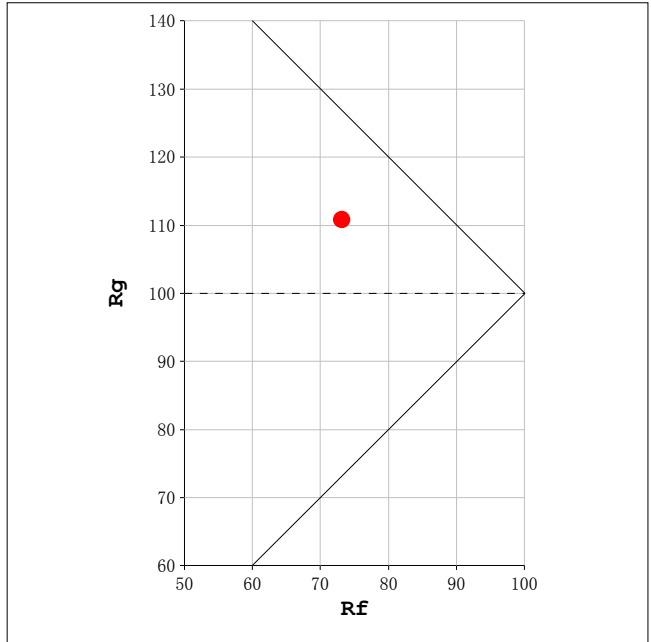
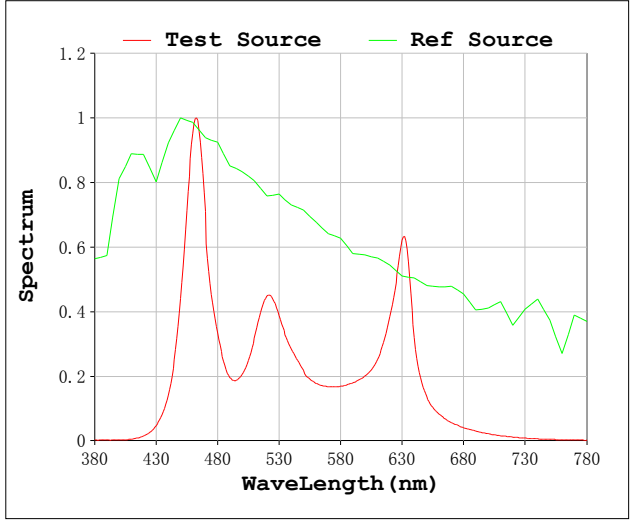
### Photometric & Radiometric Parameters

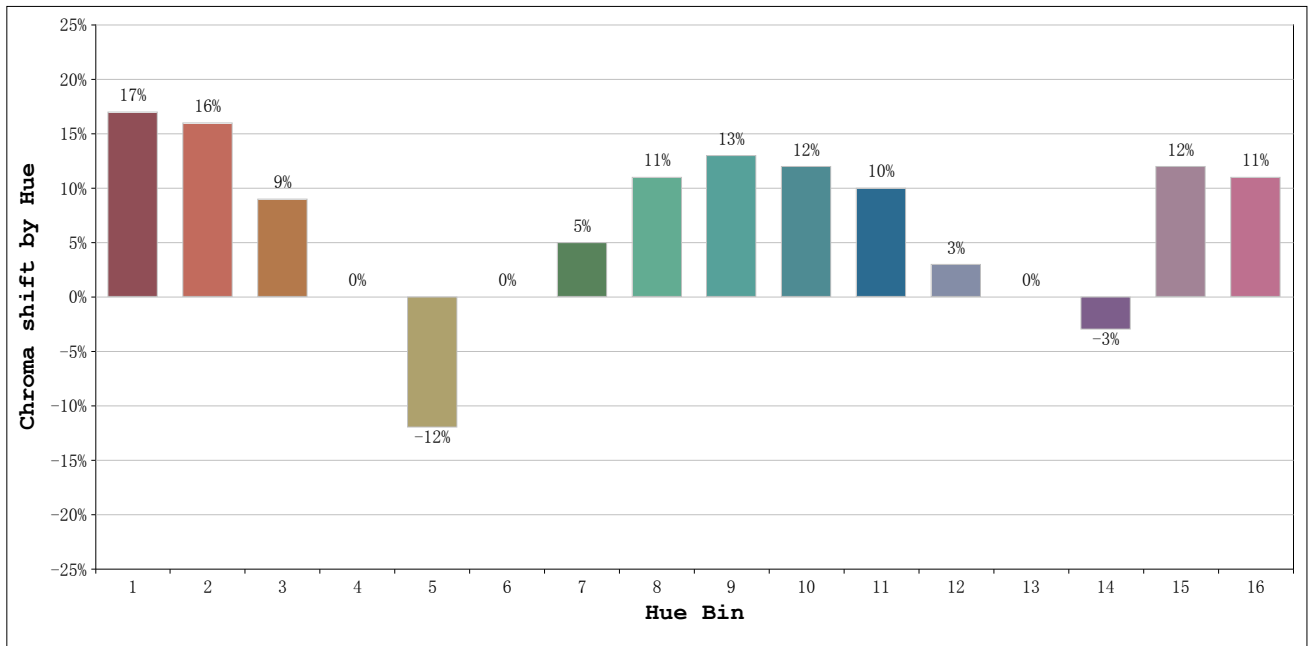
Flux = 576.61 lm Eff. : 42.90 lm/W Fe = 2.2444 W

### Electrical parameters

V = 48.00 V I = 0.2800 A P = 13.44 W PF = 1.000 F=0.00 Hz

Rf: 73      CCT: 8615 K      u': 0.2000  
 Rg: 111     Duv: -0.0080     v': 0.4421





Hue Bin	Hue Angle	Rf	Graphic shift(%)	
			Chroma	Hue
1	0.0° - 22.5°	61	17	4
2	22.5° - 45.0°	64	16	-7
3	45.0° - 67.5°	62	9	-18
4	67.5° - 90.0°	72	0	-13
5	90.0° - 112.5°	73	-12	-7
6	112.5° - 135.0°	84	0	8
7	135.0° - 157.5°	75	5	12
8	157.5° - 180.0°	68	11	13
9	180.0° - 202.5°	75	13	9
10	202.5° - 225.0°	79	12	2
11	225.0° - 247.5°	82	10	-1
12	247.5° - 270.0°	80	3	-8
13	270.0° - 292.5°	87	0	-2
14	292.5° - 315.0°	71	-3	13
15	315.0° - 337.5°	70	12	12
16	337.5° - 360.0°	68	11	11