

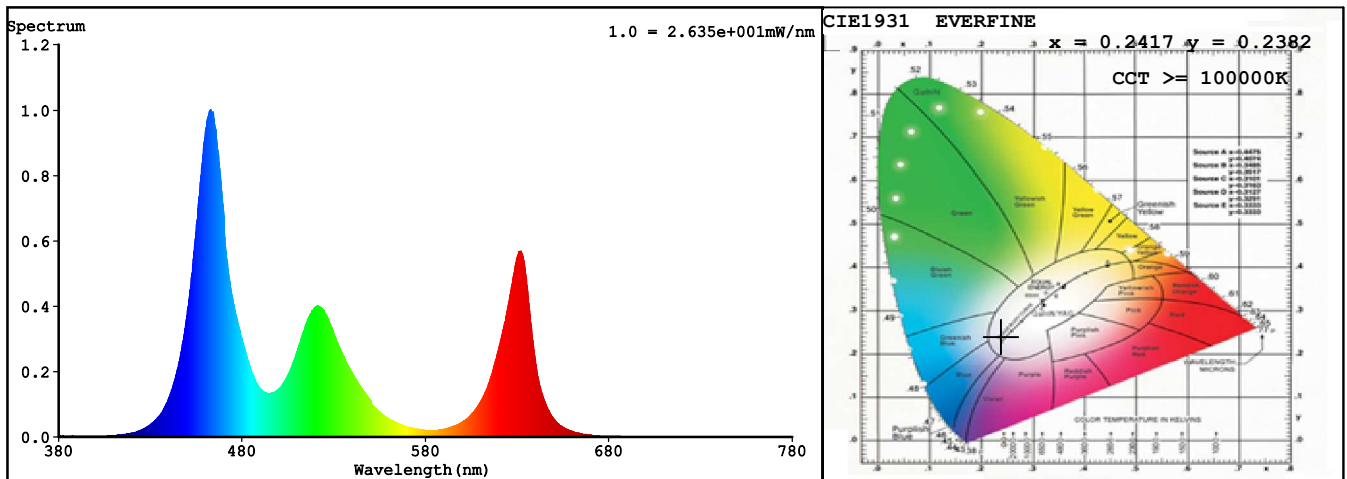
Spectrum Test Report

Sample : DS5544812NO	Date : 2019-07-17 10:00:06
Specification : DS5544812NO-0RGBNDA012WC4000	Sam. Status : 1M
Sample No. : 1	Standard :
Manufacturer : COLORS	Instrument : HaasSuite(EVERFINE)
Remark : RGB	Test by : LYH

Test Condition

Temperature : 25.3Deg	RH : 65.0%
WL Range : 380nm-780nm	IP : 50203 (77%)
Test Mode : Accuracy Test	T : 180 ms
Sensitivity : High	

Spectrum



Colorimetric Parameters

Chromaticity Coordinate: $x = 0.2417$ $y = 0.2382$ / $u' = 0.1798$ $v' = 0.3988$ ($duv=8.03e-04$)
 CCT>=100000K Prcp WL: Ld=476.3nm Purity=40.2%
 Peak WL: Lp=463nm FWHM: =20.1nm Ratio:R=21.1% G=65.9% B=12.9%

Render Index: Ra = 52.5 TM30:Rf=50 Rg=115

R1 =34 R2 =62 R3 =79 R4 =54 R5 =57 R6 =65 R7 =62
 R8 =7 R9 =0 R10=17 R11=46 R12=61 R13=37 R14=82 R15=13
 LEVEL:OUT WHITE:OUT

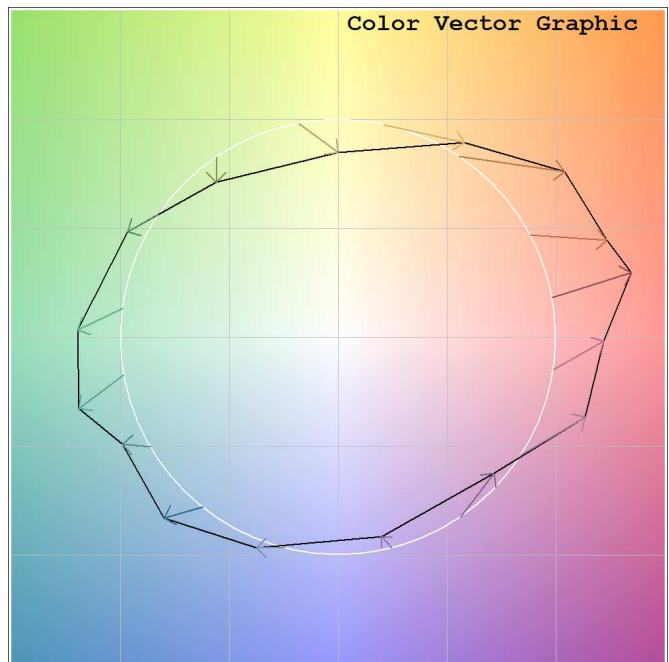
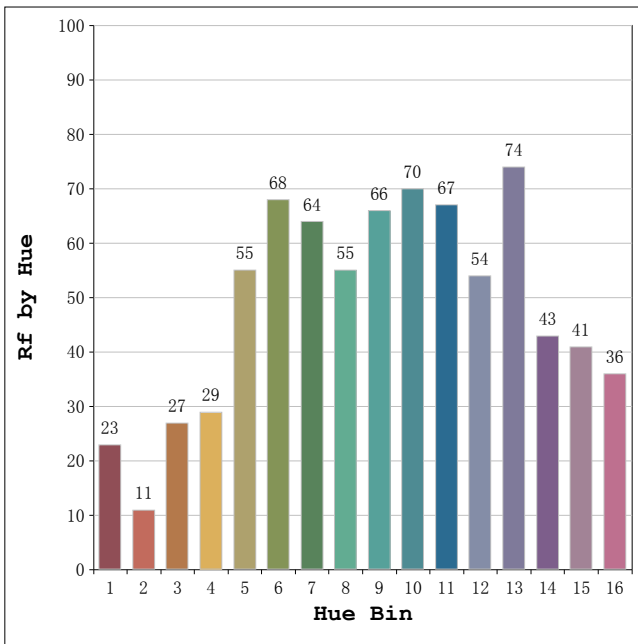
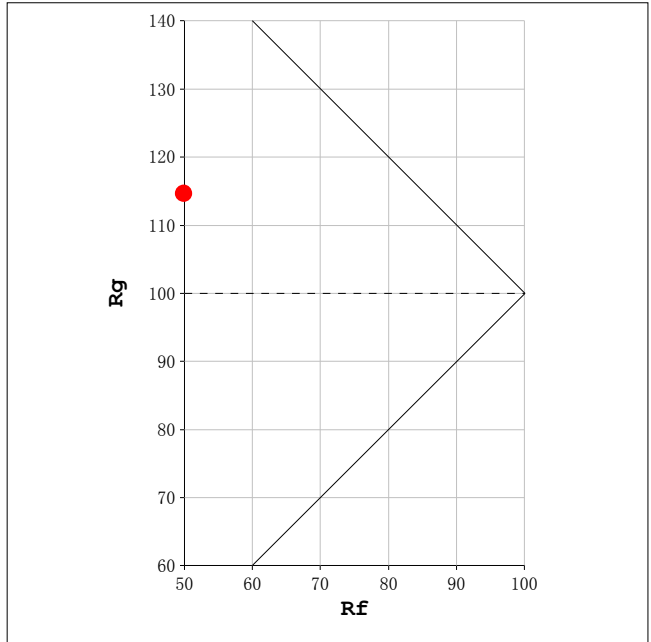
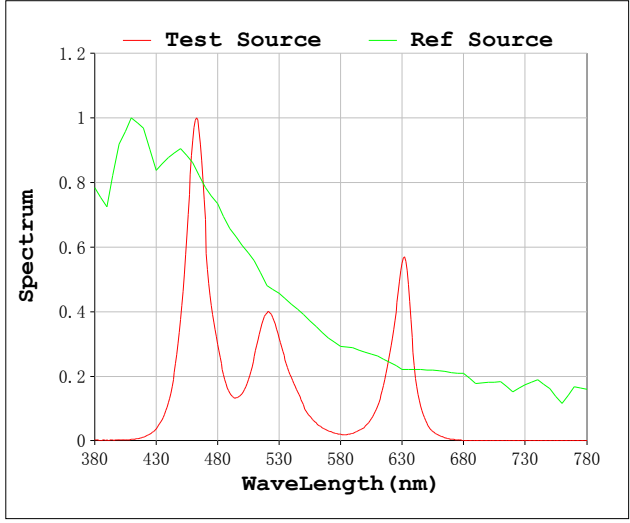
Photometric & Radiometric Parameters

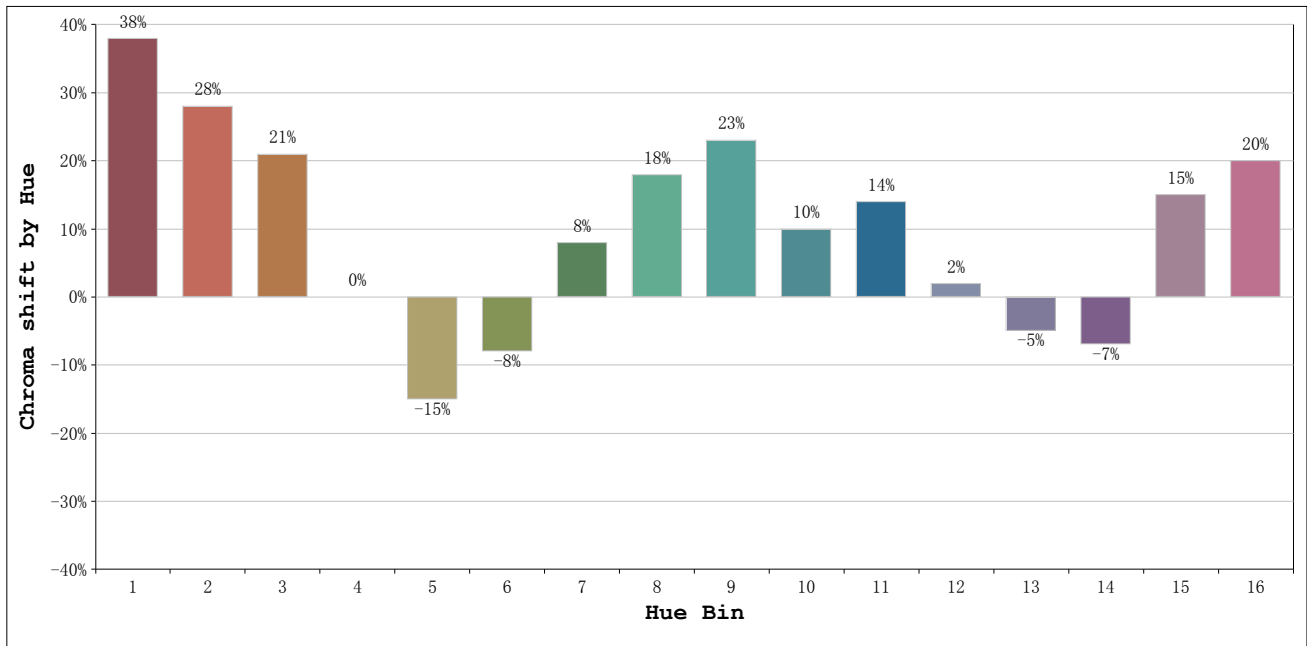
Flux = 313.25 lm Eff. : 30.78 lm/W Fe = 1.4387 W

Electrical parameters

V = 48.00 V I = 0.2120 A P = 10.18 W PF = 1.000 F=0.00 Hz

Rf: 50 CCT: 100000 K u': 0.1798
 Rg: 115 Duv: 0.0008 v': 0.3988





Hue Bin	Hue Angle	Rf	Graphic shift(%)	
			Chroma	Hue
1	0.0° - 22.5°	23	38	4
2	22.5° - 45.0°	11	28	-21
3	45.0° - 67.5°	27	21	-43
4	67.5° - 90.0°	29	0	-37
5	90.0° - 112.5°	55	-15	-14
6	112.5° - 135.0°	68	-8	7
7	135.0° - 157.5°	64	8	14
8	157.5° - 180.0°	55	18	14
9	180.0° - 202.5°	66	23	11
10	202.5° - 225.0°	70	10	-7
11	225.0° - 247.5°	67	14	-11
12	247.5° - 270.0°	54	2	-12
13	270.0° - 292.5°	74	-5	-2
14	292.5° - 315.0°	43	-7	24
15	315.0° - 337.5°	41	15	31
16	337.5° - 360.0°	36	20	17