

Specification

DF8-48V-10mm



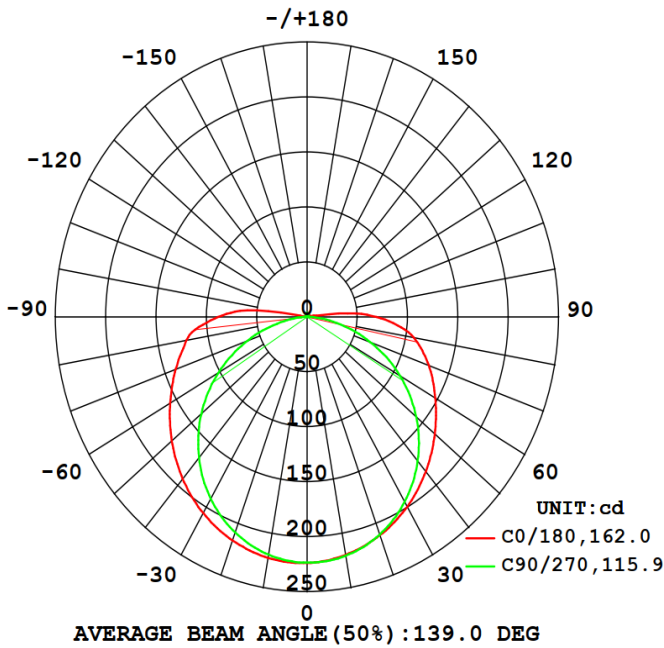
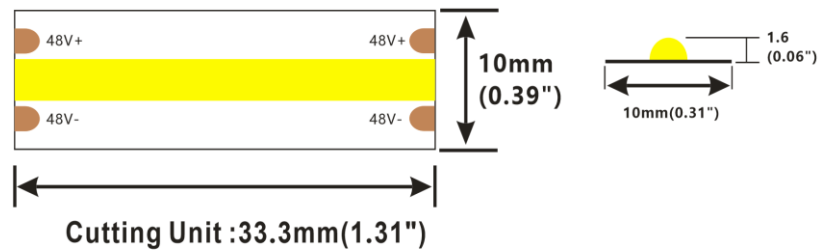
▼General description

- Light line and dot-free with big emitting angle,15m long strip driven by one end power supply.
- CRI>90,86LM/W@4000K
- suit for furniture lighting and decorative lighting application
- 7 colors optional
2700K\3000K\4000K\6500K\R\G\B



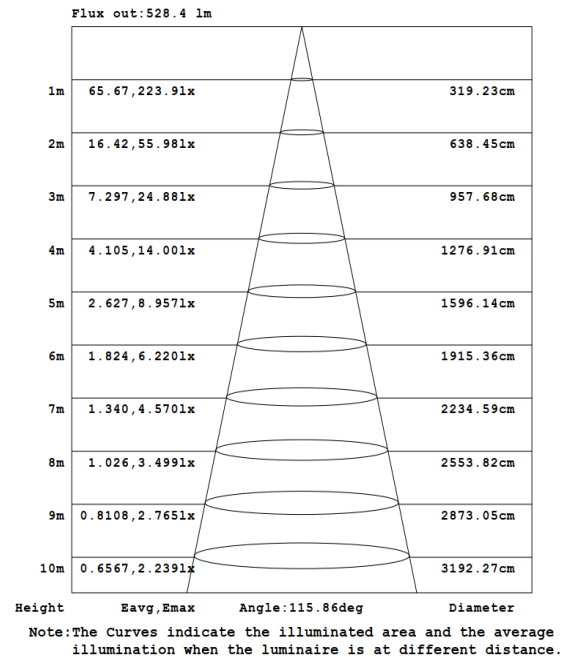
▼Dimension

- ※Max.length: 15000mm
- Cutting unit: 33.3mm
- Min. bend diameter: Φ60mm
- Mounting: 3M tape
- IP: IP20/IP65/IP67
- ※Warranty: 3years






Photometric of 1M (4000K) strip

- ※Max.length data is based on 10% voltage drop
- ※Warranty is based on indoor use









AAI Figure

▼ IP Process

IP Process	Picture	description	Size	optional CCT/color for finished product	lumen output rate
NO	 NO/IP20	No proof	10mm*1.6mm	2700K/3000K/4000K/6500K/R/G/B	100%
NANO	 NANO/IP65	NANo-proof	10mm*1.6mm	2700K/3000K/4000K/6500K/R/G/B	98%
ET	 ET/IP67	Extrusion tube	12mm*4.8mm	2700K/3000K/4000K/6500K/R/G/B	88%

▼ Accessories Information

Name	Picture	Code	description
Fixed Clip		94-02-00-0003	Silicone clip, screw:PA 3*8mm suitable for 10mm FPC,IP67 waterproof strip
Slim connector		94-03-00-0064	TSC-10-2, suitable for 10mm fpc to fpc connection , IP20, 2pin, 10pcs per bag
FPC with wire		94-03-00-0067	wire connection when using together with TSC-10-2,IP20,2PIN, 10PCS per bag
Silicone end cap set		94-02-00-0022	Silicone end cap set, including end cap and plug, suitable for 10mm FPC,EH/ET/EF silicone extrusion strip
Mounting groove		94-02-00-0025	Transparent PVC mounting groove,suitable for 10mm FPC,silicone extruded EF/ET strip
Stopper glue		94-16-03010001	Silicone gel, suitable for ST/ET/EH/EF waterproof LED strip

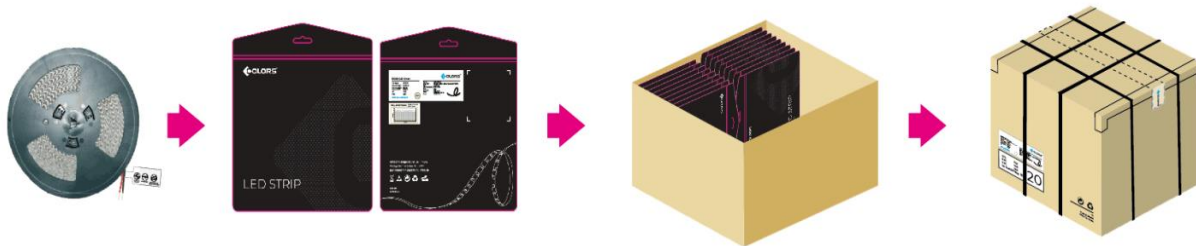
▼ Order Code Formats

1: Category		2: LED		3: LM/m		4: Voltage		5:FPC Width		6: IP Process		7: CRI		8: CCT	
D	-	F	COF	8	800LM/M	48	48V	10	10mm	NO	NO	9	>90	SW	2700K
										NA	NANO	0	0	WW	3000K
										ET	Extrusion tube			NW	4000K
														W	6500K
														R	R
														G	G
														B	B
D	-	F		8		48		10		NO		9		SW	
9: Silk Printing		10: Entry cable		11: Wire type		12: Wire length		13: Tape type		14: Label Type		15: Strip Length			
N	Neutral	S	Single	A	red and black cable	012	12cm	W	White 3M	C	COLORS	0250	2.5m		
		D	Double	W	Silicone wire	020	20cm	R	Red tape	S	Customized	0500	5m		
		X	Nothing	X	Nothing	050	50cm					5000			
						100	100cm								
						0	Nothing								
N		S		A		012		W		C		0250			

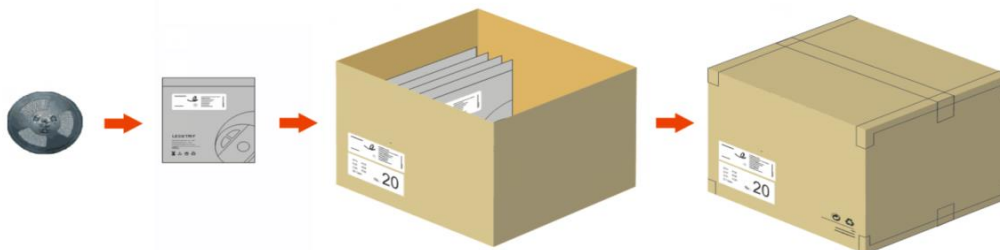
DF82408NO-9SWNSA012WC0250

▼ Packing

Colors brand package (NONA)



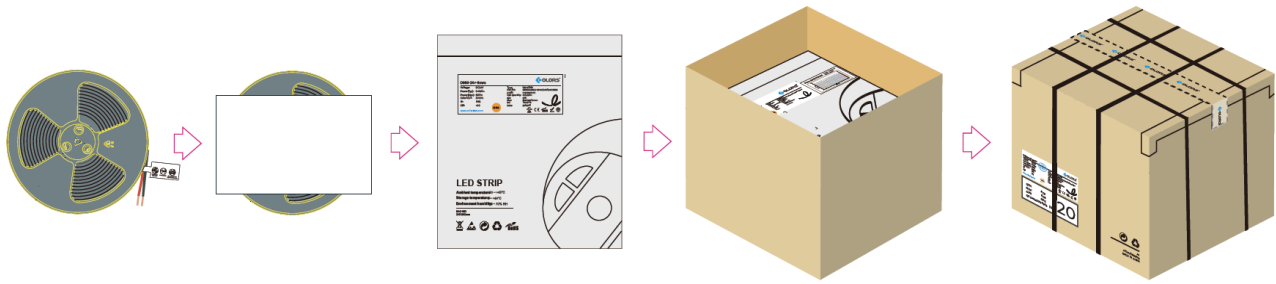
General customized package (ET)



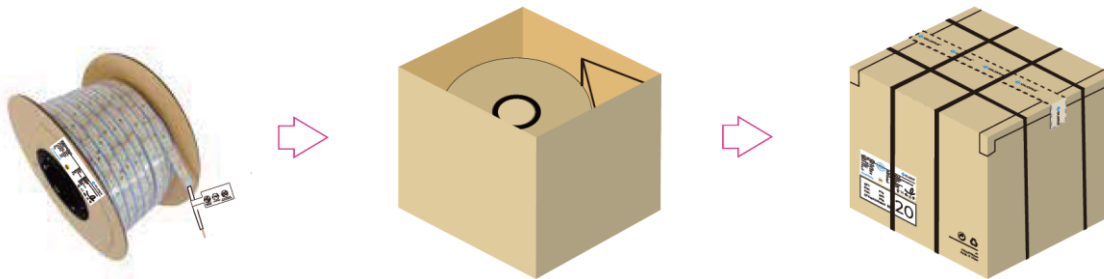
IP Process	Product size(mm)	Product quantity (m/reel)	Product quantity (m/case)	Product net weight(kg)	Net weight per box (kg)	Gross weight (kg)	Package size (mm)
NO	15000*10*1.6	15	750	0.24	12	13.80	410*410*260
NA	15000*10*1.6	15	750	0.25	12.5	14.38	410*410*260
ET	15000*12*4.8	15	150	1.4	14	16.10	410*410*260

Remark: data with 10% tolerance

Engineering packaging of NO(IP20)/NA(IP65)



Engineering packaging of ET(IP67)



IP Process	Product size(mm)	Product quantity (m/reel)	Product quantity (m/case)	Product net weight(kg)	Net weight per box (kg)	Gross weight (kg)	Package size (mm)
NO	50000*10*1.6	50	500	1.2	12.5	14.4	410*410*260
NA	50000*10*1.6	50	500	1.3	13	14.7	410*410*260
ET	50000*10*4.8	50	100	4.8	9.6	11.04	255*255*260

Remark: data with 10% tolerance

▼Precautions

- ※ Please drive the led strip with 48VDC isolated power, and the ripple of the constant voltage source should be less than 5%.
- ※ Please do not bend the strip into an arc with a diameter less than 60mm to ensure the longevity and reliability.
- ※ Do not fold it in case any damage of LED beads.
- ※ Do not pull the power wire hard to ensure the longevity. Any Crash may damage the LED light is prohibited.
- ※ Please make sure the wire is connected to the anode and cathode correctly. The power output should be consistent with the voltage of the strip to avoid damage.
- ※ LED lights should be stored in dry, sealed environment. Please only unpack it before usage. Ambient temperature: -25°C~40°C.Storage temperature: 0°C~60°C.Please use the strips without waterproof within indoor environment with humidity less than 70%.
- ※ Please be careful during operation. Do not touch the AC power supply in case of electric shock.
- ※ Please leave at least 20% power for the power supply during using to ensure there is enough power supply to drive the product.
- ※ Do not use any acid or alkaline adhesives to fix the product (e.g.: glass cement).