

Specification

DF4RGB-24V-10mm



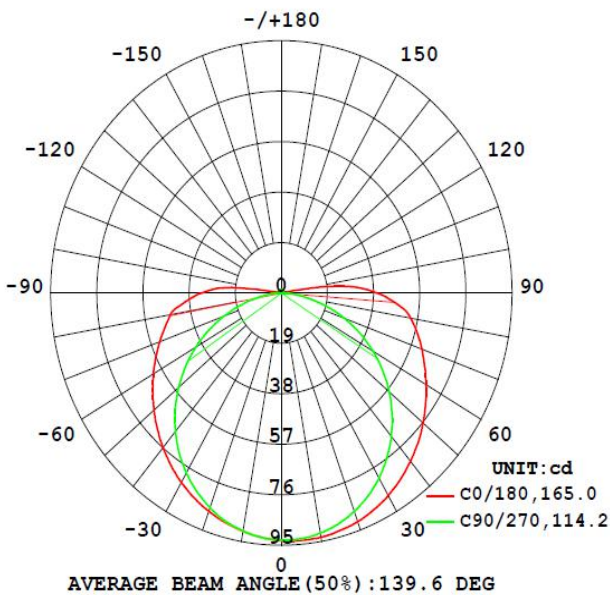
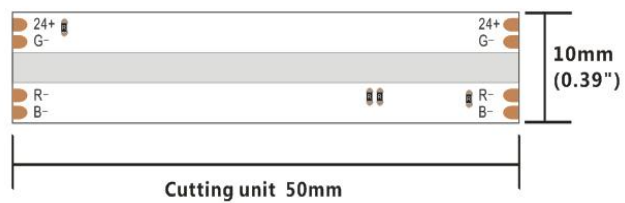
▼ General description

- RGB colorful strip Light line and dot-free
- Widely adaptable to all types of controllers
- High quality FPC, high thermal 3M adhesive
- Ta: -25~40°C; Tc: 75°C (max)



▼ Dimension

- *Max.length: 5000mm
- Cutting unit: 50mm
- Min. bend diameter: Φ60mm
- Mounting: 3M tape
- IP: IP20/IP65
- *Warranty: 3years



Height	Eavg, Emax	Angle: 139.60deg	Diameter
1m	11.77, 93.31lx		543.58cm
2m	2.942, 23.33lx		1087.17cm
3m	1.308, 10.37lx		1630.75cm
4m	0.7355, 5.832lx		2174.34cm
5m	0.4707, 3.732lx		2717.92cm
6m	0.3269, 2.592lx		3261.50cm
7m	0.2402, 1.904lx		3805.09cm
8m	0.1839, 1.458lx		4348.67cm
9m	0.1453, 1.152lx		4892.26cm
10m	0.1177, 0.933lx		5435.84cm

Photometric of 1M (RGB) strip

AAI Figure

- ※Max.length data is based on 10% voltage drop
- ※Warranty is based on indoor use




▼ Electronic & output data

Input voltage: DC24V Rated current: 0.42A(1m) /1.67A(5m)
 Typical Power: 10W(1m) /40W(5m) CRI: 0
 Max.power: 11.5W(1m) On-off times: 10000 (test times)
 Power range: 8.5 ~ 11.5W(1m) Copper foil: 2oz




CRI	Color	CCT	Lumen(lm)	lm/W	Energy efficiency class
0	RGB	/	400	40	/
0	R	R:625-630nm	50	10	/
0	G	G:515-520nm	290	92	/
0	B	B:465-470nm	60	30	/

- 1.The tolerance of output data can be vary up to 15%
- 2.the output data tested according to IES TM-30-15
- 3.the output data is based on IP20/1merter, data of 5m in only for reference
- 4.IP protection process leads changes to size, CCT and luminous flux

▼ IP Process

IP Process	Picture	description	Size	optional CCT/color for finished product	lumen output rate
NO		No proof	10mm*1.6mm	2700K+6500K	100%
NANO		NANo-proof	10mm*1.6mm	2700K+6500K	98%
ET		Extrusion tube	12mm*4.8mm	2700K+6500K	88%

▼ Accessories Information

Name	Picture	Code	description
Fixed Clip		94-02-00-0002	Silicone clip, screw:PA 3*8mm suitable for 8mm FPC,IP67 waterproof strip
Hole plug		94-02-00-0022	Silicone end cap without hole,suitable for10mm PFC, IP65 IP67 waterproof LED strip
Stopper glue		94-16-03010001	Silicone gel,suitable for IP65 and IP67 LED strip
RGB set		23-01-00-0046	M3+M4-5A Input voltage: 12-24VDC Maximum loaded current: 6A*3CH Max 18A Maximum loaded power:216W/432W(12V/24V)

▼ Order Code Formats

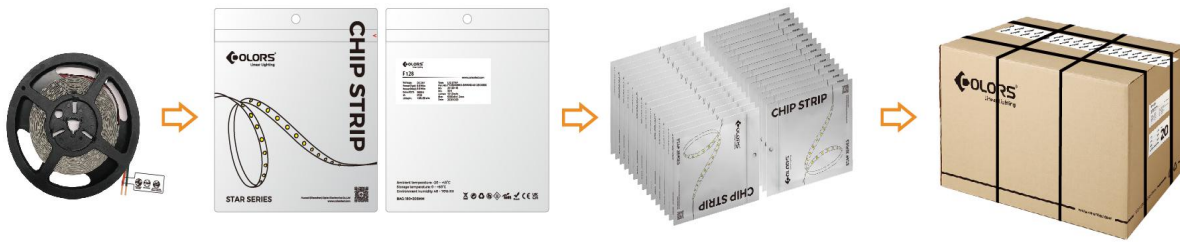
1: Category		2: LED		3: LM/m		4: Voltage		5:FPC Width		6: IP Process		7: CRI		8: CCT	
D	-	F	COF	4	400LM/M	24	24V	10	10mm	NO	NO	0	RGB	RGB	RGB
										NA	NANO				
										ET	Extrusion tube				
D	-	F		4		24		10		NO		0			RGB

9: Silk Printing		10: Entry cable		11: Wire type		12: Wire length		13: Tape type		14: Label Type		15: Strip Length	
N	Neutral	S	Single	A	red and black cable	012	12cm	Y	Yellow 3M	C	COLORS	0500	5m
		D	Double	X	Nothing	0	Nothing	X	Nothing	S	Customized		
		X	Nothing										
N		D		A		012		Y		C		0500	

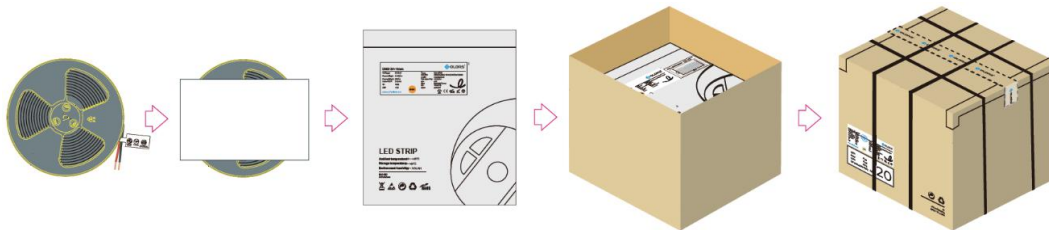
DF42410NO-0RGBNDA012YC0500

▼ Packing

Colors brand package



General customized package



IP Process	Product size(mm)	Product quantity	Product quantity	Product net weight(kg)	Net weight per box (kg)	Gross weight (kg)	Package size (mm)
NO	5000*10*1.6	5	300	0.12	7.2	8.28	410*410*260
NA	5000*10*1.6	5	300	0.13	7.8	8.97	410*410*260
ET	5000*12*4.8	5	200	0.4	16	18.4	410*410*260

Remark: data with 10% tolerance

▼ Precautions

- ※ Please drive the led strip with 24VDC isolated power, and the ripple of the constant voltage source should be less than 5%.
- ※ Please do not bend the strip into an arc with a diameter less than 60mm to ensure the longevity and reliability.
- ※ Do not fold it in case any damage of LED beads.
- ※ Do not pull the power wire hard to ensure the longevity. Any Crash may damage the LED light is prohibited.
- ※ Please make sure the wire is connected to the anode and cathode correctly. The power output should be consistent with the voltage of the strip to avoid damage.
- ※ LED lights should be stored in dry, sealed environment. Please only unpack it before usage. Ambient temperature: -25°C~40°C.Storage temperature: 0°C~60°C.Please use the strips without waterproof within indoor environment with humidity less than 70%.
- ※ Please be careful during operation. Do not touch the AC power supply in case of electric shock.
- ※ Please leave at least 20% power for the power supply during using to ensure there is enough power supply to
- ※ Do not use any acid or alkaline adhesives to fix the product (e.g.: glass cement).