

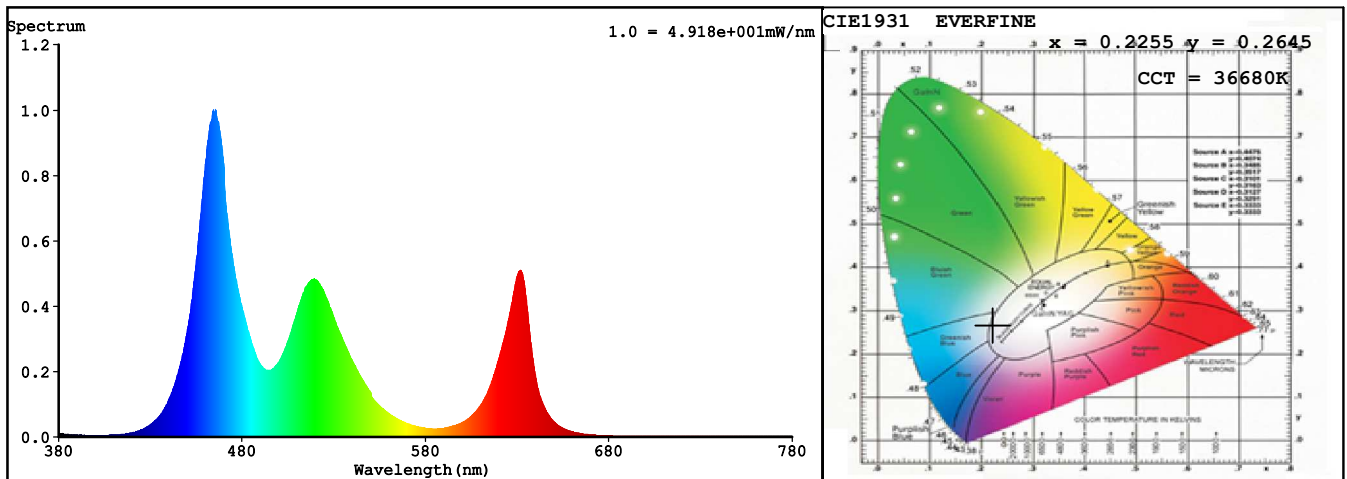
## Spectrum Test Report

Sample	: DA2402412NO	Date	: 2019-08-05 13:53:43
Specification	: DA2402412NO-0RGBNDA012WC0500	Sam. Status	:
Sample No.	: 1	Standard	:
Manufacturer	: COLORS	Instrument	: HaasSuite(EVERFINE)
Remark	: RGB	Test by	: JYH

### Test Condition

Temperature	: 25.3Deg	RH	: 65.0%
WL Range	: 380nm-780nm	IP	: 48507 (74%)
Test Mode	: Accuracy Test	T	: 107 ms
Sensitivity	: High		

### Spectrum



### Colorimetric Parameters

Chromaticity Coordinate:  $x = 0.2255$   $y = 0.2645$  /  $u' = 0.1576$   $v' = 0.4159$  ( $duv=2.51e-02$ )

CCT= 36680K Prcp WL:  $L_d=483.0nm$  Purity=42.2%

Peak WL:  $L_p=466nm$  FWHM: =21.8nm Ratio:R=16.1% G=70.6% B=13.4%

Render Index:  $R_a = 70.8$  TM30: $R_f=57$   $R_g=102$

R1 =69 R2 =73 R3 =78 R4 =81 R5 =84 R6 =72 R7 =66

R8 =43 R9 =0 R10=39 R11=78 R12=66 R13=63 R14=85 R15=52

LEVEL:OUT WHITE:OUT

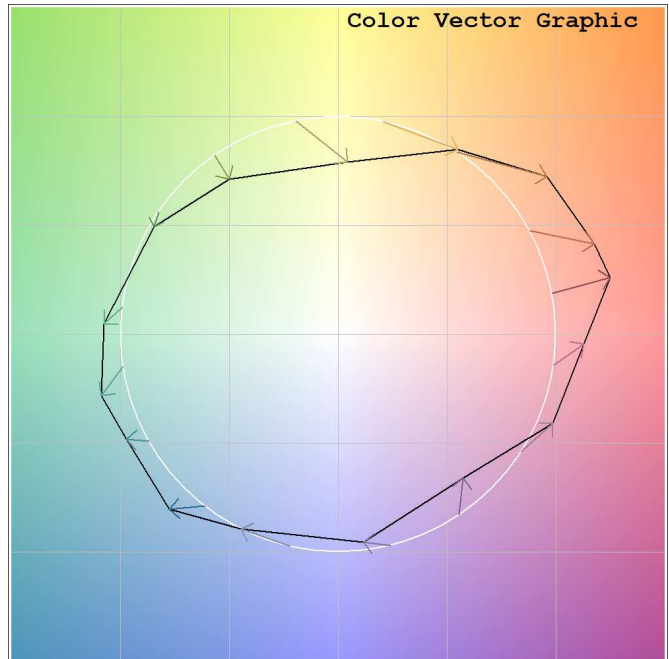
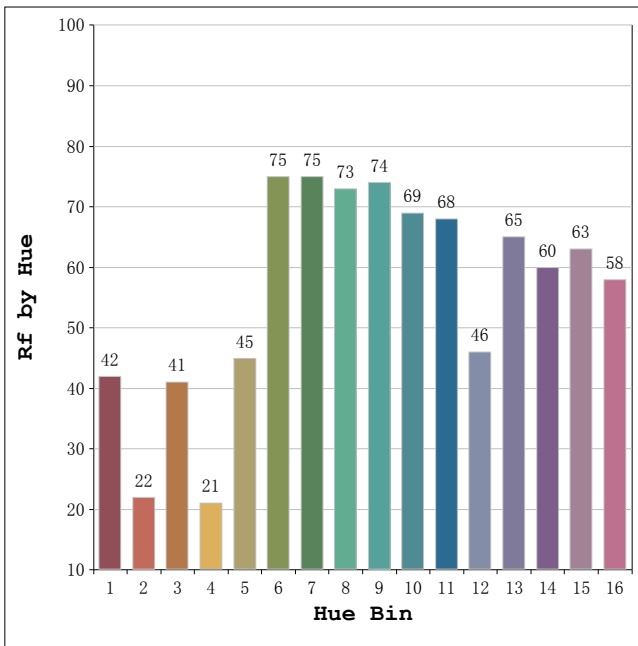
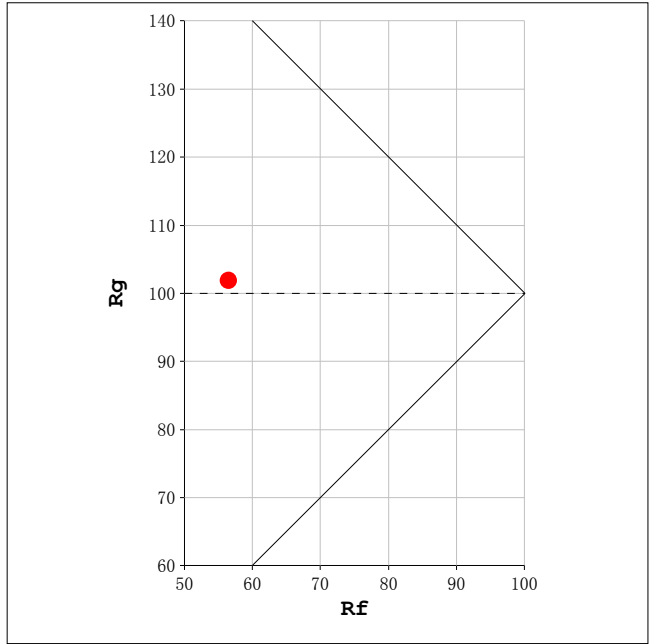
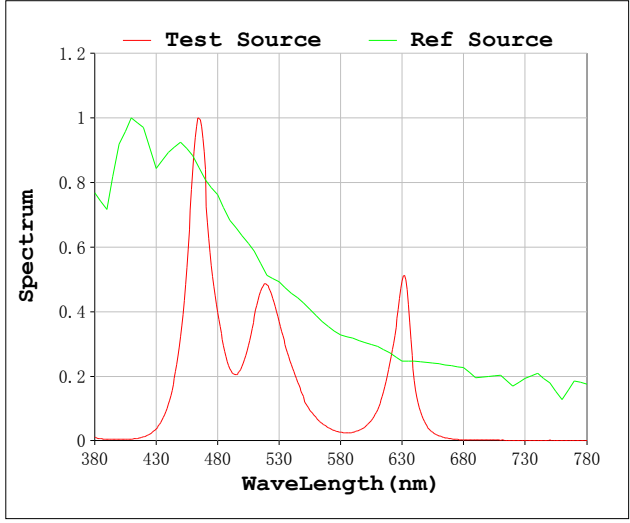
### Photometric & Radiometric Parameters

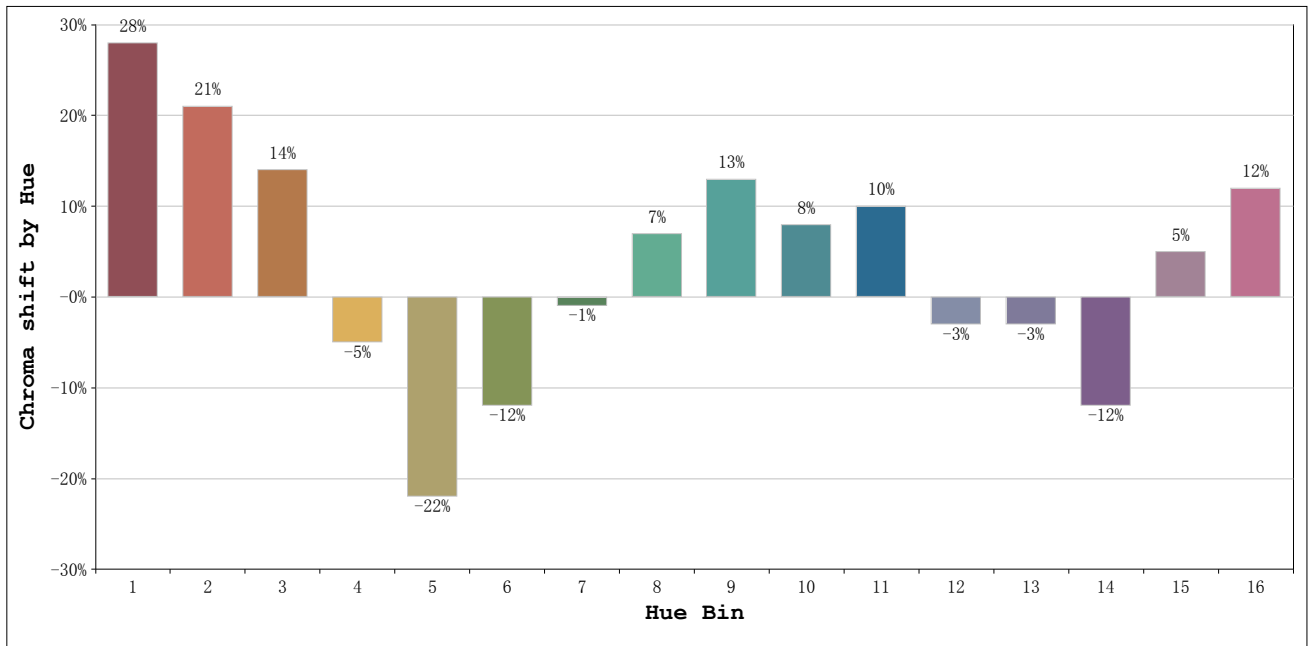
Flux = 675.66 lm Eff. : 38.29 lm/W  $F_e = 2.9080$  W

### Electrical parameters

V = 24.00 V I = 0.7354 A P = 17.65 W PF = 1.000 F=0.00 Hz

Rf: 57      CCT: 36680 K      u': 0.1576  
 Rg: 102      Duv: 0.0251      v': 0.4159





Hue Bin	Hue Angle	Rf	Graphic shift(%)	
			Chroma	Hue
1	0.0° - 22.5°	42	28	2
2	22.5° - 45.0°	22	21	-21
3	45.0° - 67.5°	41	14	-40
4	67.5° - 90.0°	21	-5	-35
5	90.0° - 112.5°	45	-22	-19
6	112.5° - 135.0°	75	-12	0
7	135.0° - 157.5°	75	-1	7
8	157.5° - 180.0°	73	7	9
9	180.0° - 202.5°	74	13	11
10	202.5° - 225.0°	69	8	-6
11	225.0° - 247.5°	68	10	-12
12	247.5° - 270.0°	46	-3	-23
13	270.0° - 292.5°	65	-3	-11
14	292.5° - 315.0°	60	-12	11
15	315.0° - 337.5°	63	5	19
16	337.5° - 360.0°	58	12	12