

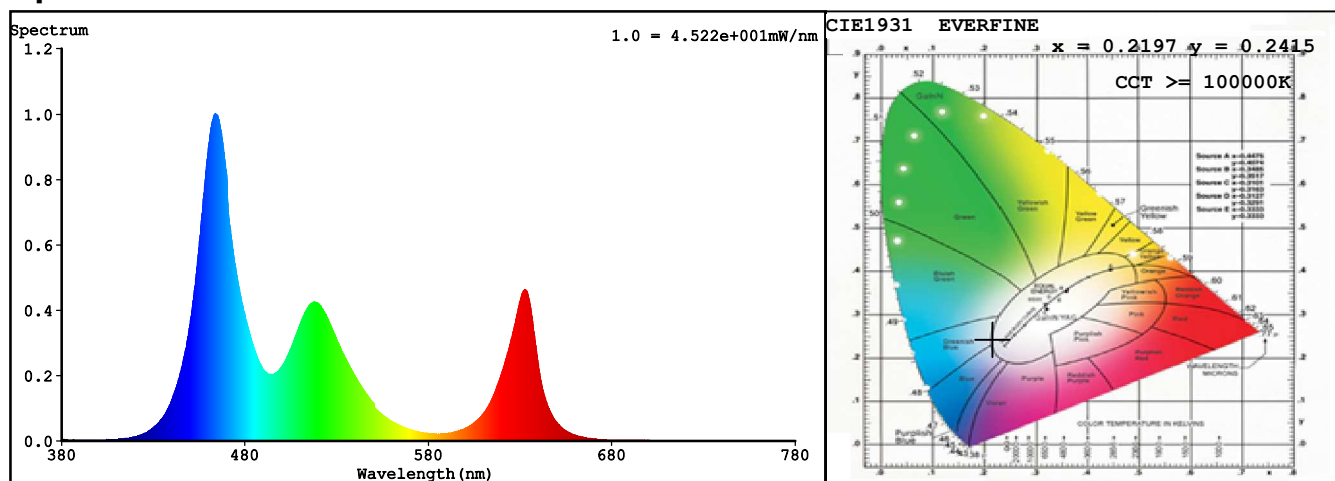
Spectrum Test Report

Sample : DA1682410NO	Date : 2018-12-12
Specification : DA1682410NO-0RGBNDA012WC0500	Sam. Status : 1M
Sample No. : 1	Standard :
Manufacturer : COLORS	Instrument : HaasSuite(EVERFINE)
Remark :	Test by : HJ

Test Condition

Temperature : 25.3Deg	RH : 65.0%
WL Range : 380nm-780nm	IP : 50439 (77%)
Test Mode : Accuracy Test	T : 139 ms
Sensitivity : High	

Spectrum



Colorimetric Parameters

Chromaticity Coordinate: $x = 0.2197$ $y = 0.2415$ / $u' = 0.1610$ $v' = 0.3982$ ($duv=1.96e-02$)

CCT>=100000K Prcp WL: Ld=480.3nm Purity=46.7%

Peak WL: Lp=464nm FWHM: =22.5nm Ratio:R=16.6% G=68.4% B=15.0%

Render Index: Ra = 66.1 TM30:Rf=54 Rg=106

R1 =63 R2 =67 R3 =73 R4 =79 R5 =79 R6 =67 R7 =64

R8 =36 R9 =0 R10=22 R11=77 R12=67 R13=57 R14=82 R15=43

LEVEL:OUT WHITE:OUT

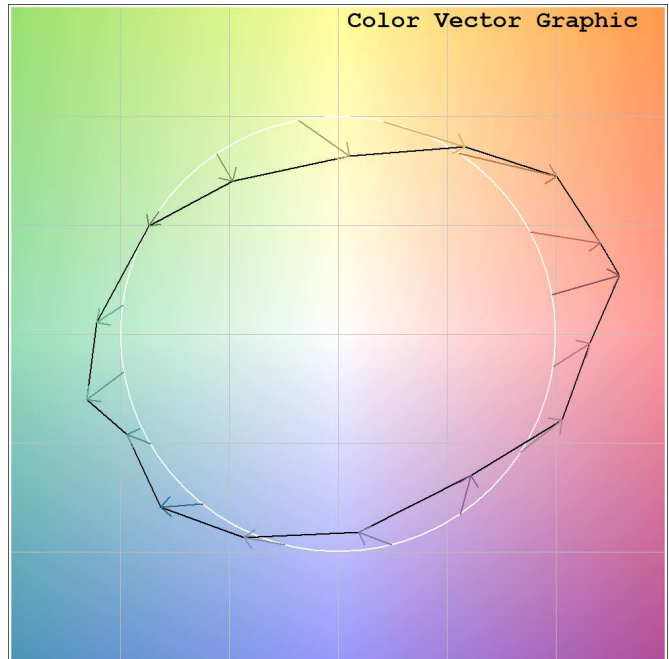
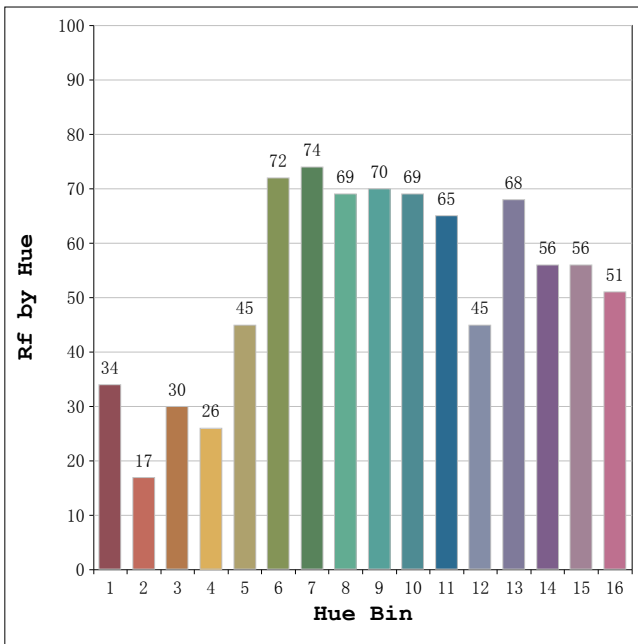
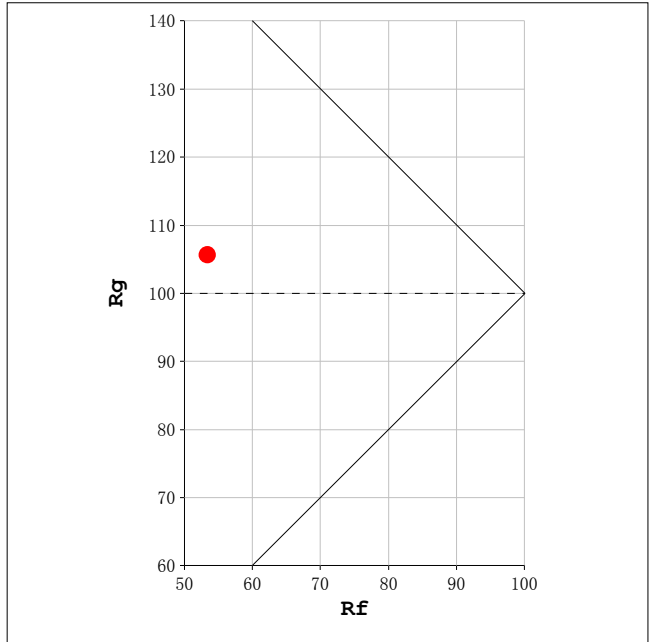
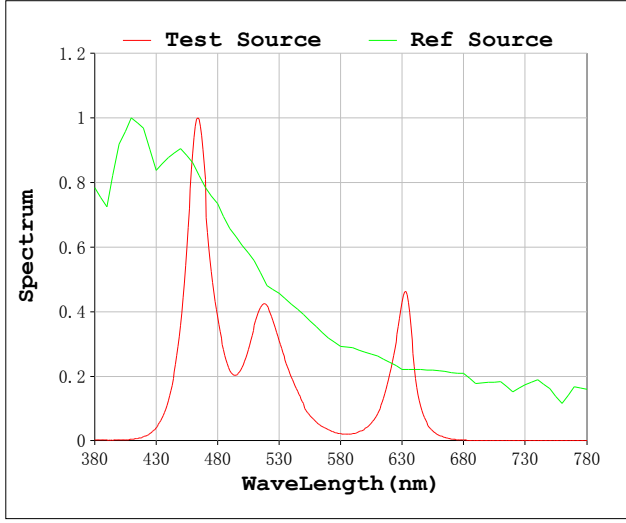
Photometric & Radiometric Parameters

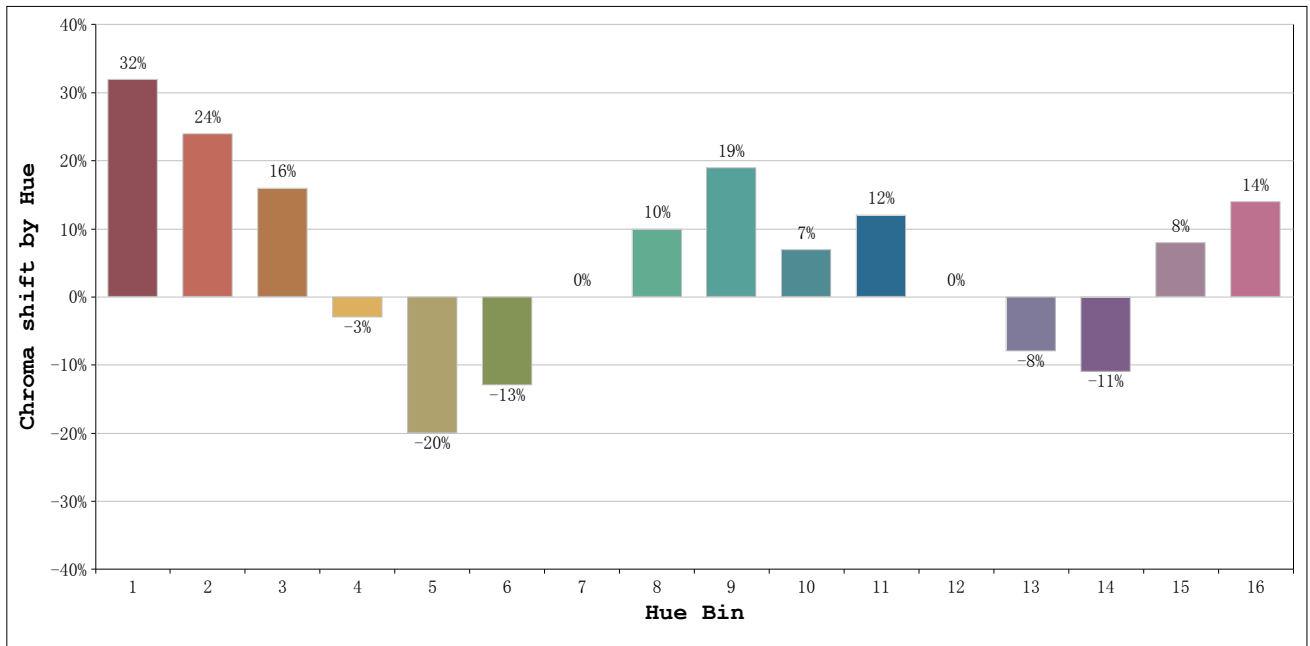
Flux = 553.76 lm Eff. : 33.74 lm/W Fe = 2.5626 W

Electrical parameters

V = 24.00 V I = 0.6839 A P = 16.41 W PF = 1.000 F=0.00 Hz

Rf: 54 CCT: 100000 K u': 0.1610
 Rg: 106 Duv: 0.0196 v': 0.3982





Hue Bin	Hue Angle	Rf	Graphic shift(%)	
			Chroma	Hue
1	0.0° - 22.5°	34	32	3
2	22.5° - 45.0°	17	24	-21
3	45.0° - 67.5°	30	16	-42
4	67.5° - 90.0°	26	-3	-38
5	90.0° - 112.5°	45	-20	-19
6	112.5° - 135.0°	72	-13	1
7	135.0° - 157.5°	74	0	8
8	157.5° - 180.0°	69	10	10
9	180.0° - 202.5°	70	19	9
10	202.5° - 225.0°	69	7	-8
11	225.0° - 247.5°	65	12	-14
12	247.5° - 270.0°	45	0	-18
13	270.0° - 292.5°	68	-8	-13
14	292.5° - 315.0°	56	-11	14
15	315.0° - 337.5°	56	8	23
16	337.5° - 360.0°	51	14	14