

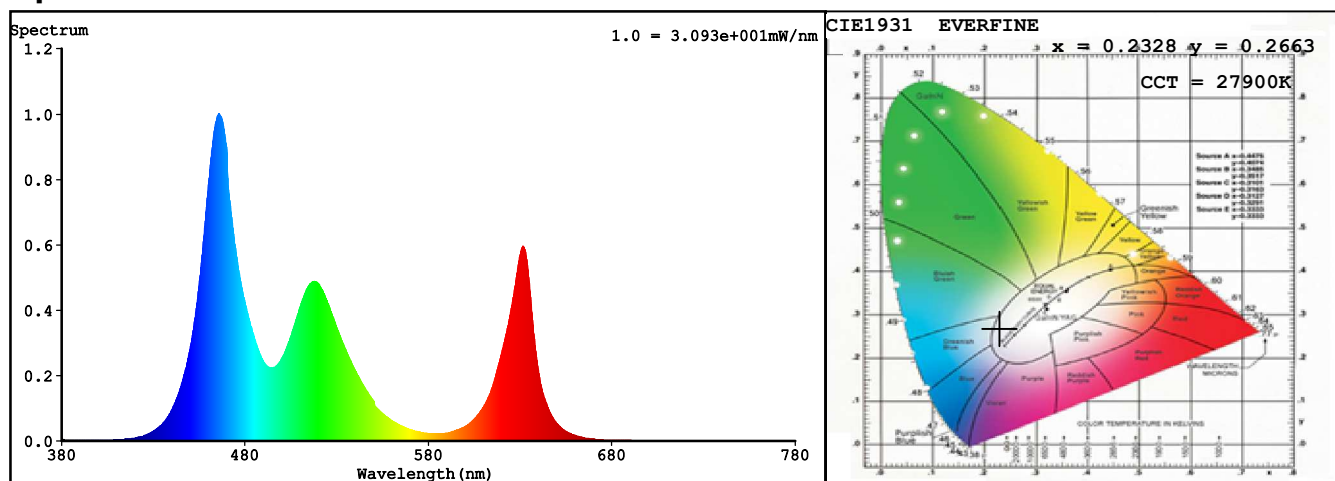
Spectrum Test Report

Sample : DA1202408N0	Date : 2018-11-02
Specification : DA1202408N0-0RGBNDA012WC0500-RGESam. Status	: 1M
Sample No. : 1	Standard :
Manufacturer : Colors	Instrument : HaasSuite(EVERFINE)
Remark : RGB	Test by : ZJ

Test Condition

Temperature : 25.3Deg	RH : 65.0%
WL Range : 380nm-780nm	IP : 48180 (74%)
Test Mode : Accuracy Test	T : 132 ms
Sensitivity : High	

Spectrum



Colorimetric Parameters

Chromaticity Coordinate: $x = 0.2328$ $y = 0.2663$ / $u' = 0.1625$ $v' = 0.4183$ ($duv=2.09e-02$)
 CCT= 27900K Prcp WL: $L_d=482.6nm$ Purity=39.7%
 Peak WL: $L_p=466nm$ FWHM: =21.9nm Ratio:R=18.2% G=68.0% B=13.9%

Render Index: $R_a = 60.6$ TM30:Rf=49 Rg=104

R1 =55 R2 =65 R3 =71 R4 =70 R5 =73 R6 =64 R7 =60
 R8 =26 R9 =0 R10=18 R11=70 R12=68 R13=52 R14=81 R15=37
 LEVEL:OUT WHITE:OUT

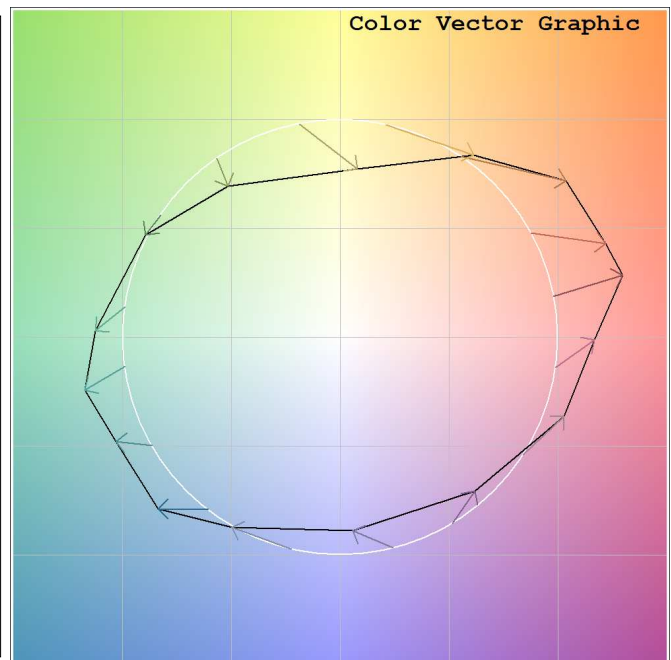
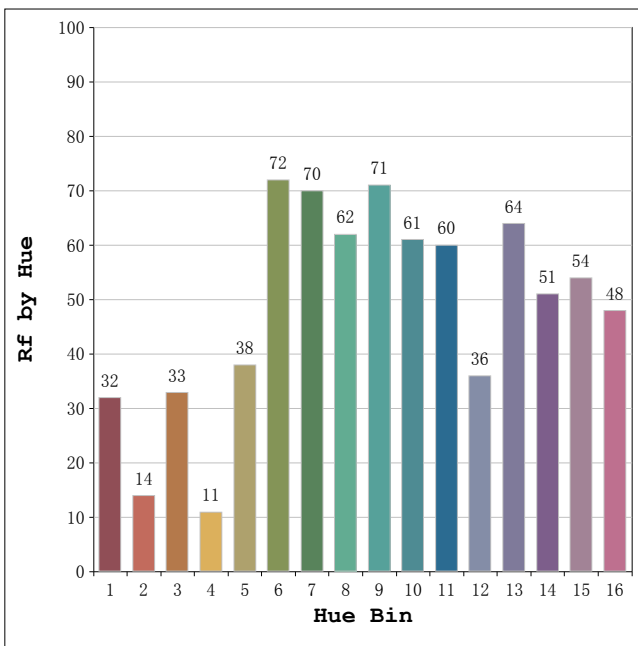
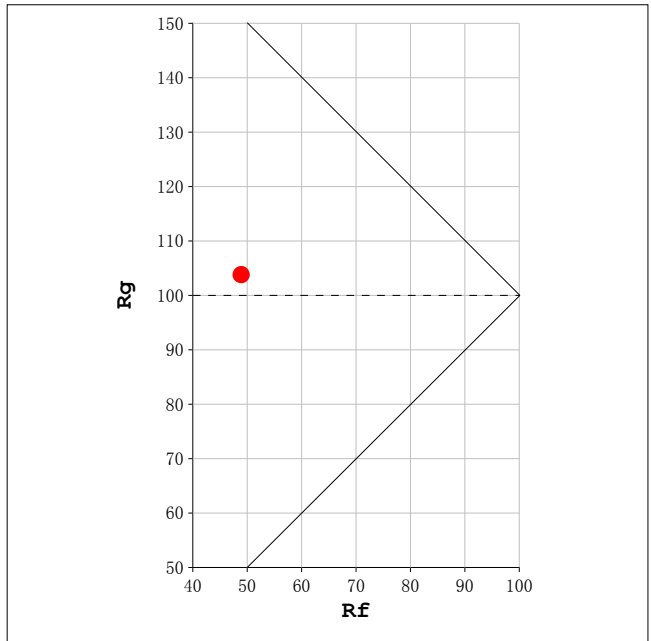
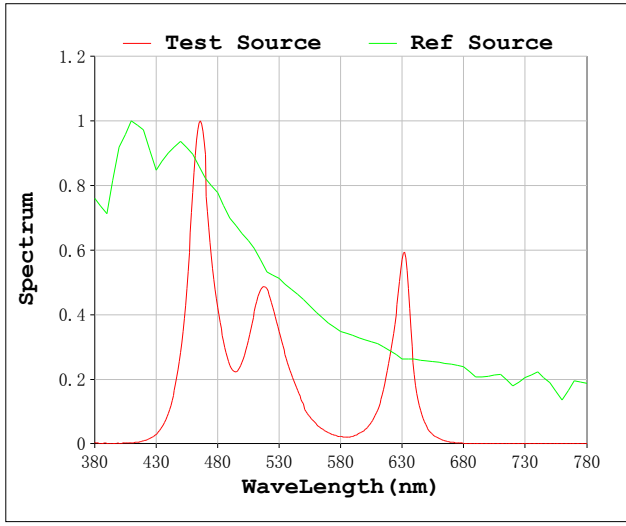
Photometric & Radiometric Parameters

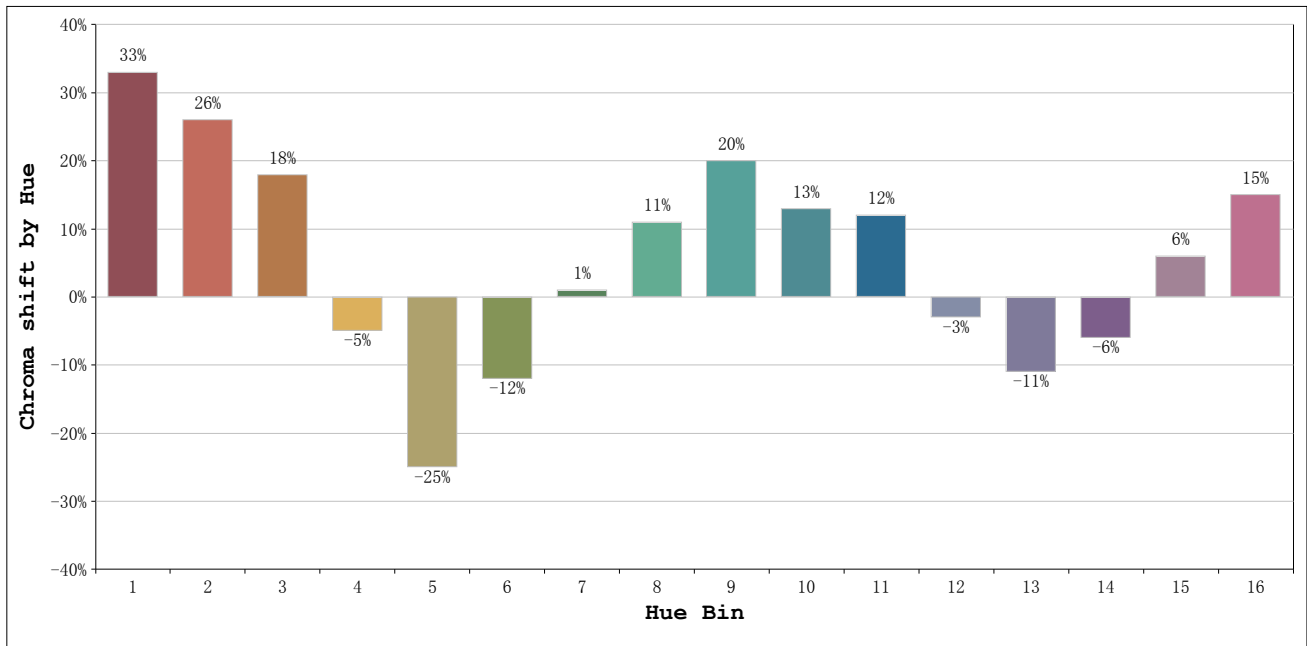
Flux = 423.91 lm Eff. : 42.78 lm/W $F_e = 1.8481$ W

Electrical parameters

V = 24.00 V I = 0.4129 A P = 9.909 W PF = 1.000 F=0.00 Hz

Rf: 49 CCT: 27900 K u': 0.1625
 Rg: 104 Duv: 0.0209 v': 0.4183





Hue Bin	Hue Angle	Rf	Graphic shift(%)	
			Chroma	Hue
1	0.0° - 22.5°	32	33	3
2	22.5° - 45.0°	14	26	-22
3	45.0° - 67.5°	33	18	-45
4	67.5° - 90.0°	11	-5	-41
5	90.0° - 112.5°	38	-25	-22
6	112.5° - 135.0°	72	-12	3
7	135.0° - 157.5°	70	1	11
8	157.5° - 180.0°	62	11	13
9	180.0° - 202.5°	71	20	7
10	202.5° - 225.0°	61	13	-10
11	225.0° - 247.5°	60	12	-18
12	247.5° - 270.0°	36	-3	-28
13	270.0° - 292.5°	64	-11	-16
14	292.5° - 315.0°	51	-6	17
15	315.0° - 337.5°	54	6	25
16	337.5° - 360.0°	48	15	16