

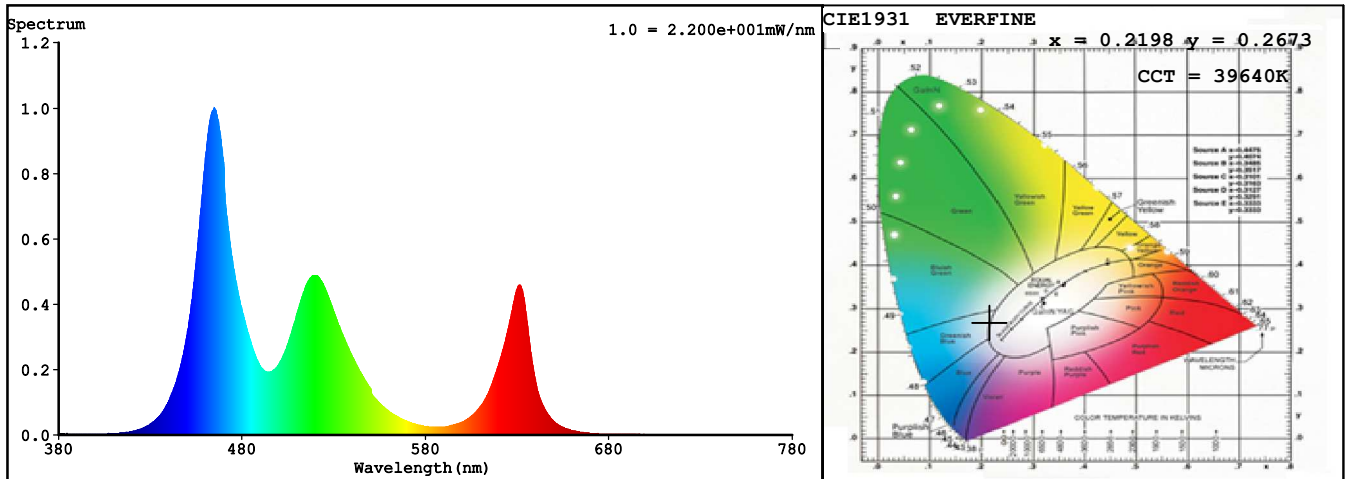
## Spectrum Test Report

Sample : DA1202405NO	Date : 2018-12-21
Specification : DA1202405NO-0RGBNDA012WC0500	Sam. Status : 1M
Sample No. : 1	Standard :
Manufacturer : COLORS	Instrument : HaasSuite(EVERFINE)
Remark :	Test by : HJ

### Test Condition

Temperature : 25.3Deg	RH : 65.0%
WL Range : 380nm-780nm	IP : 47485 (72%)
Test Mode : Accuracy Test	T : 271 ms
Sensitivity : High	

### Spectrum



### Colorimetric Parameters

Chromaticity Coordinate:  $x = 0.2198$   $y = 0.2673$  /  $u' = 0.1524$   $v' = 0.4171$  ( $duv=3.04e-02$ )  
 CCT= 39640K Prcp WL: Ld=483.8nm Purity=43.8%  
 Peak WL: Lp=465nm FWHM: =21.3nm Ratio:R=14.7% G=72.2% B=13.2%

Render Index: Ra = 75.4 TM30:Rf=59 Rg=99

R1 =78 R2 =76 R3 =80 R4 =83 R5 =91 R6 =75 R7 =68  
 R8 =53 R9 =0 R10=48 R11=77 R12=62 R13=67 R14=87 R15=61  
 LEVEL:OUT WHITE:OUT

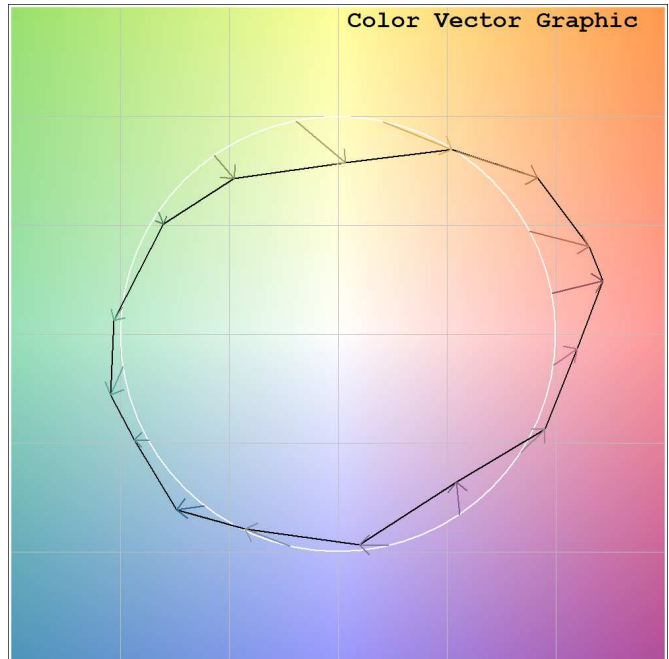
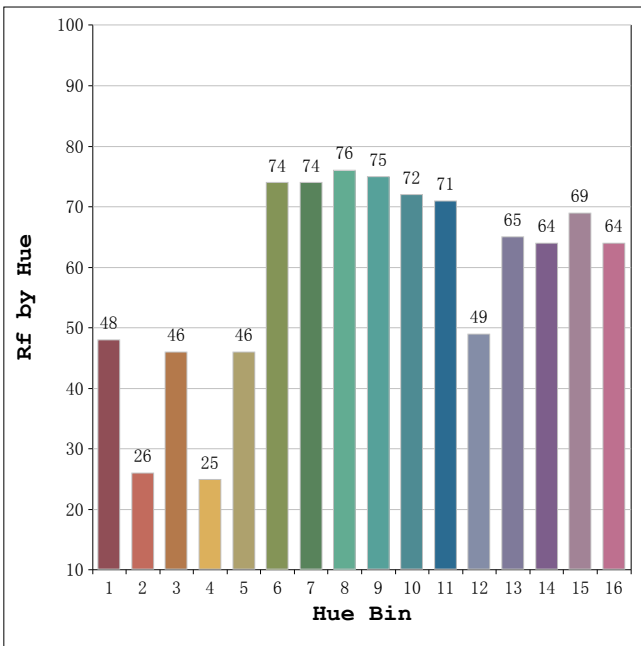
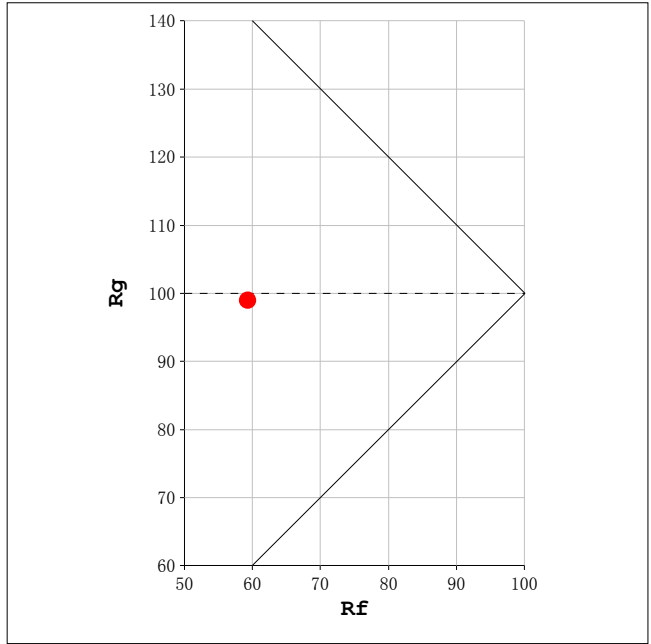
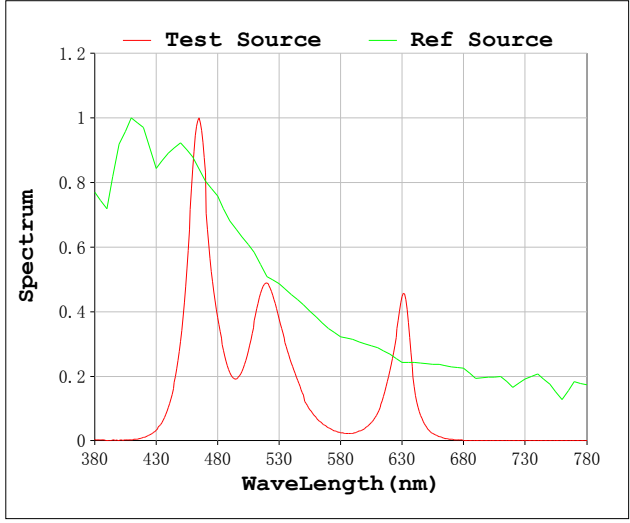
### Photometric & Radiometric Parameters

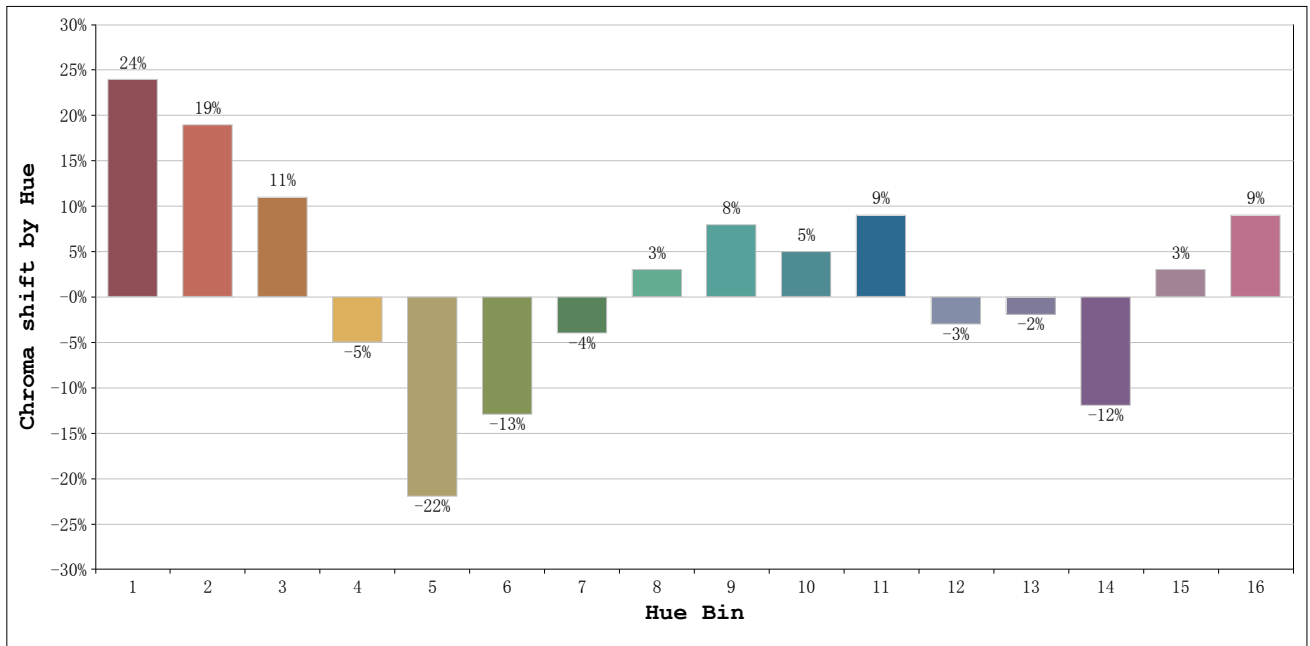
Flux = 297.79 lm Eff. : 39.42 lm/W Fe = 1.2555 W

### Electrical parameters

V = 24.00 V I = 0.3148 A P = 7.555 W PF = 1.000 F=0.00 Hz

Rf: 59      CCT: 39640 K      u': 0.1524  
 Rg: 99      Duv: 0.0304      v': 0.4171





Hue Bin	Hue Angle	Rf	Graphic shift(%)	
			Chroma	Hue
1	0.0° - 22.5°	48	24	1
2	22.5° - 45.0°	26	19	-20
3	45.0° - 67.5°	46	11	-37
4	67.5° - 90.0°	25	-5	-33
5	90.0° - 112.5°	46	-22	-18
6	112.5° - 135.0°	74	-13	-1
7	135.0° - 157.5°	74	-4	3
8	157.5° - 180.0°	76	3	7
9	180.0° - 202.5°	75	8	12
10	202.5° - 225.0°	72	5	-3
11	225.0° - 247.5°	71	9	-9
12	247.5° - 270.0°	49	-3	-21
13	270.0° - 292.5°	65	-2	-12
14	292.5° - 315.0°	64	-12	7
15	315.0° - 337.5°	69	3	15
16	337.5° - 360.0°	64	9	10