

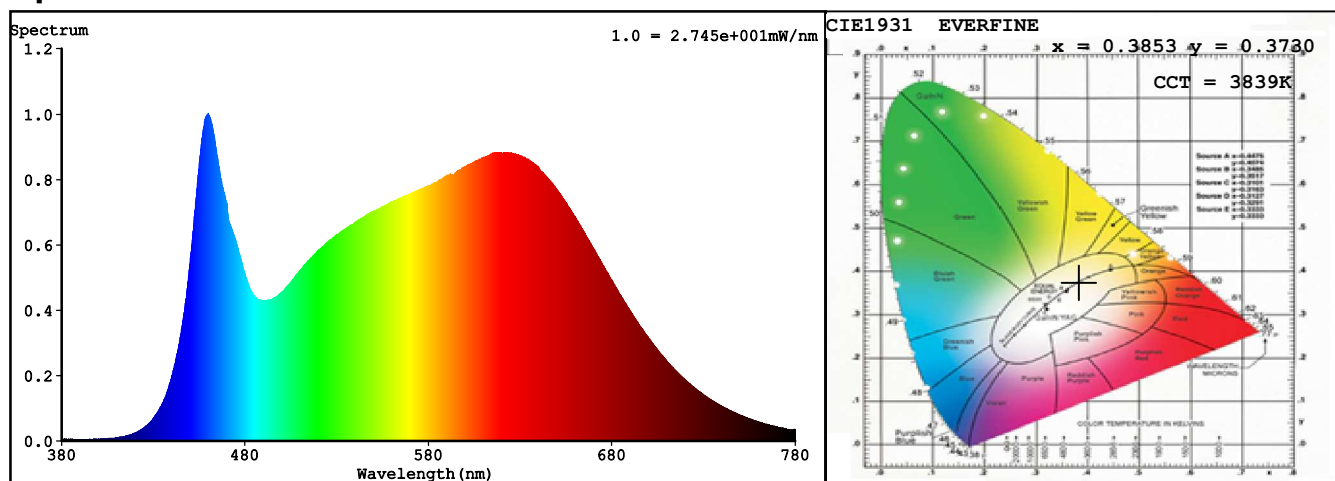
Spectrum Test Report

Sample : D62802410NO	Date : 2018-03-23 10:55:58
Specification : D62802410NO-9NWCD A012WC0100	Sam. Status : 1M
Sample No. : 1	Standard :
Manufacturer : COLORS	Instrument : HaasSuite(EVERFINE)
Remark :	Test by : LQT

Test Condition

Temperature : 25.3Deg	RH : 65.0%
WL Range : 380nm-780nm	IP : 55750 (85%)
Test Mode : Accuracy Test	T : 1462 ms
Sensitivity : Low	

Spectrum



Colorimetric Parameters

Chromaticity Coordinate: $x = 0.3853$ $y = 0.3730$ / $u' = 0.2299$ $v' = 0.5007$ ($duv = -3.15e-03$)

CCT= 3839K Prcp WL: $L_d = 581.4\text{nm}$ Purity=27.6%

Peak WL: $L_p = 460\text{nm}$ FWHM: =31.4nm Ratio:R=21.0% G=74.2% B=4.9%

Render Index: $R_a = 94.0$ TM30:Rf=89 Rg=98

R1 =97 R2 =98 R3 =97 R4 =91 R5 =94 R6 =95 R7 =91

R8 =89 R9 =83 R10=98 R11=92 R12=73 R13=99 R14=99 R15=96

LEVEL:OUT WHITE:ANSI_4000K

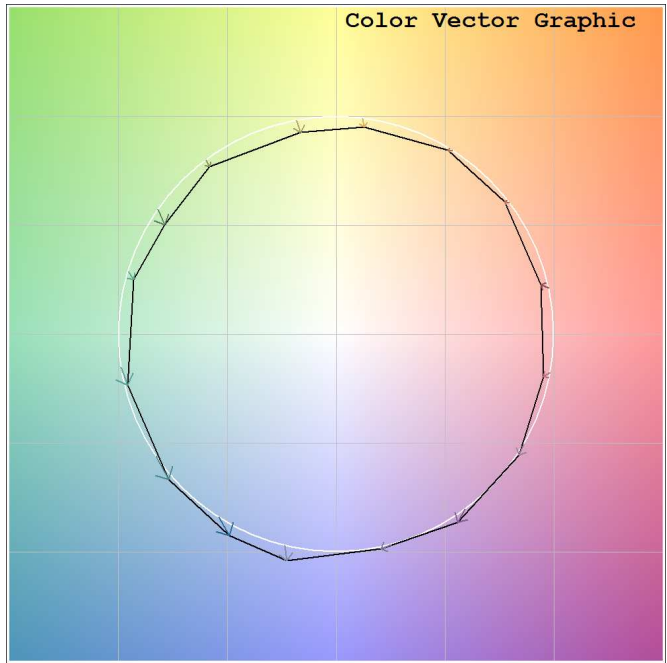
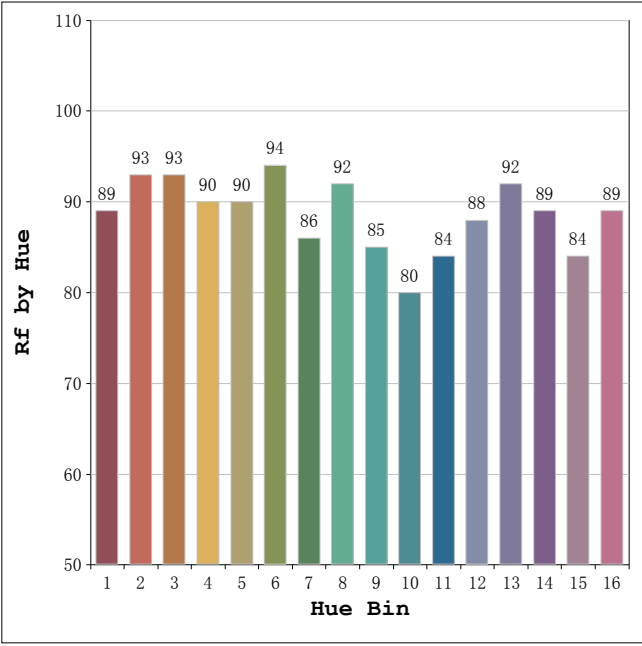
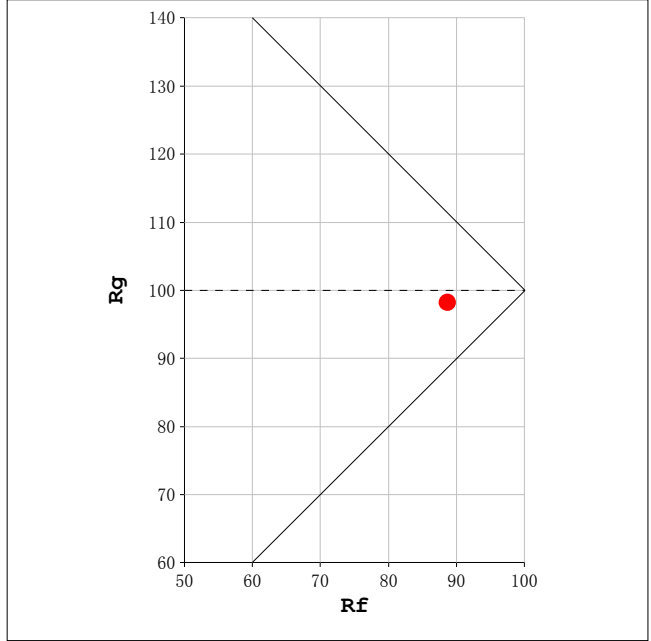
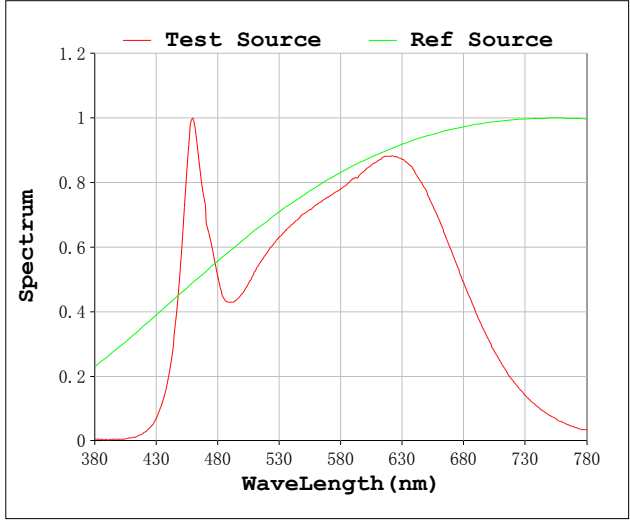
Photometric & Radiometric Parameters

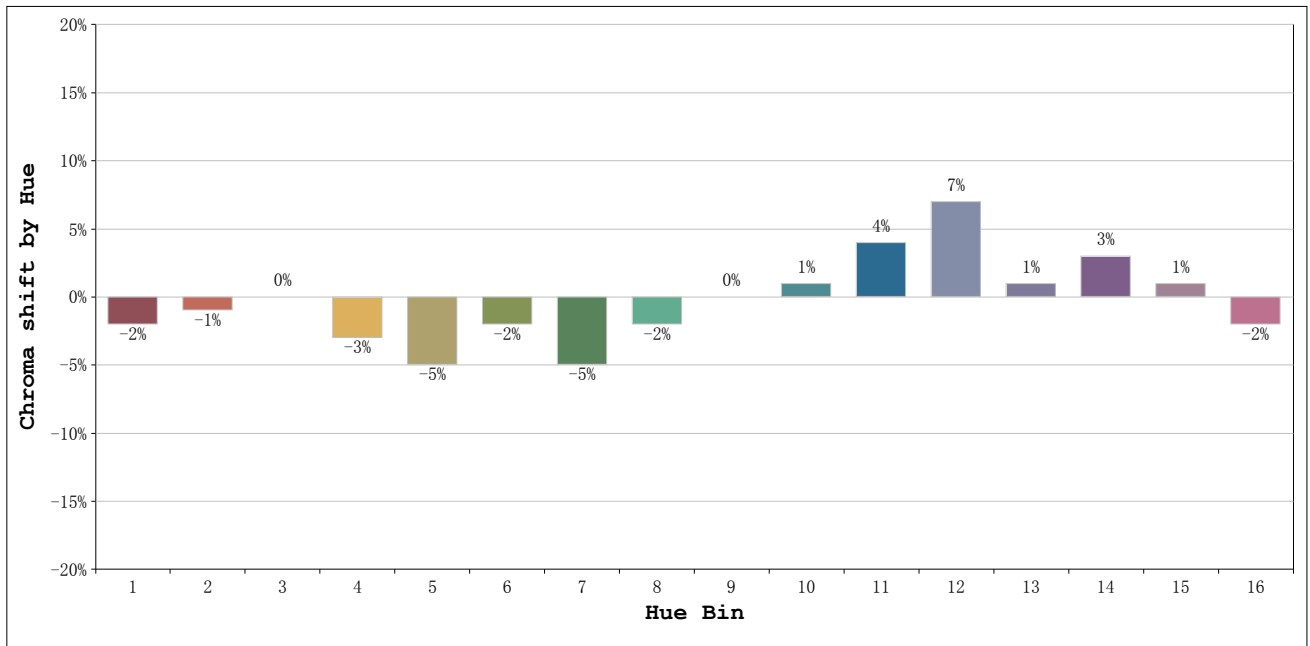
Flux = 1519.7 lm Eff. : 101.31 lm/W Fe = 5.4396 W

Electrical parameters

V = 24.00 V I = 0.6250 A P = 15.00 W PF = 1.000

Rf: 89 CCT: 3839 K u': 0.2299
 Rg: 98 Duv: -0.0031 v': 0.5007





Hue Bin	Hue Angle	Rf	Graphic shift(%)	
			Chroma	Hue
1	0.0° - 22.5°	89	-2	2
2	22.5° - 45.0°	93	-1	2
3	45.0° - 67.5°	93	0	2
4	67.5° - 90.0°	90	-3	0
5	90.0° - 112.5°	90	-5	0
6	112.5° - 135.0°	94	-2	0
7	135.0° - 157.5°	86	-5	4
8	157.5° - 180.0°	92	-2	3
9	180.0° - 202.5°	85	0	9
10	202.5° - 225.0°	80	1	12
11	225.0° - 247.5°	84	4	9
12	247.5° - 270.0°	88	7	2
13	270.0° - 292.5°	92	1	-4
14	292.5° - 315.0°	89	3	-5
15	315.0° - 337.5°	84	1	-4
16	337.5° - 360.0°	89	-2	-1