

Specification

D560RGLWW-24V-12mm



▼General description

- Five in one bulb design, more uniform light
- 65536 colors can be achieved at the highest level
- High quality FPC, high thermal 3M adhesive
- Ta: -25~40°C; Tc: 75°C (max)



▼Dimension

※Max.length: 5000mm

Cutting unit: 6leds/100mm

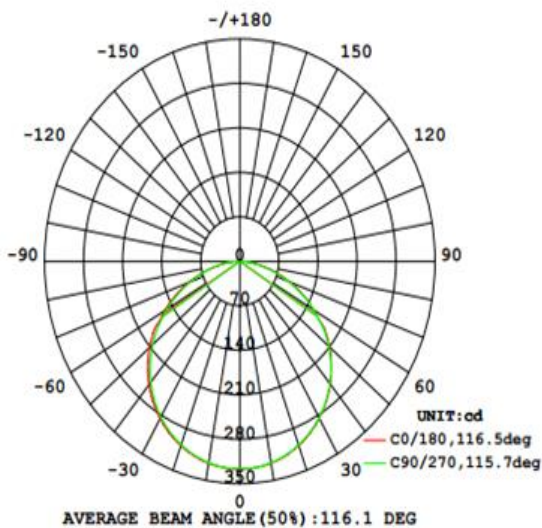
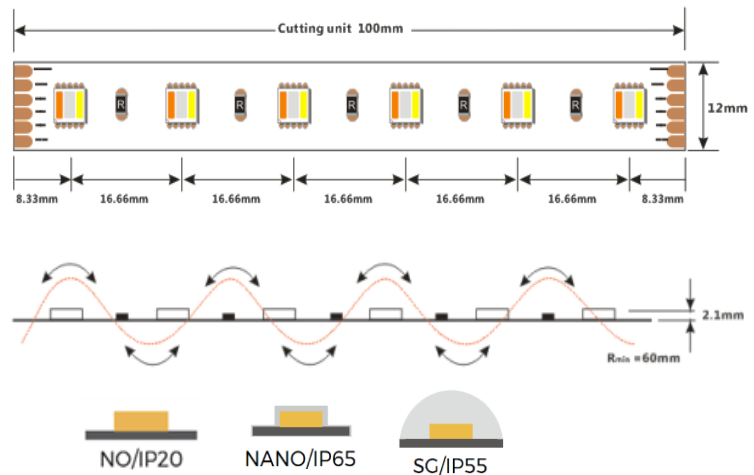
LED pitch: 16.66mm

Min. bend diameter: Φ 60mm

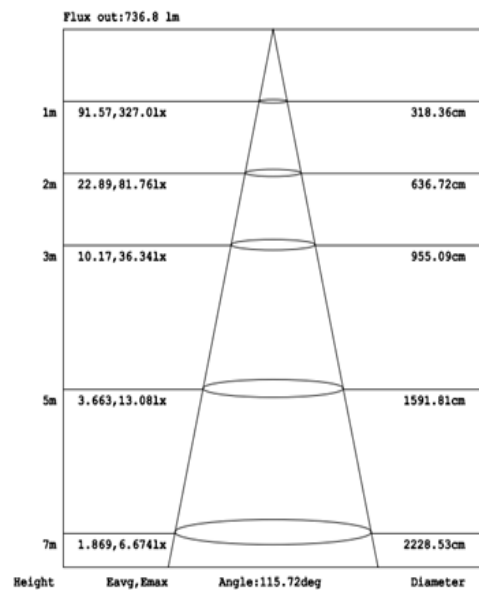
Mounting: 3M tape

IP: IP20//IP55/IP65

※Warranty: 3years



Photometric of 1M strip



AAI Figure

※Max.length data is based on 10% voltage drop

※Warranty is based on indoor use

▼Electronic & output data

Input voltage: DC24V

Rated current: 0.75A(1m) /3.14A(5m)

Typical Powe: 18W(1m) /75.4W(5m)

CRI: >0

Max.power: 20W

On-off times: 10000 (test times)

Power range: 16~20W

Copper foil: 2oz

CRI	Color	Wavelength	Lumen(lm)	lm/W	Energy efficiency class
/	LW	2300K	312	/	/
/	W	6000K	390	/	/
0	Red	625	108	/	/
0	Green	525	246	/	/
0	Blue	470	66	/	/
0	RGBLWW	/	1100	/	/

1.The tolerance of output data can be vary up to 15%

2.the output data tested according to IES TM-30-15



3.the output data is based on IP20/1merter, data of 5m in only for reference

4.IP protection process leads changes to size, CCT and luminous flux

▼IP Process

IP Process	Picture	description	Size	optional CCT/color for finished product	lumen output rate
NO		No proof	12mm*2.1mm	RGBLWW	100%
NA		Nano-proof	12mm*2.1mm	RGBLWW	98%
SG		Gel coating	12mm*2.8mm	RGBLWW	90%

▼Accessories Information

Name	Picture	Code	description
Fixed Clip		94-02-00-0019	Fixed clip, transparent, 3*8mm self-tapping screws, suitable for 12mm FPC,NO/NA LED strip
RGBLWW set		23-01-00-0029 (remote control) 23-01-00-0028 (controller)	FUT089+LS2 Input voltage: DC12-24V Maximum loaded current: 3A*5H Maximum loaded power: 180W (12V)/360W (24V)

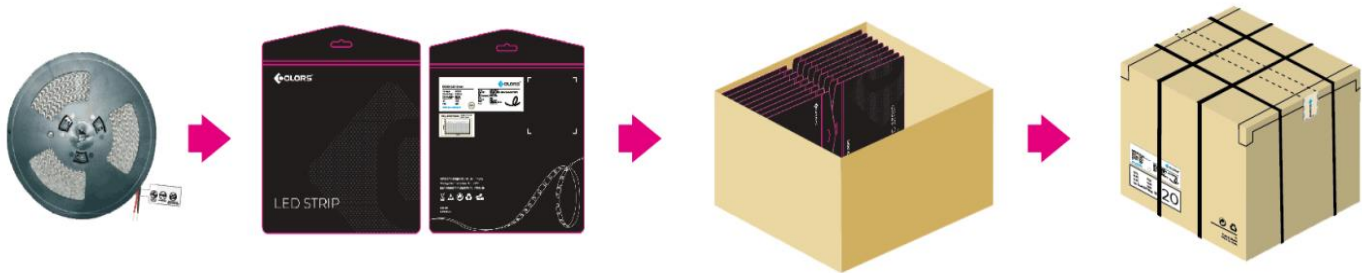
▼ Order Code Formats

1: Category		2: LED		3: LED/m		4: Voltage		5:FPC Width		6: IP Process		7: CRI		8: CCT	
D	-	5	5050	60	60 LED	24	24V	12	12mm	NO	NO	0	0	RGBLW	RGBLW
										NA	NANO				
										SG	Gel coating				
D	-	5		60		24		12		NO		0		RGBLWW	
9: Silk Printing		10: Entry cable		11: Wire type		2: Wire length		13: Tape type		14: Label Type		15: Strip Length			
N	Neutral	S	Single	A	red and black cable	012	12cm	W	White 3M	C	COLORS	0500	5m		
C	COLORS	D	Double	B	SM-male wire	020	20cm	Y	Yellow 3M	S	Customized				
S	Customized	X	Nothing	C	SM-female wire	050	50cm	R	Red tape						
				X	Nothing	100	100cm	X	Nothing						
						0	Nothing								
N		S		A		012		W		C		0500			

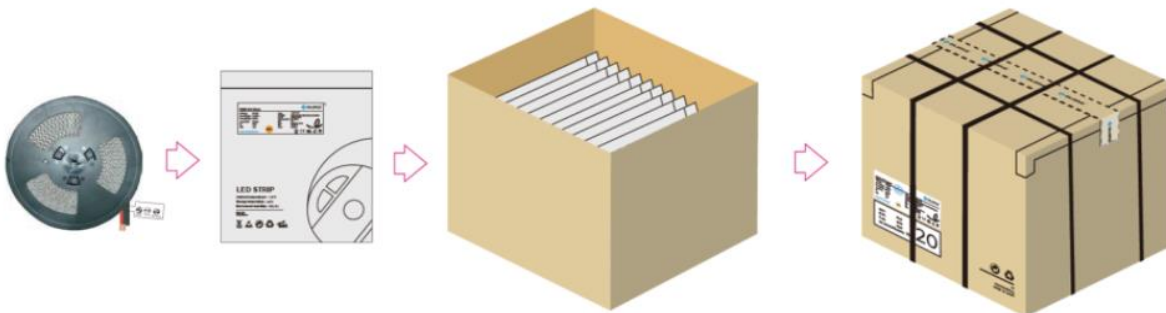
D5602412NO-ORGBLWWNSA012WC0500

▼ Packing

Colors brand package



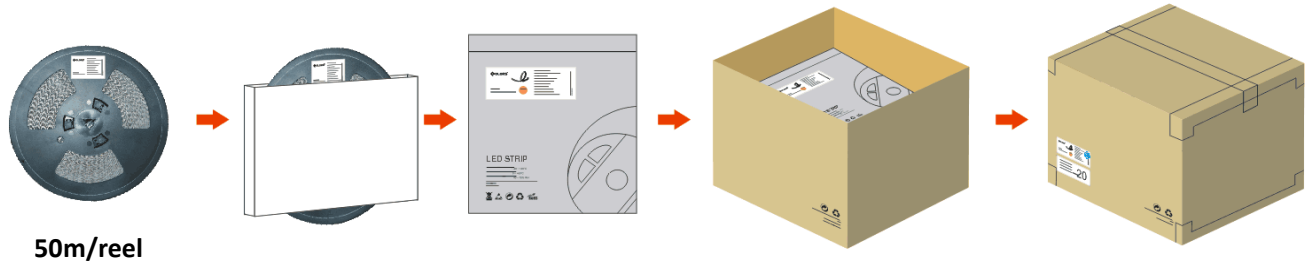
General customized package



IP Process	Product size(mm)	Product quantity (m/reel)	Product quantity (m/case)	Product net weight(kg)	Net weight per box (kg)	Gross weight (kg)	Package size (cm)
NO	5000*12*2.1	5	250	0.15	7.5	8.625	41*41*26
NA	5000*12*2.1	5	250	0.153	7.65	8.7975	41*41*26
SG	5000*12*2.1	5	250	0.251	12.55	14.433	41*41*26

Remark: data with 10% tolerance

Engineering packaging of NO(IP20)/NA(IP65).



IP Process	Product size(mm)	Product quantity (m/reel)	Product quantity (m/case)	Product net weight(kg)	Net weight per box (kg)	Gross weight (kg)	Package size (cm)
NO	50000*12*2.1	50	500	1.5	15	17.25	41*41*26
NA	50000*12*2.1	50	500	1.53	15.3	17.593	41*41*26

Remark: data with 10% tolerance

▼Precautions

- ※ Please drive the led strip with 24VDC isolated power, and the ripple of the constant voltage source should be less than 5%.
- ※ Please do not bend the strip into an arc with a diameter less than 60mm to ensure the longevity and reliability.
- ※ Do not fold it in case any damage of LED beads.
- ※ Do not pull the power wire hard to ensure the longevity. Any Crash may damage the LED light is prohibited.
- ※ Please make sure the wire is connected to the anode and cathode correctly. The power output should be consistent with the voltage of the strip to avoid damage.
- ※ LED lights should be stored in dry, sealed environment. Please only unpack it before usage. Ambient temperature: -25°C~40°C.Storage temperature: 0°C~60°C.Please use the strips without waterproof within indoor environment with humidity less than 70%.
- ※ Please be careful during operation. Do not touch the AC power supply in case of electric shock.
- ※ Please leave at least 20% power for the power supply during using to ensure there is enough power supply to drive the product.
- ※ Do not use any acid or alkaline adhesives to fix the product (e.g.: glass cement).