

BDD-V24-065S

Data Sheet

2018.06 V1.1

Contents

1. Features.....	1
2. Technical Data.....	2
3. Test Data.....	3
4. Instructions.....	4
5. Precautions.....	5
6. Contact.....	6

Features

BDD-V24-065S is a 65W constant voltage dimmable driver with wide input voltage, suit for DALI control mode

- Accuracy of output voltage less than 3%
- Linear driver, size: 346X30X23.5mm
- wide input voltage , 100-277VAC
- up to 90% power supply efficiency
- Built-in PFC function, power factor > 0.95
- Short circuit/ open load/ Over load/ over current protection
- No flicker, ripple wave & noise less than 0.3%@230V full load
- Total harmonic distortion less than 10%
- Warranty for 5 years
- IP20 for indoor LED luminaire
- CE/CB/SAA certification(ongoing)



Technical Data

<p>AC-L AC-N GND</p> <p>INPUT</p> <p>Input Voltage :100-277VAC Input Frequency:50/60Hz Input Current:0.8A Max Power Factor:>0.9 ta:50°C TC:90°C</p>	<p>www.colorsled.com</p>	<p>Dimmable Constant Voltage LED Driver</p> <p>Model: BDD-V24-065S</p> <p>•TC</p>	<p>Output Power:65W Output :+24V=2.7A</p> <p>Control Mode: DALI Dimming Range:1%-100% Short-Circuit / Over load protection Non Flicker and Auto Recovery Mode</p>	<p>SELV-equivalent Made in China</p> <p>OUTPUT</p> <p>DA1 DA2 LED+ LED-</p>
--	--------------------------	--	---	--

Input

Input voltage	100~277VAC
Input current	0.8A Max
Input frequency	50/60Hz
Power factor	>0.95 (Full load)
Driver efficiency	88% (Full load)
Total harmonic distortion	THD<10% (Full load)
Turn on delay time	<0.5s@230V
Surge current	40A

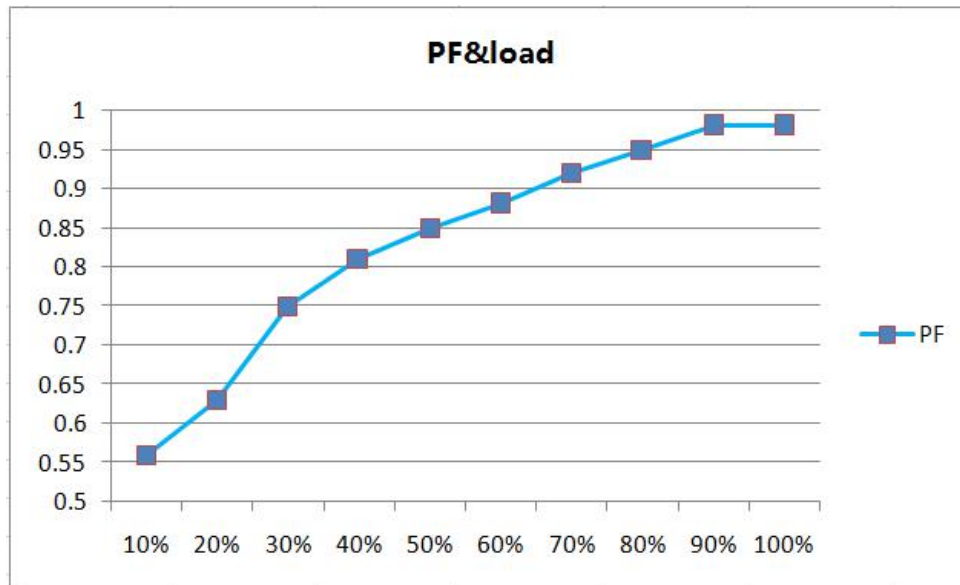
Output

Output voltage	24VDC
Output current	2.7A Max
Power rating	65W Max
Ripple wave & noise	<0.3% (Full load@230V)
Voltage accuracy	±3%

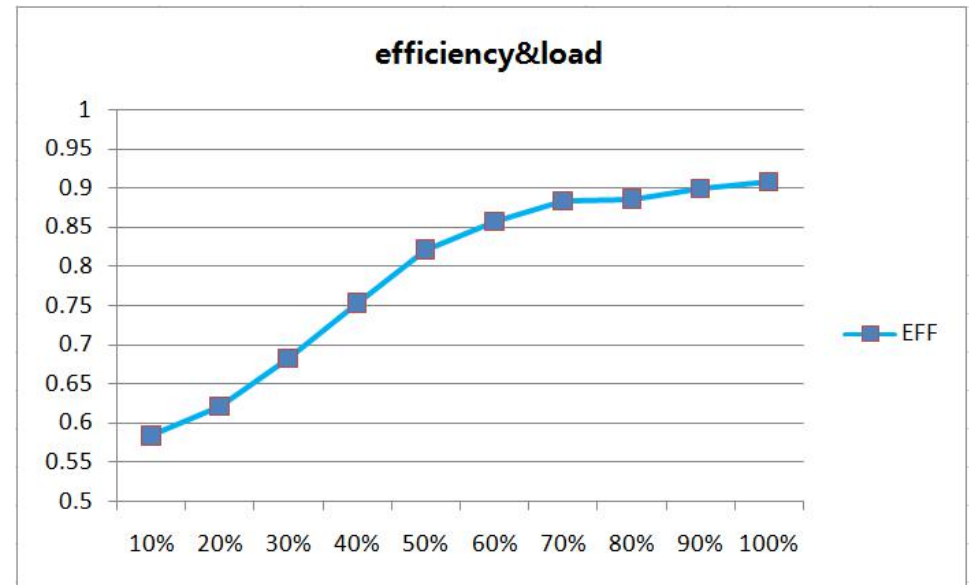
Environment

Ta	-20°C~+55°C
Environment humidity	10%~90%
Storage temperature	-30°C~+70°C
Storage humidity	10%~90%
Application	For indoor use
IP degree	IP20
Size	346*30*23.5mm

Test Data



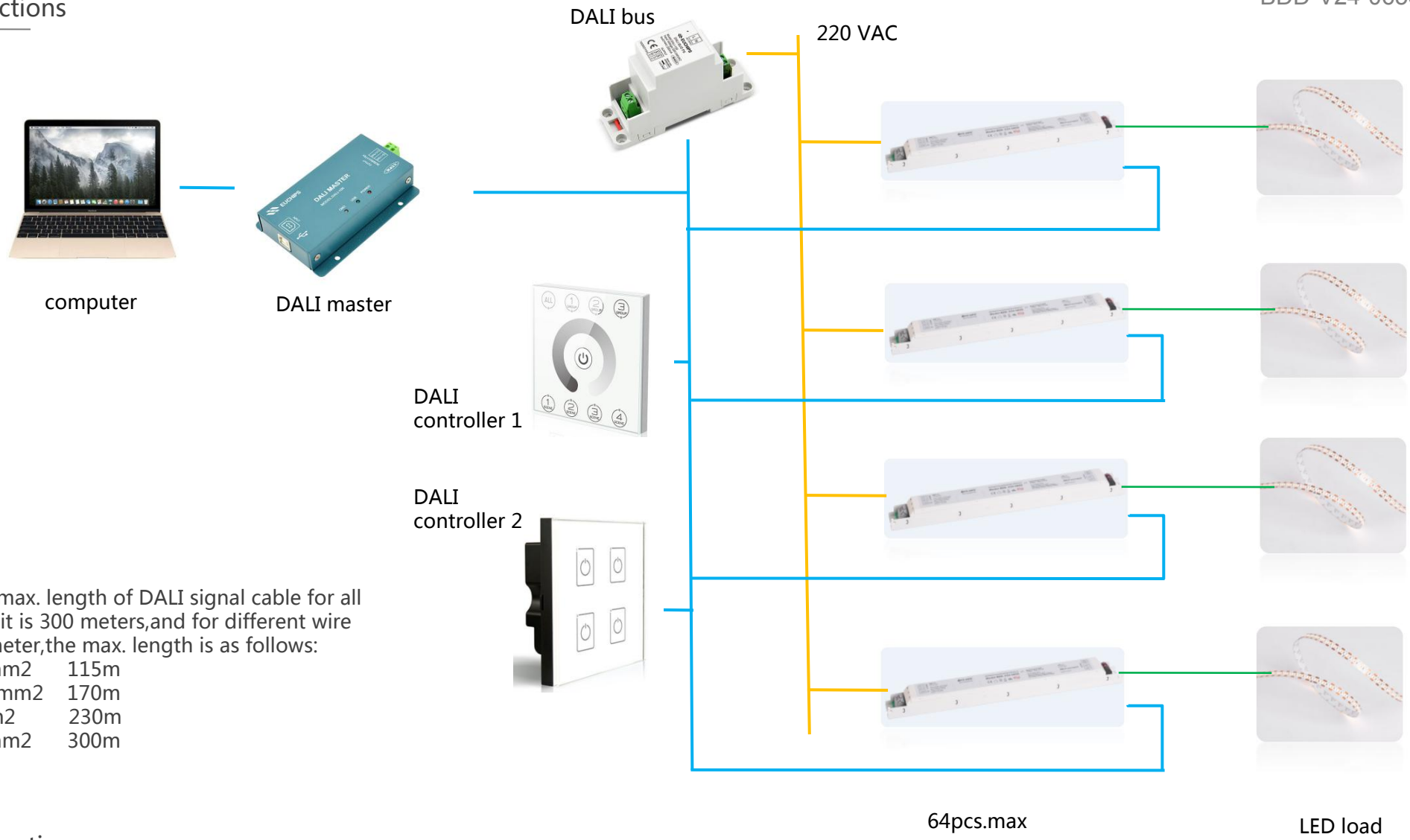
Power factor curve



Efficiency curve

Instructions

BDD-V24-065S



The max. length of DALI signal cable for all circuit is 300 meters, and for different wire diameter, the max. length is as follows:

0.5mm ²	115m
0.75mm ²	170m
1mm ²	230m
1.5mm ²	300m

Protection

Short circuit/ open load/ Over load/ over current protection

Precautions

- Please select the driver that matches the specified load. The output voltage of this product is 24VDC.
 - To prolong the driver life span, please keep 5% load left(It' s recommended to use only 95% of the electricity)
 - Do not use any acid or alkaline adhesive to fix the product.
 - Risk of electric! It must be installed by a recognized electrician,and make sure to cut off the power before installation
 - Please contact us for more information about test reports,rاليability etc.
-